

0CNP2-M85600EN

# Contents

Fig. No.    Fig. Name

## ENGINE RELATE SECTION

1. ENGIN RELATED

## CHASSIS & CRAWLER UNIT

2. CHASSIS

3. CRAWLER

## SNOW REMOVING UNIT

4. SNOW REMOVING FRAM & CHUTE

5. GEAR CASE & AUGER

12. SNOW REMOVING FRAM & CHUTE (ADDNL.ITEM)

## BODY SECTION

6. HYDRAULIC PIPING

7. COVERS

8. PANEL & HANDLE

9. CONTROL LEVER

## LABELS & ACCESSORIES SECTION

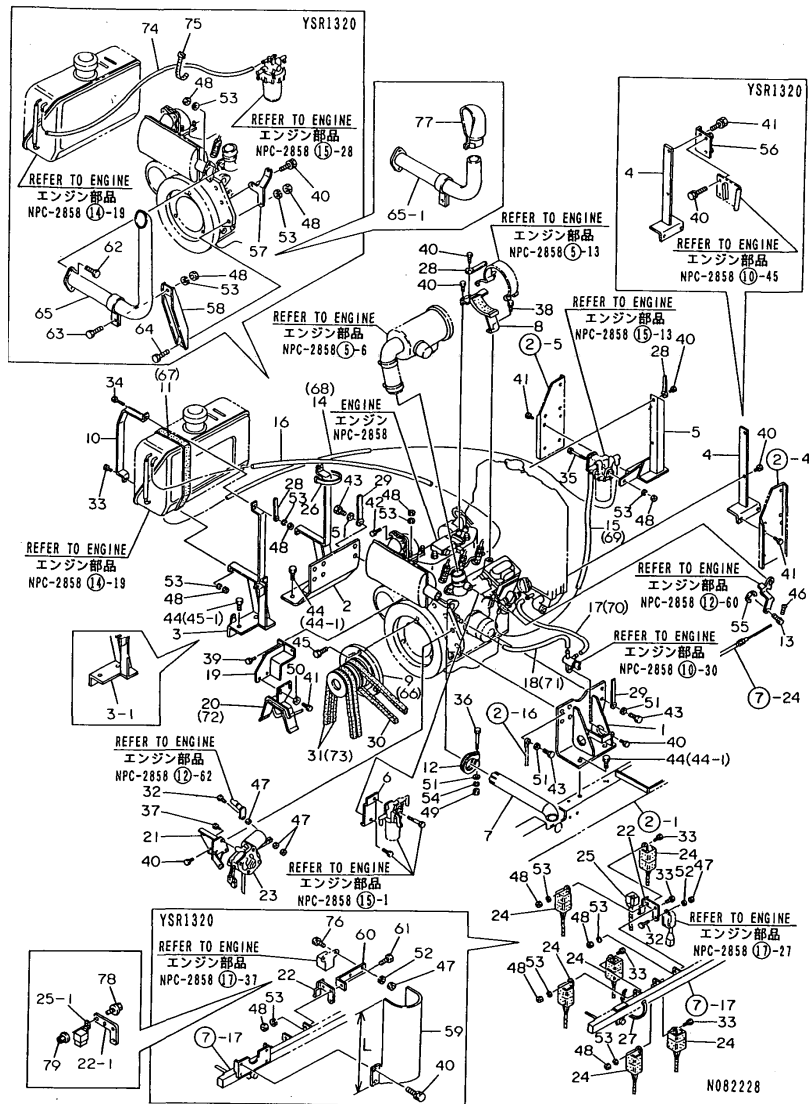
10. LABELS & ACCESSORIES

11. LABEL (SAFETY (ADDNL.ITEM))

Fig. No.    Fig. Name

Fig.1. ENGINE RELATED

1. ENGINE RELATED



Remarks  
 (1) THERE IS IN ENGEN UNIT GROUP NO. 12, REF.NO.109 FOR MODEL YSR1320.  
 (2) REF.NOS.59.65 ARE A SET AND INTER-CHANGEABLE WITH A SET OF 59-1, 65-1 AND 77.  
 L=310MM(REF.NO.59),160MM(REF.NO. 59-1)

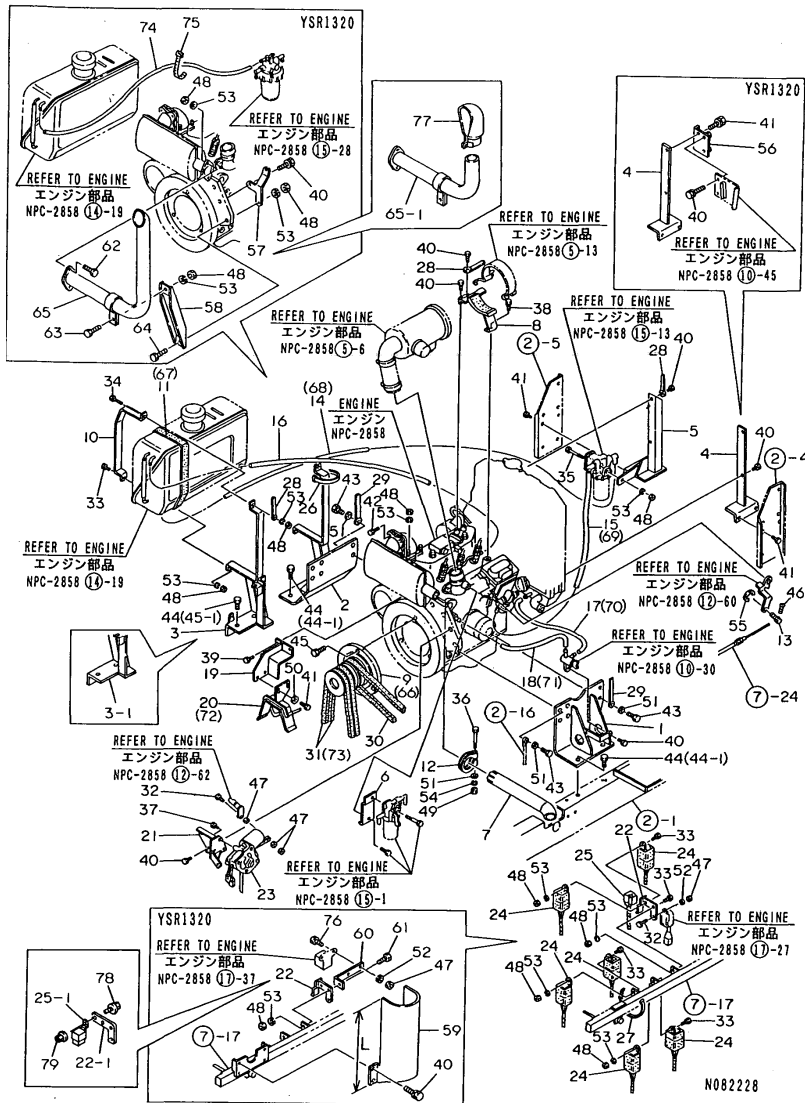
(A)=YSR1310HE  
 (B)=YSR1320  
 (C)=

(D)=  
 (E)=  
 (F)=

No.	Lev.	Parts No.	Description	Qty						I	R
				(A)	(B)	(C)	(D)	(E)	(F)		
1	1	1N3150-21000	BASE (L)ASSY, ENGINE	1	1						
2	1	1N3150-22000	BASE (R)ASSY, ENGINE	1	1						
3	1	1N3150-23000	SUPPORT COMPL.,TANK	1							
3-1	1	1N3150-23001 (A=F305281)	SUPPORT COMPL.,TANK	1	1						S
4	1	1N3150-24000	STAY L CMP.,RADIATOR	1	1						
5	1	1N3150-25000	STAY R CMP.,RADIATOR	1	1						
6	1	1N3150-26000 (B=F801771)	BRACKET CMP,STRAINER	1	1						Z
7	1	1N1830-26000	PIPE COMPL.,EXHAUST	1							
8	1	1N1830-27001	SUPPORT,AIR CLEANER	1	1						
9	1	1N3150-29010	PULLEY	1							
10	1	1N1830-29021	TANK BAND	2	2						
11	1	1N1600-70600	PACKING,FELT	2							
12	1	1N1630-29041	CLAMP,EXH.PIPE	1							
13	1	1N1830-39010	STOPPER,WIRE	1	1						
14	1	1N3150-39010	HOSE 600,FUEL	1							
15	1	1N3150-39020	HOSE 850,FUEL	1							
16	1	1N3150-39030	HOSE 250,FUEL	1							
17	1	1N3150-39040	HOSE 310,COOL.WATER	1							
18	1	1N3150-39050	HOSE 270,COOL.WATER	1							
19	1	1N3156-53000	BRACKET CMP,BELT STP	1	1						
20	1	1N3156-56000	STOPPER CMP,ENG.BELT	1							
21	1	1N3158-11000	BRACKET CMP,STP.MOTR	1							
22	1	1N3158-12000	BRACKET COMP,RELAY	1	1						
22-1	1	1N3158-19020 (B=F603197)	BRACKET,RELAY		1						S
23	1	1N1838-41000	CLAMP,EXH.PIPE	1							1
24	1	1N1938-74000	RELAY A	6	6						
25	1	1N1938-75000	RELAY B	1	1						
25-1	1	1N3248-45000 (B=F603197)	RELAY,NO.		1						R
26	1	1N1600-77210	TIE RF140,REPEAT	1	1						
27	1	1N1600-74330	TIE RF250,REPEAT	1	1						
28	1	1N1600-75120	CLAMP 8X80,CORD	3	3						
29	1	1N1600-75140	CLAMP 10X110,CORD	2	2						
30	1	1N1600-77450	BELT LB29,ORANGE	1	1						
31	1	1N1600-77530	V-BELT JBX43	2							
32	1	26117-060202	BOLT M 6X 20	2	1						
32-1	1	26106-060202 (B=F603197)	BOLT, M6X 20 PLATED		1						R
33	1	26117-080202	BOLT M 8X 20 PLATED	6	5						
33-1	1	26106-080202 (B=F603197)	BOLT, M8X 20 PLATED		5						R
34	1	1N1600-74910	BOLT 8X40	2	2						
34-1	1	26116-080404 (B=F603197)	BOLT, M8X 40 PLATED		2						R
35	1	1N1600-74450	BOLT M 8X 70	1	1						
35-1	1	26106-080702 (B=F603197)	BOLT, M8X 70 PLATED		1						R
36	1	1N1600-74460	BOLT M 10X 65	1							

Fig.1. ENGINE RELATED

1. ENGINE RELATED



Remarks  
 (1) THERE IS IN ENGEN UNIT GROUP NO. 12, REF.NO.109 FOR MODEL YSR1320.  
 (2) REF.NOS.59.65 ARE A SET AND INTER-CHANGEABLE WITH A SET OF 59-1, 65-1 AND 77.  
 L=310MM(REF.NO.59),160MM(REF.NO. 59-1)

(A)=YSR1310HE  
 (B)=YSR1320  
 (C)=

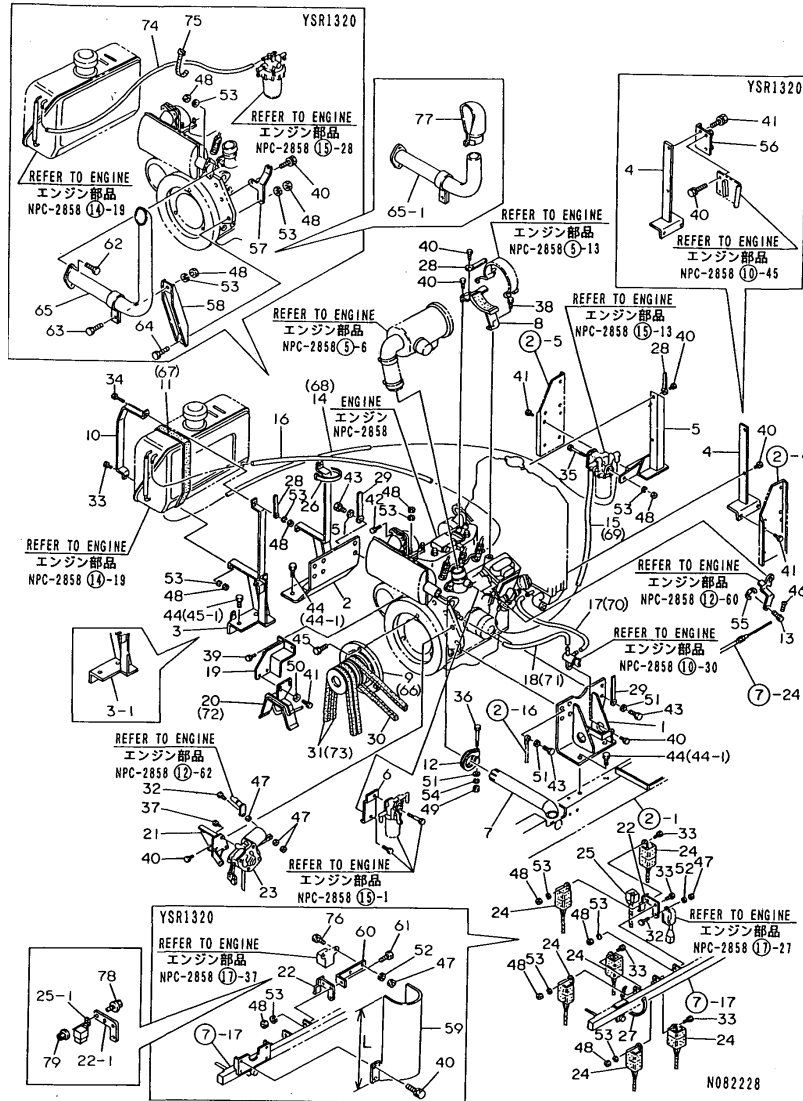
(D)=  
 (E)=  
 (F)=

No.	Lev.	Parts No.	Description	Q'ty						I	R
				(A)	(B)	(C)	(D)	(E)	(F)		
37	1	1N1600-74470	BOLT 5X15 W/SP.WSHR.	3							
38	1	26013-060164	BOLT M 6X 16	1	1						
38-1	1	26106-060122	BOLT, M6X 12 PLATED		1						R
		(B=F603197)									
39	1	26013-060202	BOLT, M6X 20	2	2						
39-1	1	26106-060162	BOLT, M6X 16 PLATED		2						R
		(B=F603197)									
40	1	26013-080164	BOLT M 8X 16	9	13						
40-1	1	26106-080162	BOLT, M8X 16 PLATED		13						R
		(B=F603197)									
41	1	26013-080204	BOLT M 8X 20	6	7						
41-1	1	26106-080202	BOLT, M8X 20 PLATED		7						R
		(B=F603197)									
42	1	1N1600-74750	BOLT 8X25 W/SP.WSHR.	4	4						
42-1	1	26106-080252	BOLT, M8X 25 PLATED		4						R
		(B=F603197)									
42-2	1	26106-080202	BOLT, M8X 20 PLATED		4						R
		(B=F603197)									
43	1	26013-100252	BOLT, M10X 25	12	12						
44	1	1N1600-74430	BOLT 12X25 W/SP.WSHR	6							
44-1	1	1N1600-74430	BOLT 12X25 W/SP.WSHR	4	4						K
		(A=F305281)									
45	1	1N1600-74760	BOLT 12X30 W/SP.WSHR	3							
45-1	1	1N1600-74760	BOLT 12X30 W/SP.WSHR	5	5						K
		(A=F305281)									
46	1	26557-040122	SCREW, M4X12	1	1						
47	1	26707-060002	NUT, M6	4	3						
47-1	1	26367-060002	NUT, M6		3						R
		(B=F603197)									
48	1	26717-080002	NUT, M8	13	17						
48-1	1	26367-080002	NUT, M8		17						R
		(B=F603197)									
49	1	26717-100002	NUT, M10	1							
50	1	22137-080000	WASHER, 8	2	2						Z
		(B=F603197)									
51	1	22137-100000	WASHER, 10	13	12						
52	1	22217-060000	WASHER, SPRING 6	1	3						Z
		(B=F603197)									
53	1	22217-080000	WASHER, SPRING 8	13	17						Z
		(B=F603197)									
54	1	22217-100000	WASHER, SPRING 10	1							
55	1	22272-000070	RING, E- 7	1	1						
56	1	1N3150-29000	BRACKET CMP.,RES.TK.		1						
57	1	1N3150-29030	BRACKET,THROTL.WIRE		1						
58	1	1N3150-28000	STAY COMP.,MUFFLER		1						
59	1	1N3150-29020	GUARD CMP.,EXH.PIPE		1						
59-1	1	1N3150-29021	GUARD CMP.,EXH.PIPE		1						F 2
		(B=F603197)									
60	1	1N3158-19010	BRACKET,GLOW TIMER		1						
61	1	26117-080252	BOLT M 8X 25 PLATED		1						
61-1	1	26106-080252	BOLT, M8X 25 PLATED		1						R

Fig.1. ENGINE RELATED

(A)=YSR1310HE  
 (B)=YSR1320  
 (C)=  
 (D)=  
 (E)=  
 (F)=

1. ENGINE RELATED

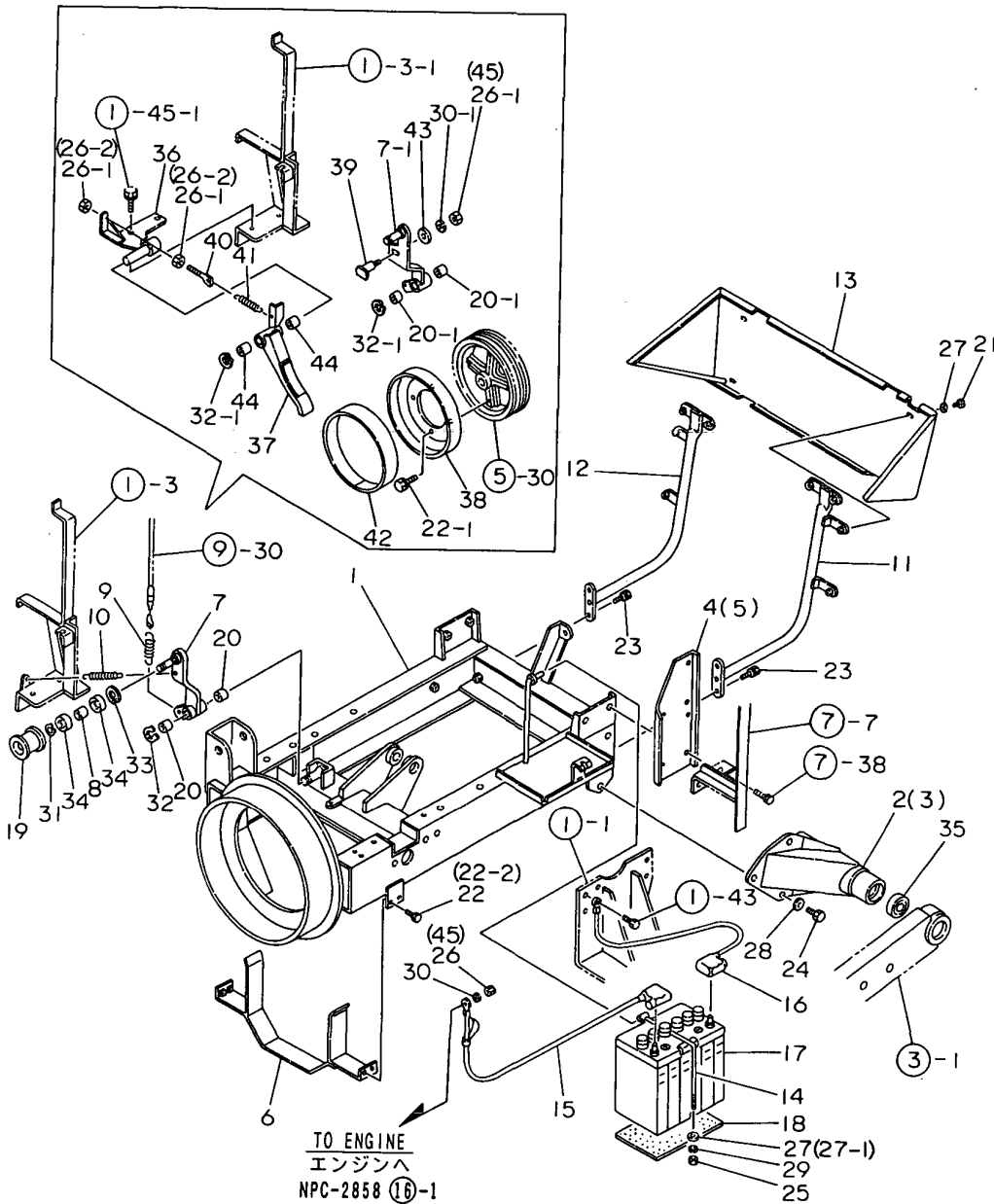


No.	Lev.	Parts No.	Description	(A)	(B)	(C)	Q'ty	(D)	(E)	(F)	I	R
			(B=F603197)									
62	1	26116-080252	BOLT, M8X 25 PLATED		2							
62-1	1	26106-080252	BOLT, M8X 25 PLATED		2							R
			(B=F603197)									
62-2	1	26013-080252	BOLT, M8X 25		2							R
			(B=F705301)									
63	1	26116-080252	BOLT, M8X 25 PLATED		1							
63-1	1	26106-080252	BOLT, M8X 25 PLATED		1							R
			(B=F603197)									
64	1	26116-080302	BOLT, M8X 30 PLATED		1							
64-1	1	26106-080302	BOLT, M8X 30 PLATED		1							R
			(B=F603197)									
65	1	1N1830-26001	PIPE COMP.,EXHAUST		1							
65-1	1	1N3150-31000	PIPE COMP.,EXHAUST		1							F 2
			(B=F603197)									
66	1	1N3150-29011	M6R005100 Y QZ		1							
67	1	1N3150-29040	M2D007500 Y QZ		2							
68	1	1N1600-78380	HOSE 7.5X600,BRAIDED		1							
69	1	1N1600-78400	HOSE 7.5X850,BRAIDED		1							
70	1	1N1600-78410	HOSE 7.5X310,BRAIDED		1							
70-1	1	1N1600-81710			1							R
			(B=F603197)									
71	1	1N1600-78420	HOSE 7.5X270,BRAIDED		1							
71-1	1	1N1600-81720			1							R
			(B=F603197)									
72	1	1N3156-56001	STOPPER CMP,ENG.BELT		1							
73	1	1N1600-78430	BELT RCLB43		2							
74	1	1N1600-78700	HOSE 7.5X1400,BRAID.		1							
75	1	1N1600-77210	TIE RF140,REPEAT		1							
76	1	26117-060162	BOLT M 6X 16 PLATED		2							
76-1	1	26106-060162	BOLT, M6X 16 PLATED		2							R
			(B=F603197)									
77	1	1N3240-34000	CAP COMPL.,MUFFLER		1							W 2
			(B=F603197)									
78	1	26106-060162	BOLT, M6X 16 PLATED		1							W
			(B=F603197)									
79	1	26367-060002	NUT, M6		1							W
			(B=F603197)									

Remarks  
 (1) THERE IS IN ENGEN UNIT GROUP NO. 12, REF.NO.109 FOR MODEL YSR1320.  
 (2) REF.NOS.59.65 ARE A SET AND INTER-CHANGEABLE WITH A SET OF 59-1, 65-1 AND 77.  
 L=310MM(REF.NO.59),160MM(REF.NO. 59-1)

Fig.2. CHASSIS

2. CHASSIS



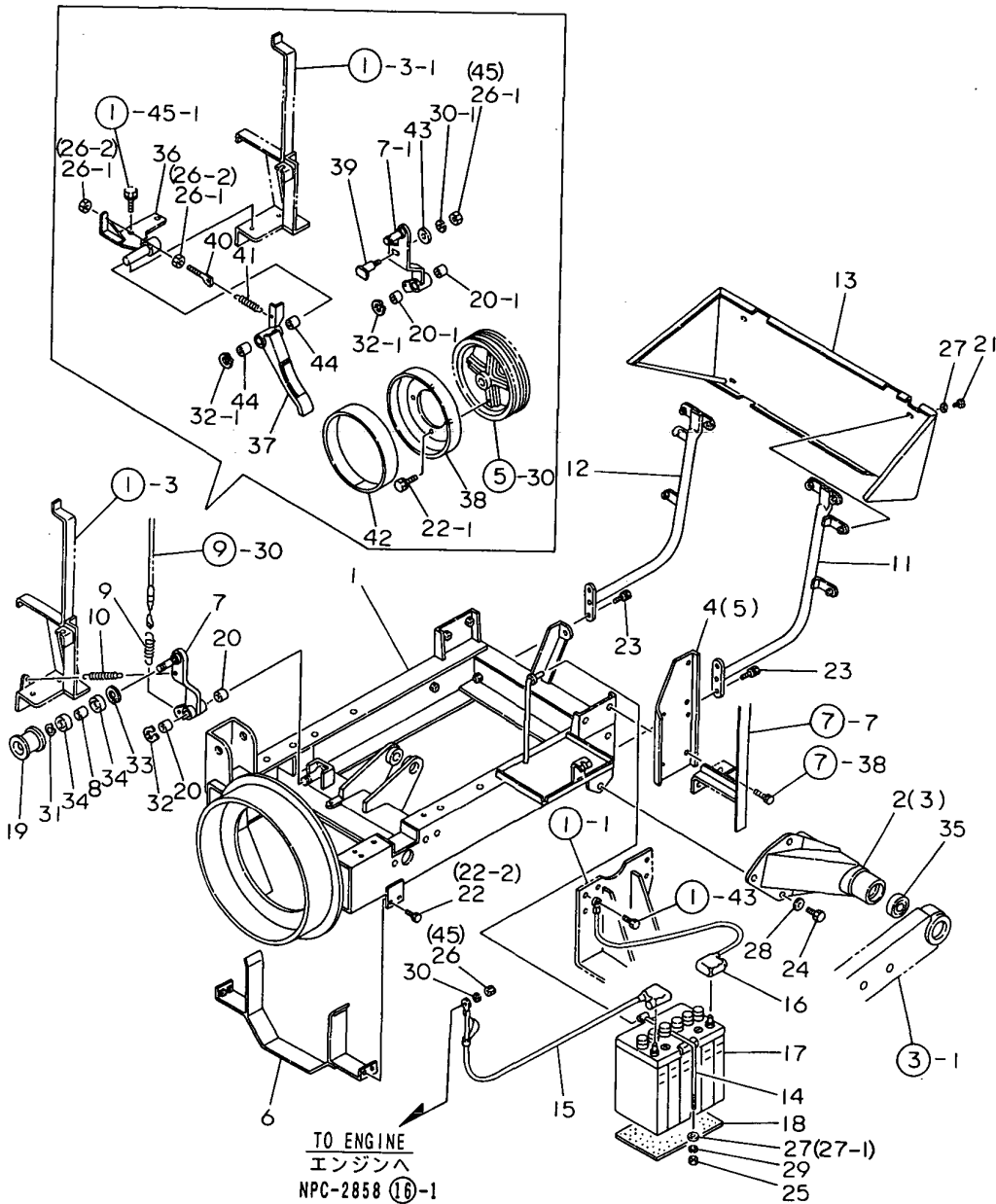
(A)=YSR1310HE  
(B)=YSR1320  
(C)=

(D)=  
(E)=  
(F)=

No.	Lev.	Parts No.	Description	Qty						I	R
				(A)	(B)	(C)	(D)	(E)	(F)		
1	1	1N3154-11000	FRAME COMPL.,BODY	1	1						
2	1	1N3154-12000	SUPPORT L COMP.,AXLE	1	1						
3	1	1N3154-13000	SUPPORT ASSY	1	1						
4	1	1N3154-19010	BRACKET L,PANEL	1	1						
5	1	1N3154-19020	BRACKET R,PANEL	1	1						
6	1	1N3156-54000	STOPPER CMP,BLW.BELT	1	1						
7	1	1N3156-61000	ARM CMP,TENS.CLUTCH	1							
7-1	1	1N3156-63000 (A=F402221)	ARM COMP.,AGR.CLUTCH	1	1						S
8	1	1N1600-71270	COLLAR 17X20	1	1						
9	1	1N1639-19190	SPRING,TENSN CLUTCH	1							
9-1	1	1N1889-19010 (A=F305281)	SPRING,TENS.CLUTCH	1	1						N
10	1	1N1600-70310 (A=F305281)	SPRING,TENSIONER	1							Z
11	1	1N3157-22000	STAY L COMP.,PANEL	1	1						
12	1	1N3157-23000	STAY R COMP.,PANEL	1	1						
13	1	1N3157-83000	COVER CMP,PANEL REAR	1	1						
14	1	1N3158-61000	CLAMP COMP,BATTERY	1	1						
15	1	1N3158-71000	CORD,BATTERY POS.	1	1						
16	1	1N3158-72000	CORD,BATTERY EARTH	1	1						
17	1	1N1600-70510	BATTERY NT60-S4	1	1						
17-1	1	1N1600-80670 (B=F603197)		1							R
18	1	1N3158-99010	RUBBER, ANTI VIBRAT.	1	1						
19	1	1N1600-77660	PULLEY 45-2,TENSION	1	1						
20	1	1N1600-75280	LINER ML2015	2							
20-1	1	1N1600-78440 (A=F305281)	BUSH BM2015FB	2	2						R
21	1	26013-060164	BOLT M 6X 16	4	4						
21-1	1	26106-060162 (B=F603197)	BOLT, M6X 16 PLATED		4						R
22	1	26013-080204	BOLT M 8X 20	4							
22-1	1	26013-080204 (A=F305281)	BOLT M 8X 20	8	8						K
22-2	1	26106-080202 (B=F603197)	BOLT, M8X 20 PLATED		4						R
23	1	26013-100204	BOLT M10X 20	4	4						
23-1	1	26013-100202 (B=F603197)	BOLT, M10X 20		4						R
24	1	26013-100252 (B=F603197)	BOLT, M10X 25	6	6						
25	1	26707-060002	NUT, M6	1	2						
26	1	26607-080002	NUT, M8	1							
26-1	1	26717-080002 (A=F305281)	NUT, M8	4	4						K
26-2	1	26717-080002 (B=F603197)	NUT, M8		2						K
27	1	22137-060000	WASHER, 6	5	5						
27-1	1	22137-060000 (B=F603197)	WASHER, 6		1						K
28	1	1N1600-74540	WASHER 10X25X3.2,RD.	6	6						

Fig.2. CHASSIS

2. CHASSIS



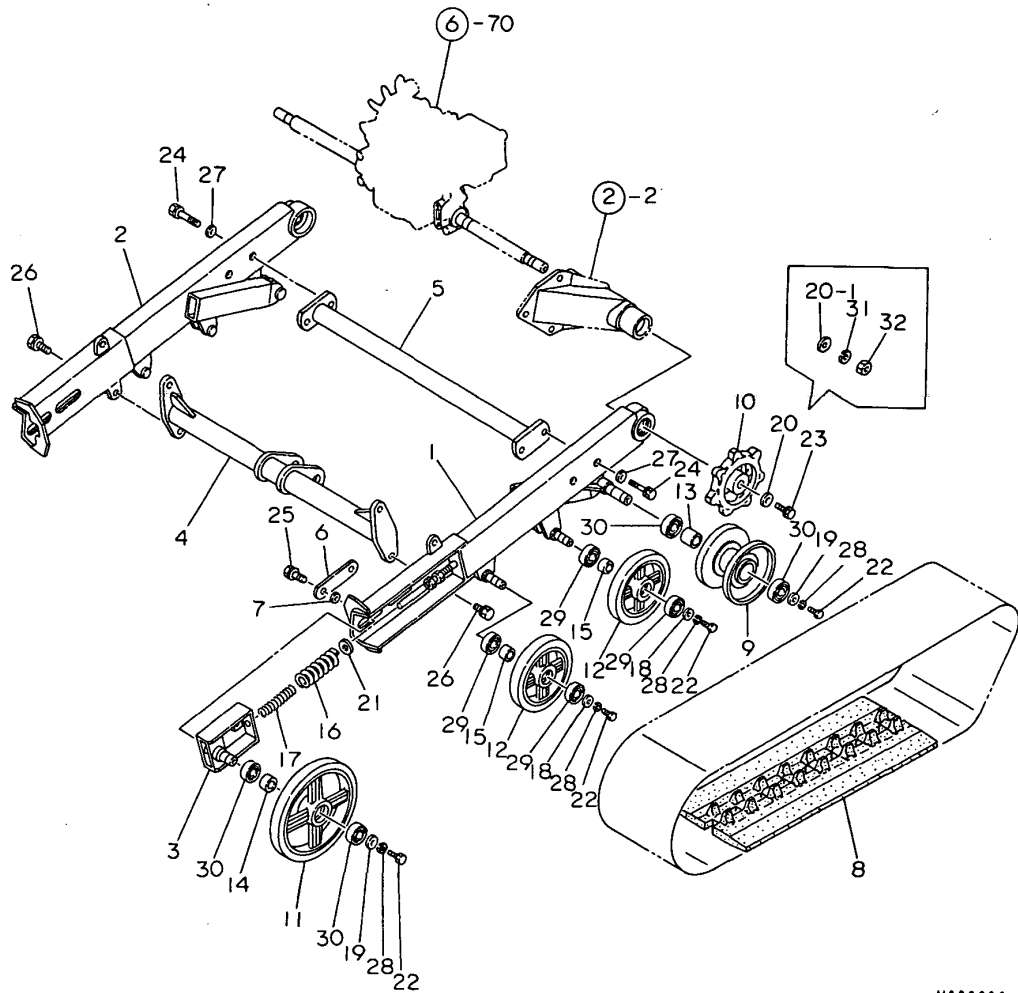
(A)=YSR1310HE  
(B)=YSR1320  
(C)=

(D)=  
(E)=  
(F)=

No.	Lev.	Parts No.	Description	Qty						I	R
				(A)	(B)	(C)	(D)	(E)	(F)		
28-1	1	1N1600-74890 (B=F603197)	WASHER 10X35X4.5,RD.		6						R
29	1	22217-060000	WASHER, SPRING 6		1						
30	1	22217-080000	WASHER, SPRING 8		1						
30-1	1	22217-080000 (A=F305281)	WASHER, SPRING 8	2	2						K
30-2	1	22217-080000 (B=F603197)	WASHER, SPRING 8		2						Z
31	1	22242-000170	RING, 17	1	1						
32	1	22242-000200	RING, 20		1						
32-1	1	22242-000200 (A=F305281)	RING, 20	2	2						K
33	1	22252-000350	RING, 35		1	1					
34	1	24104-060034	BEARING, BALL 6003UU	2	2						
35	1	1N1600-75540	BALL BEARING	2	2						
36	1	1N3156-11000 (A=F305281)	BRACKET COMP.,BRAKE	1	1						W
37	1	1N3156-58000 (A=F305281)	BRAKE COMP.,BLOWER	1	1						W
38	1	1N3156-59020 (A=F305281)	BRAKE DRUM		1						W
38-1	1	1N3106-59010 (A=F402221)	BRAKE DRUM	1	1						R
38-2	1	1N3106-59010 (B=F603197)	BRAKE DRUM		1						Z
39	1	1N3166-57000 (A=F305281)	SHAFT COMP.,INTERLOC	1	1						W
40	1	1N1636-59010 (A=F305281)	SCREW,TENSION ADJUST	1	1						W
41	1	1N1619-16010 (A=F305281)	SPRING, TENSION	1	1						W
42	1	1N3156-59030 (A=F305281)	SPONGE 40X600		1						W
42-1	1	1N3156-59030 (A=F402221)	SPONGE 40X600	2	2						K
42-2	1	1N3156-59030 (B=F603197)	SPONGE 40X600		2						Z
43	1	1N1600-74250 (A=F305281)	WASHER 8X20X3.2,RD.	1	1						W
43-1	1	1N1600-74250 (B=F603197)	WASHER 8X20X3.2,RD.		1						Z
44	1	1N1600-78370 (A=F305281)	BUSH BM2020FB	2	2						W
45	1	26367-080002 (B=F603197)	NUT, M8		2						W

Fig.3. CRAWLER

3. CRAWLER



N082230

(A)=YSR1310HE  
(B)=YSR1320  
(C)=

(D)=  
(E)=  
(F)=

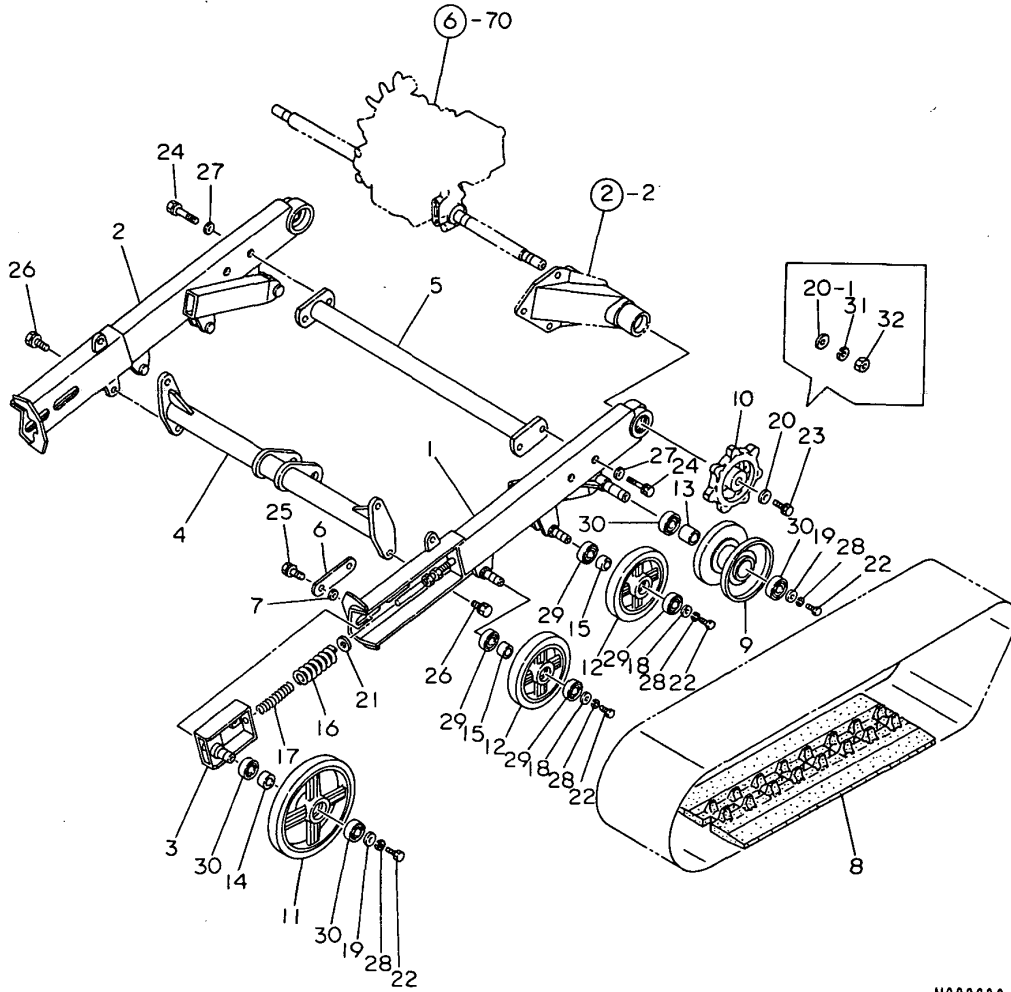
No.	Lev.	Parts No.	Description	Qty						I	R
				(A)	(B)	(C)	(D)	(E)	(F)		
1	1	1N3152-11000	FRAME L CMP.,CRAWLER	1	1						
2	1	1N3152-12000	FRAME R CMP.,CRAWLER	1	1						
3	1	1N1632-13001	BEAM,CRAWLER TENSION	2	2						
3-1	1	1N1672-14000 (B=F705301)	BEAM,CRAWLER TENSION		2						R
4	1	1N3152-13000	BRIDGE COMP.,FRONT	1	1						
5	1	1N1632-15000	BRIDGE,REAR	1	1						
6	1	1N1632-19010	WASHER,TENSION BEAM	2	2						
7	1	1N1632-19020	COLLAR	4	4						
8	1	1N1600-77540	CRAWLER 230X72X35,RB	2	2						
9	1	1N1672-61000	WHEEL,REAR	2	2						
10	1	1N3152-69010	SPROCKET,DRIVE	2	2						
11	1	1N1632-69020	WHEEL,FRONT	2	2						
12	1	1N1600-70040	RING,INDUCTION	4	4						
13	1	1N1610-70010	COLLAR 25X36	2	2						
14	1	1N1639-19020	COLLAR 25X16	2	2						
15	1	1N1639-19040	COLLAR 20X16	4	4						
16	1	1N1639-16010	SPRING 6.5X31	2							
16-1	1	1N1679-16010 (A=F402221)	SPRING 31X110,COILED	2	2						N
17	1	1N1639-16020	SPRING 4X18	2	2						
17-1	1	1N1679-16020 (B=F705301)	SPRING 19X110,COILED		2						R
18	1	1N1600-74540	WASHER 10X25X3.2,RD.	4	4						
19	1	1N1600-77280	WASHER 10X30X3.2,RD.	4	4						
19-1	1	1N1600-74890 (B=F603197)	WASHER 10X35X4.5,RD.		4						R
20	1	1N1600-77290	WASHER 10X30X4.5,CIR.	2							
20-1	1	1N1600-78300 (A=F402221)	WASHER 14X40X4.5,RD.	2	2						S
21	1	1N1600-77550	WASHER 12X40X4.5,RD.	2	2						
22	1	26117-100202	BOLT M10X 20 PLATED	8	8						
22-1	1	26116-100202 (B=F603197)	BOLT, M10X 20 PLATED		8						R
23	1	26013-100302 (A=F402221)	BOLT, M10X 30	2							Z
24	1	1N1600-74560	BOLT 10X55 W/SP.WSHR	4	4						
24-1	1	26013-100552 (B=F603197)	BOLT, M10X 55		4						R
25	1	26013-120254	BOLT M12X 25	4	4						
25-1	1	26013-120252 (B=F603197)	BOLT, M12X 25		4						R
26	1	1N1600-74430	BOLT 12X25 W/SP.WSHR	4	4						
26-1	1	26013-120252 (B=F603197)	BOLT, M12X 25		4						R
27	1	22137-100000	WASHER, 10	4	4						
28	1	22217-100000	WASHER, SPRING 10	8	8						
29	1	24104-060044	BEARING, BALL 6004UU	8	8						
30	1	24104-060054	BEARING, BALL 6005UU	8	8						
31	1	22217-140000 (A=F402221)	WASHER, SPRING 14	2	2						W

N:Old  $\begin{matrix} \text{Yes} \\ \text{No} \end{matrix}$  New, Q:Old  $\begin{matrix} \text{No} \\ \text{Yes} \end{matrix}$  New, R:Old  $\begin{matrix} \text{Yes} \\ \text{No} \end{matrix}$  New, S:Old  $\begin{matrix} \text{No} \\ \text{Yes} \end{matrix}$  New, W:Add, Z:Discontinued, F:Interchangeable by set, K:Qty Change  
 ++ CONTINUE ++  
 Copyright (C) YANMAR CO., LTD. All Rights Reserved.



Fig.3. CRAWLER

3. CRAWLER



N082230

(A)=YSR1310HE  
(B)=YSR1320  
(C)=

(D)=  
(E)=  
(F)=

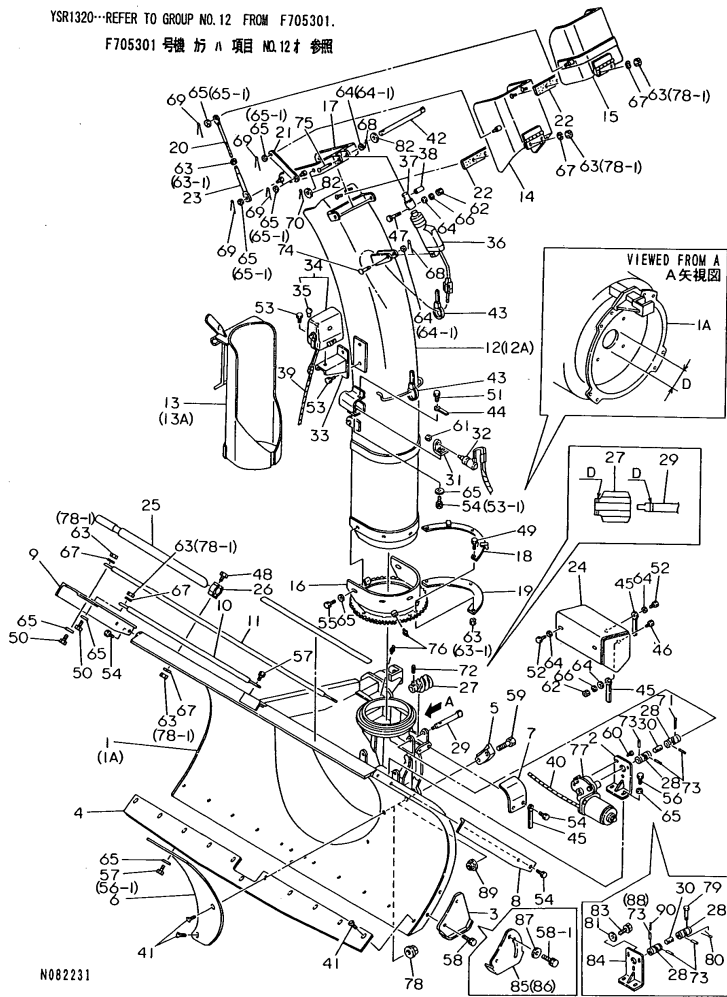
No.	Lev.	Parts No.	Description	Q'ty						I	R
				(A)	(B)	(C)	(D)	(E)	(F)		
32	1	26707-140002 (A=F402221)	NUT, M14	2	2						W

# Fig.4. SNOW REMOVING FRAM & CHUTE

## 4. SNOW REMOVING FRAM & CHUTE

YSR1320--REFER TO GROUP NO.12 FROM F705301.

F705301 号機 方 A 項目 NO.12 参照



N082231

**Remarks**

- (1) REF. NOS.27,29&72 ARE INTER-CHANGEABLE BY SET WITH REF. NOS 27-1,29-1 & 72-1.
- (2) REF. NO.1 & GROUP NO.5 REF.NO. 28 ARE INTERCHANGEABLE BY SET WITH REF. NO.1 & GROUP NO.5 REF. NO.28-1.
- D=74MM FOR REF. NO.1A OR 90MM FOR REF. NO.1A-1.
- (3) D=3MM FOR REF. NOS.27 & 29 OR 4.5MM FOR REF. NOS.27-1 & 29-1.

(A)=YSR1310HE  
(B)=YSR1320  
(C)=

(D)=  
(E)=  
(F)=

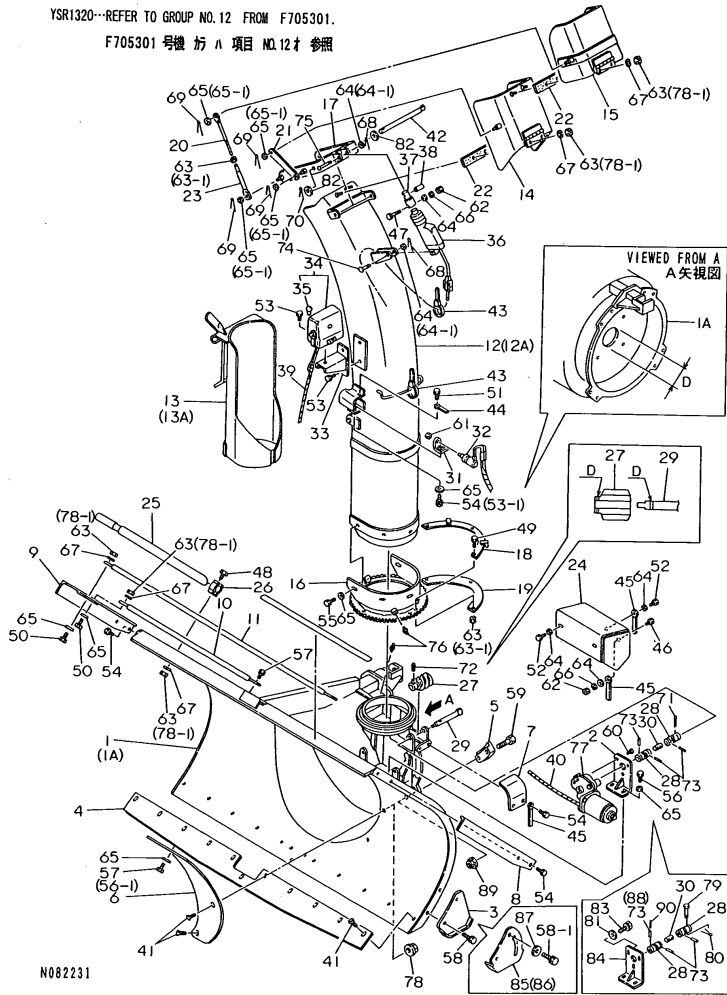
No.	Lev.	Parts No.	Description	Qty						I	R
				(A)	(B)	(C)	(D)	(E)	(F)		
1	1	1N3153-11000	FRAME C	1							
1A	1	7N3153-11000	FRAME C		1						
1A-1	1	7N3153-11001	FRAME C		1						F 2
		(B=F502384)									
1A-2	1	7N3153-11001	FRAME C		1						Z
		(B=F705301)									
2	1	1N1600-77200	BASE COMP.,MOTOR	1							
3	1	1N1630-81000	SLEDGE L	2	2						Z 4
		(B=F603197)									
4	1	1N1953-19010	EDGE	1	1						Z
		(B=F705301)									
5	1	1N3073-19010	GUIDE,ROLLING	4	4						Z
		(B=F705301)									
6	1	1N1953-19020	PLATE,SHIELDING	1	1						Z
		(B=F705301)									
7	1	1N1683-19010	COVER,WORM	1	1						Z
		(B=F705301)									
8	1	1N1673-21000	PLATE L CMP,SNOW CUT	1	1						Z
		(B=F705301)									
9	1	1N1673-22000	PLATE R CMP,SNOW CUT	1	1						Z
		(B=F705301)									
10	1	1N1630-70090	BKR A,SNOW CUTTING	2	2						Z
		(B=F705301)									
11	1	1N1630-70100	BKR B,SNOW CUTTING	1	1						Z
		(B=F705301)									
12	1	1N3073-33001	CHUTE 1200 CMP,MOTOR	1							Z
12A	1	7N3073-33000	CHUTE 1200 CMP,MOTOR		1						Z
		(B=F705301)									
13	1	1N3073-32000	COVER CMP.,CARTRIDGE	1							Z
13A	1	7N3073-32000	COVER CMP.,CARTRIDGE		1						Z
		(B=F705301)									
14	1	1N3073-34000	CAP A COMP.,CHUTE	1	1						Z
		(B=F705301)									
15	1	1N1833-34000	CAP B COMP.,CHUTE	1	1						Z
		(B=F705301)									
16	1	1N3073-35000	BASE COMP.,CHUTE	1	1						Z
		(B=F705301)									
17	1	1N3073-36000	ARM CMP,CHUTE CONTR.	1	1						Z
		(B=F705301)									
18	1	1N1600-77600	STOPPER COMP.,CHUTE	1							
18-1	1	1N3153-39010	STOPPER,CHUTE	1	1						N
		(A=F402221)									
18-2	1	1N3153-39010	STOPPER,CHUTE		1						Z
		(B=F705301)									
19	1	1N1673-39010	CLAMP,CHUTE	2	2						Z
		(B=F705301)									
20	1	1N1763-39010	ROD,ADJUSTING	2	2						Z
		(B=F705301)									
21	1	1N1833-39020	ARM 129,LINK	2	2						Z
		(B=F705301)									
22	1	1N1673-39030	RUBBER,CHUTE	2	2						Z

Fig.4. SNOW REMOVING FRAM & CHUTE

4. SNOW REMOVING FRAM & CHUTE

YSR1320--REFER TO GROUP NO.12 FROM F705301.

F705301 号機 方 A 項目 NO.12 参照



Remarks

- (1) REF. NOS.27,29&72 ARE INTER-CHANGEABLE BY SET WITH REF. NOS 27-1,29-1 & 72-1.
- (2) REF. NO.1 & GROUP NO.5 REF.NO. 28 ARE INTERCHANGEABLE BY SET WITH REF. NO.1 & GROUP NO.5 REF. NO.28-1.
- D=74MM FOR REF. NO.1A OR 90MM FOR REF. NO.1A-1.
- (3) D=3MM FOR REF. NOS.27 & 29 OR 4.5MM FOR REF. NOS.27-1 & 29-1.

(A)=YSR1310HE  
(B)=YSR1320  
(C)=

(D)=  
(E)=  
(F)=

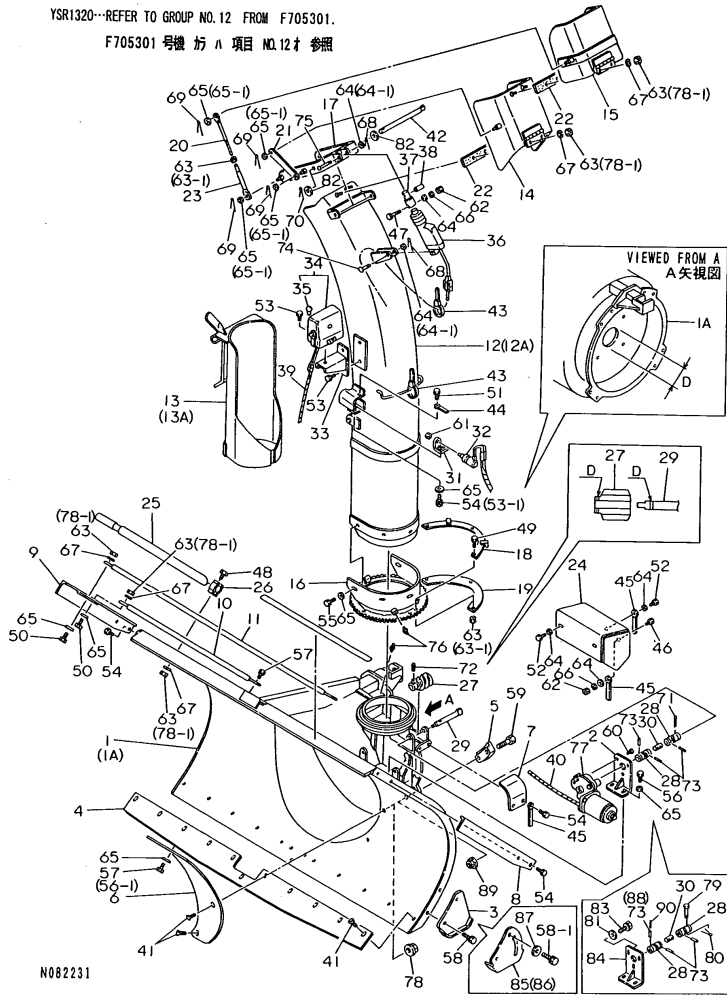
No.	Lev.	Parts No.	Description	Qty						I	R	
				(A)	(B)	(C)	(D)	(E)	(F)			
			(B=F705301)									
23	1	1N1833-39030	ROD 105,CHUTE LINK	2	2							Z
			(B=F705301)									
24	1	1N1600-77610	COVER COMP.,MOTOR	1	1							Z
			(B=F705301)									
25	1	1N1803-99010	ROD,SNOW SHOVELING	1	1							Z
			(B=F705301)									
26	1	1N1803-99020	METAL,LOCK	2	2							Z
			(B=F705301)									
27	1	1N1610-70130	WORM	1								1
27-1	1	1N1610-70131	WORM	1	1							F 3
			(A=F402221)									
27-2	1	1N1610-70131	WORM		1							Z
			(B=F705301)									
28	1	1N1600-77240	JOINT NC-10-RRA-16	2	2							Z
			(B=F705301)									
29	1	1N3157-59010	SHAFT,WORM	1								1
29-1	1	1N3157-59011	SHAFT,WORM	1	1							F 3
			(A=F402221)									
29-2	1	1N3157-59011	SHAFT,WORM		1							Z
			(B=F705301)									
30	1	1N1600-77620	SHAFT,JOINT	1	1							Z
			(B=F705301)									
31	1	1N3078-11000	BRACKET CMP,CHUTE SW	1	1							Z
			(B=F705301)									
32	1	1N1808-31000	SWITCH,GUARD	1	1							Z
			(B=F705301)									
33	1	1N1678-35000	STAY,CHUTE LIGHT	1	1							Z
			(B=F705301)									
34	1	1N1678-36000	HEADLIGHT	1	1							
34-1	1	1N3248-34000	LAMP S,WORKING		1							N
			(B=F603197)									
34-2	1	1N3248-34000	LAMP S,WORKING		1							Z
			(B=F705301)									
35	2	1N1678-36100	BULB 12V-15W	1	1							
35-1	2	1N3248-34200	BULB 12V-23W		1							S
			(B=F603197)									
35-2	2	1N3248-34200	BULB 12V-23W		1							Z
			(B=F705301)									
36	1	1N3078-42000	CYLINDER,MOTOR	1	1							Z
			(B=F705301)									
37	1	1N3078-49010	ADAPTER,CYLINDER	1	1							Z
			(B=F705301)									
38	1	1N3078-49020	BUSH,CYLINDER PIN	1	1							Z
			(B=F705301)									
39	1	1N3158-53001	HARNESS (C), WIRE	1	1							Z
			(B=F705301)									
40	1	1N3158-54000	HARNESS (D), WIRE	1	1							Z
			(B=F705301)									
41	1	1N1600-77630	BOLT 8X15,HEX.SCKT.F	13	13							Z
			(B=F705301)									

# Fig.4. SNOW REMOVING FRAM & CHUTE

## 4. SNOW REMOVING FRAM & CHUTE

YSR1320--REFER TO GROUP NO.12 FROM F705301.

F705301 号機 方 A 項目 NO.12 参照



**Remarks**

- (1) REF. NOS.27,29&72 ARE INTER-CHANGEABLE BY SET WITH REF. NOS 27-1,29-1 & 72-1.
- (2) REF. NO.1 & GROUP NO.5 REF.NO. 28 ARE INTERCHANGEABLE BY SET WITH REF. NO.1 & GROUP NO.5 REF. NO.28-1.
- D=74MM FOR REF. NO.1A OR 90MM FOR REF. NO.1A-1.
- (3) D=3MM FOR REF. NOS.27 & 29 OR 4.5MM FOR REF. NOS.27-1 & 29-1.

(A)=YSR1310HE  
(B)=YSR1320  
(C)=

(D)=  
(E)=  
(F)=

No.	Lev.	Parts No.	Description	Q'ty						I	R
				(A)	(B)	(C)	(D)	(E)	(F)		
42	1	1N1600-77140	PIN 10X185,PRESS (B=F705301)	1	1						Z
43	1	1N1600-77210	TIE RF140,REPEAT (B=F705301)	2	2						Z
44	1	1N1600-75450	CLAMP 6X45,CORD (B=F705301)	1	1						Z
45	1	1N1600-75120	CLAMP 8X80,CORD	3	3						Z
45-1	1	1N1600-75120	CLAMP 8X80,CORD (B=F705301)		3						Z
46	1	26117-060162	BOLT M 6X 16 PLATED	1	1						
46-1	1	26106-060162	BOLT, M6X 16 PLATED (B=F603197)		1						R
46-2	1	26106-060162	BOLT, M6X 16 PLATED (B=F705301)		1						Z
47	1	1N1600-77160	BOLT 6X35	1	1						
47-1	1	26106-060352	BOLT, M6X 35 PLATED (B=F603197)		1						R
47-2	1	26106-060352	BOLT, M6X 35 PLATED (B=F705301)		1						Z
48	1	26117-080162	BOLT M 8X 16 PLATED	2	2						
48-1	1	26116-080162	BOLT, M8X 16 PLATED (B=F603197)		2						R
48-2	1	26116-080162	BOLT, M8X 16 PLATED (B=F705301)		2						Z
49	1	26116-080202	BOLT, M8X 20 PLATED (B=F705301)	6	6						Z
50	1	1N1600-74850	BOLT 8X25	4	4						
50-1	1	26106-080252	BOLT, M8X 25 PLATED (B=F603197)		4						R
50-2	1	26106-080252	BOLT, M8X 25 PLATED (B=F705301)		4						Z
51	1	26013-060124	BOLT, M6X 12	1	1						
51-1	1	26106-060122	BOLT, M6X 12 PLATED (B=F603197)		1						R
51-2	1	26106-060122	BOLT, M6X 12 PLATED (B=F705301)		1						Z
52	1	26013-060164	BOLT M 6X 16	3	3						
52-1	1	26106-060162	BOLT, M6X 16 PLATED (B=F603197)		3						R
52-2	1	26106-060162	BOLT, M6X 16 PLATED (B=F705301)		3						Z
53	1	26013-080124	BOLT M 8X 12	3	3						
53-1	1	26106-080122	BOLT, M8X 12 PLATED (B=F603197)		4						R
53-2	1	26106-080122	BOLT, M8X 12 PLATED (B=F705301)		4						Z
54	1	26013-080164	BOLT M 8X 16	7	7						
54-1	1	26106-080162	BOLT, M8X 16 PLATED (B=F603197)		6						R
54-2	1	26106-080162	BOLT, M8X 16 PLATED (B=F705301)		6						Z

# Fig.4. SNOW REMOVING FRAM & CHUTE

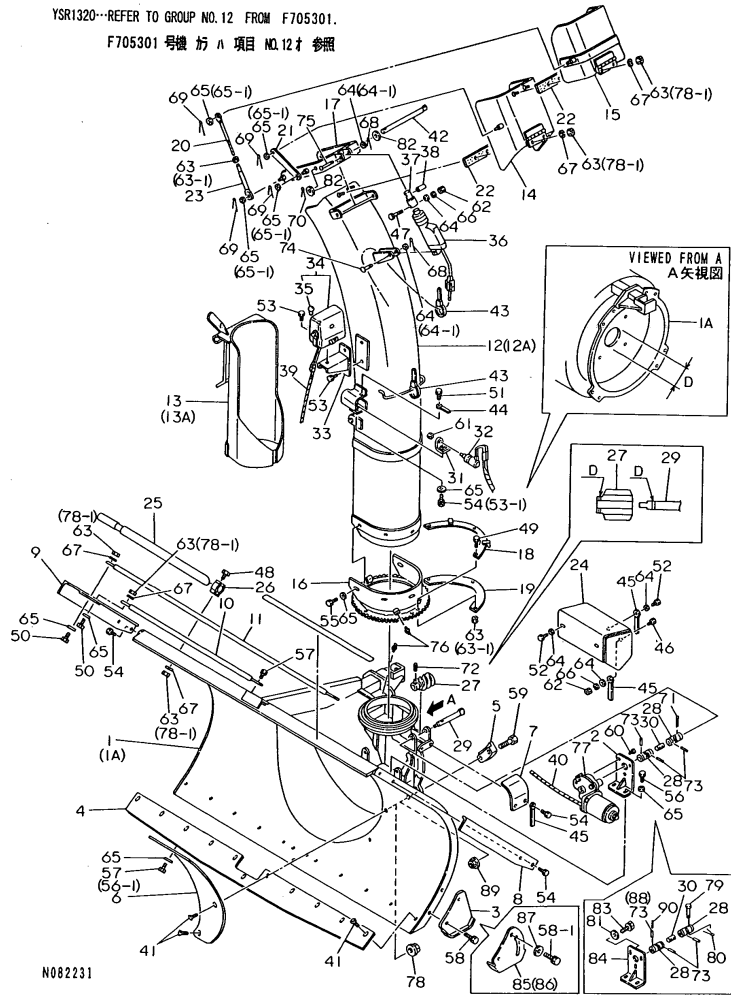
(A)=YSR1310HE  
(B)=YSR1320  
(C)=

(D)=  
(E)=  
(F)=

## 4. SNOW REMOVING FRAM & CHUTE

YSR1320--REFER TO GROUP NO.12 FROM F705301.

F705301 号機 方 A 項目 NO.12 参照



No.	Lev.	Parts No.	Description	Q'ty						I	R
				(A)	(B)	(C)	(D)	(E)	(F)		
55	1	26013-080182	BOLT, M8X 18	5	5						
55-1	1	26106-080122	BOLT, M8X 12 PLATED (B=F603197)		5						R
55-2	1	26106-080122	BOLT, M8X 12 PLATED (B=F705301)		5						Z
56	1	26013-080204	BOLT M 8X 20	2	2						
56-1	1	26106-080202	BOLT, M8X 20 PLATED (B=F603197)		3						R
56-2	1	26106-080202	BOLT, M8X 20 PLATED (B=F705301)		3						Z
57	1	1N1600-74610	BOLT 8X25	3	3						
57-1	1	26106-080252	BOLT, M8X 25 PLATED (B=F603197)		2						R
57-2	1	26106-080252	BOLT, M8X 25 PLATED (B=F705301)		2						Z
58	1	26013-100254	BOLT, M10X 25	4	4						
58-1	1	26013-100252	BOLT, M10X 25 (B=F603197)		4						R
58-2	1	26013-100252	BOLT, M10X 25 (B=F705301)		4						Z
59	1	1N1600-74620	BOLT 12X45 W/SP.WSHR	8	8						
59-1	1	26136-120452	BOLT, M12X 45 PLATED (B=F603197)		8						S
59-2	1	26136-120452	BOLT, M12X 45 PLATED (B=F705301)		8						Z
60	1	26022-050162	SCREW, M5X16	3							
61	1	1N1600-74840	NUT	1	1						
61-1	1	26737-120002	NUT, M12 (B=F603197)		1						R
61-2	1	26737-120002	NUT, M12 (B=F705301)		1						Z
62	1	26707-060002	NUT, M6	2	2						
62-1	1	26367-060002	NUT, M6 (B=F603197)		2						R
62-2	1	26367-060002	NUT, M6 (B=F705301)		2						Z
63	1	26717-080002	NUT, M8	18	18						
63-1	1	26717-080002	NUT, M8 (B=F603197)		8						K
63-2	1	26717-080002	NUT, M8 (B=F705301)		8						Z
64	1	22137-060000	WASHER, 6	7	7						
64-1	1	22137-060000	WASHER, 6 (B=F603197)		2						K
64-2	1	22137-060000	WASHER, 6 (B=F705301)		2						Z
65	1	22137-080000	WASHER, 8	21	21						
65-1	1	22137-080000	WASHER, 8 (B=F603197)		8						K
65-2	1	22137-080000	WASHER, 8 (B=F705301)		8						Z

**Remarks**

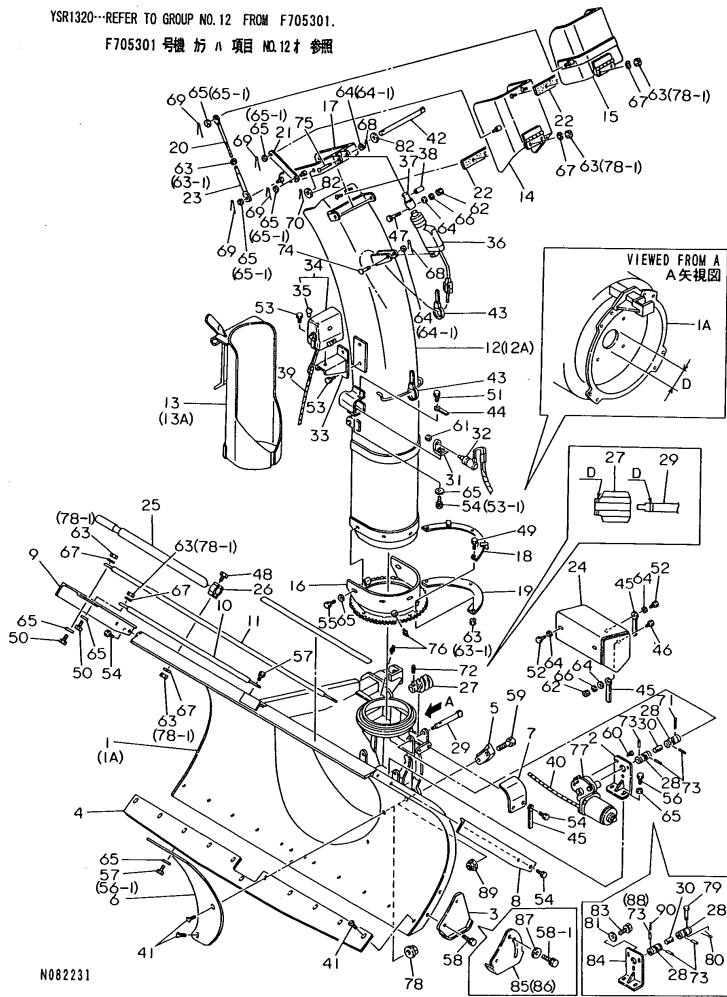
- (1) REF. NOS.27,29&72 ARE INTER-CHANGEABLE BY SET WITH REF. NOS 27-1,29-1 & 72-1.
- (2) REF. NO.1 & GROUP NO.5 REF.NO. 28 ARE INTERCHANGEABLE BY SET WITH REF. NO.1 & GROUP NO.5 REF. NO.28-1.
- D=74MM FOR REF. NO.1A OR 90MM FOR REF. NO.1A-1.
- (3) D=3MM FOR REF. NOS.27 & 29 OR 4.5MM FOR REF. NOS.27-1 & 29-1.

Fig.4. SNOW REMOVING FRAM & CHUTE

4. SNOW REMOVING FRAM & CHUTE

YSR1320--REFER TO GROUP NO.12 FROM F705301.

F705301 号機 方 A 項目 NO.12 参照



Remarks

- (1) REF. NOS.27,29&72 ARE INTER-CHANGEABLE BY SET WITH REF. NOS 27-1,29-1 & 72-1.
- (2) REF. NO.1 & GROUP NO.5 REF.NO. 28 ARE INTERCHANGEABLE BY SET WITH REF. NO.1 & GROUP NO.5 REF. NO.28-1.
- D=74MM FOR REF. NO.1A OR 90MM FOR REF. NO.1A-1.
- (3) D=3MM FOR REF. NOS.27 & 29 OR 4.5MM FOR REF. NOS.27-1 & 29-1.

(A)=YSR1310HE  
(B)=YSR1320  
(C)=

(D)=  
(E)=  
(F)=

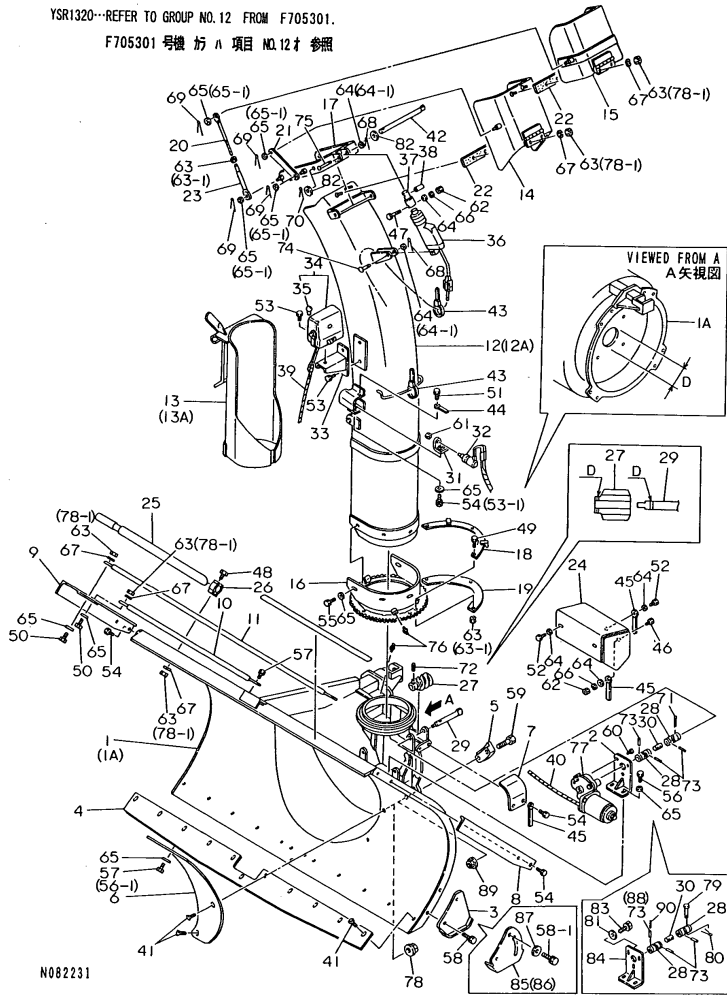
No.	Lev.	Parts No.	Description	Q'ty						I	R
				(A)	(B)	(C)	(D)	(E)	(F)		
66	1	22217-060000 (B=F603197)	WASHER, SPRING 6	2	2						Z
67	1	22217-080000 (B=F603197)	WASHER, SPRING 8	10	10						Z
68	1	22417-200160 (B=F705301)	PIN, COTTER 2.0X16	2	2						Z
69	1	22417-250160 (B=F705301)	PIN, COTTER 2.5X16	8	8						Z
70	1	1N1600-72160 (B=F705301)	PIN 3X20,COTTER	1	1						Z
71	1	22417-400320 (A=F201746)	PIN, COTTER 4.0X32	1							Z
72	1	22351-030025	PIN, SPRING 3.0X25	1							F
72-1	1	22351-045025 (A=F402221)	PIN, SPRING 4.5X25	1	1						F
72-2	1	22351-045025 (B=F705301)	PIN, SPRING 4.5X25		1						Z
73	1	1N1600-71590	PIN 4.5X20,SPRING	3	3						
73-1	1	1N1600-71590 (B=F603197)	PIN 4.5X20,SPRING		2						K
73-2	1	1N1600-71590 (B=F705301)	PIN 4.5X20,SPRING		2						Z
74	1	1N1600-77170 (B=F705301)	PIN 6X35,ROUND HEAD	1	1						Z
75	1	1N1600-77180 (B=F705301)	PIN 6X50,ROUND HEAD	1	1						Z
76	1	1N1600-75150 (B=F705301)	NIPPLE A-MT6X1,GRS.	4	4						Z
77	1	1N1600-77150 (B=F705301)	MOTOR	1	1						Z
78	1	26366-080002 (A=F305281)	NUT, M8	3	3						W
78-1	1	26367-080002 (B=F603197)	NUT, M8		13						K
78-2	1	26367-080002 (B=F705301)	NUT, M8		13						Z
79	1	1N3077-69150 (A=F201746)	PIN 4.3X25	1	1						W
79-1	1	1N3077-69150 (B=F705301)	PIN 4.3X25		1						Z
80	1	22417-160100 (A=F201746)	COTTER PIN	1	1						W
80-1	1	22417-160100 (B=F705301)	COTTER PIN		1						Z
81	1	22137-050000 (B=F705301)	WASHER, 5		3						Z
82	1	22137-100000 (B=F705301)	WASHER, 10	1	2						Z
83	1	26013-050164	BRACKET COMPL.,WIRE		3						
83-1	1	26013-050162 (B=F603197)	BOLT, M5X 16		3						R

Fig.4. SNOW REMOVING FRAM & CHUTE

4. SNOW REMOVING FRAM & CHUTE

YSR1320--REFER TO GROUP NO.12 FROM F705301.

F705301 号機 方 A 項目 NO.12 参照



N082231

(A)=YSR1310HE  
(B)=YSR1320  
(C)=

(D)=  
(E)=  
(F)=

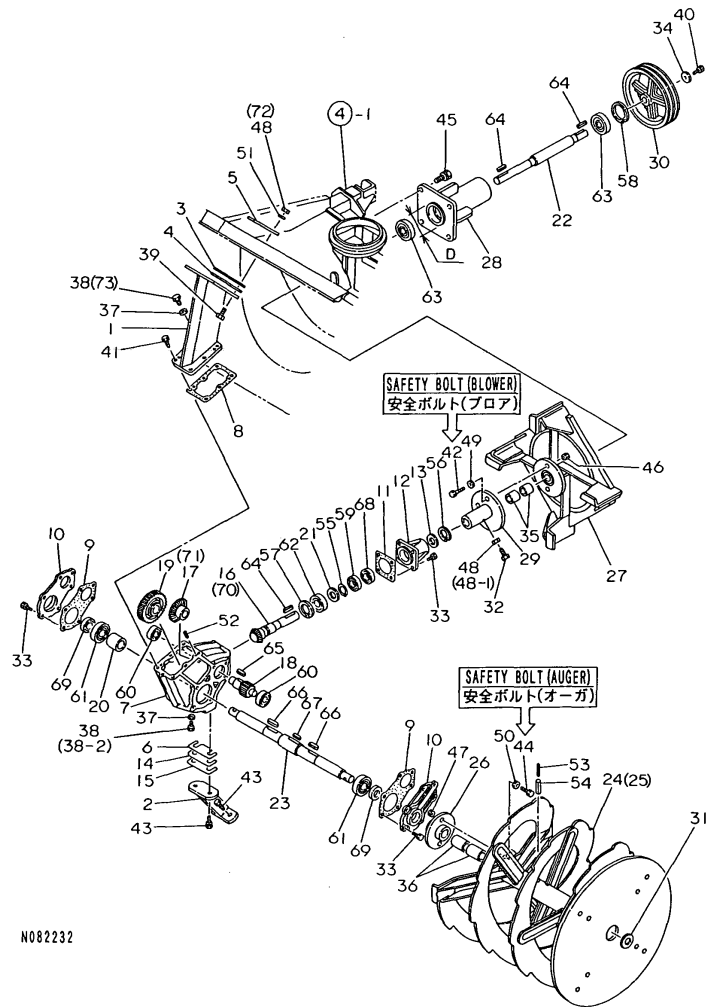
No.	Lev.	Parts No.	Description	Qty						I	R
				(A)	(B)	(C)	(D)	(E)	(F)		
83-2	1	26013-050162 (B=F705301)	BOLT, M5X 16		3						Z
84	1	1N3163-14000	BASE COMP.,MOTOR		1						Z
85	1	1N3223-19030 (B=F705301)	SLEIH (H)		1						W 4
85-1	1	1N3223-19030 (B=F705301)	SLEIH (H)		1						Z
86	1	1N3223-19040 (B=F603197)	SLEIH (R)		1						W 4
86-1	1	1N3223-19040 (B=F705301)	SLEIH (R)		1						Z
87	1	22157-100000 (B=F603197)	WASHER, 10		2						W 4
87-1	1	22157-100000 (B=F705301)	WASHER, 10		2						Z
88	1	1N1767-59020 (B=F603197)	PIN 4X25,SUS SPRING		1						W
88-1	1	22351-040025 (B=F603197)	PIN, SPRING 4.0X25		1						N 5
88-2	1	22351-040025 (B=F705301)	PIN, SPRING 4.0X25		1						Z
89	1	26377-120002 (B=F603197)	NUT, M12		8						W
89-1	1	26377-120002 (B=F705301)	NUT, M12		8						Z
90	1	22351-025025 (B=F603197)	PIN 2.5A* 25		1						W
90-1	1	22351-025025 (B=F705301)	PIN 2.5A* 25		1						Z

Remarks

- (1) REF. NOS.27,29&72 ARE INTER-CHANGEABLE BY SET WITH REF. NOS 27-1,29-1 & 72-1.
- (2) REF. NO.1 & GROUP NO.5 REF.NO. 28 ARE INTERCHANGEABLE BY SET WITH REF. NO.1 & GROUP NO.5 REF. NO.28-1.
- D=74MM FOR REF. NO.1A OR 90MM FOR REF. NO.1A-1.
- (3) D=3MM FOR REF. NOS.27 & 29 OR 4.5MM FOR REF. NOS.27-1 & 29-1.

Fig.5. GEAR CASE & AUGER

5. GEAR CASE & AUGER



N082232

Remarks

(1) REF.NO.28 & GROUP NO.4 REF.NO.1 ARE INTERCHANGEABLE BY SET WITH REF.NO.28-1 & GROUP NO.4 REF.NO.1-1 D=74MM FOR REF.NO.28 OR 90MM FOR REF. NO.28-1.

(2) REF.NOS.42&49 ARE A SET AND INTERCHANGEABLE WITH A SET OF REF.NOS. 42-1&49-1.

(3) REF.NOS.44&50 ARE A SET AND INTERCHANGEABLE WITH A SET OF REF.NOS. 44-1&50-1.

(A)=YSR1310HE  
(B)=YSR1320  
(C)=

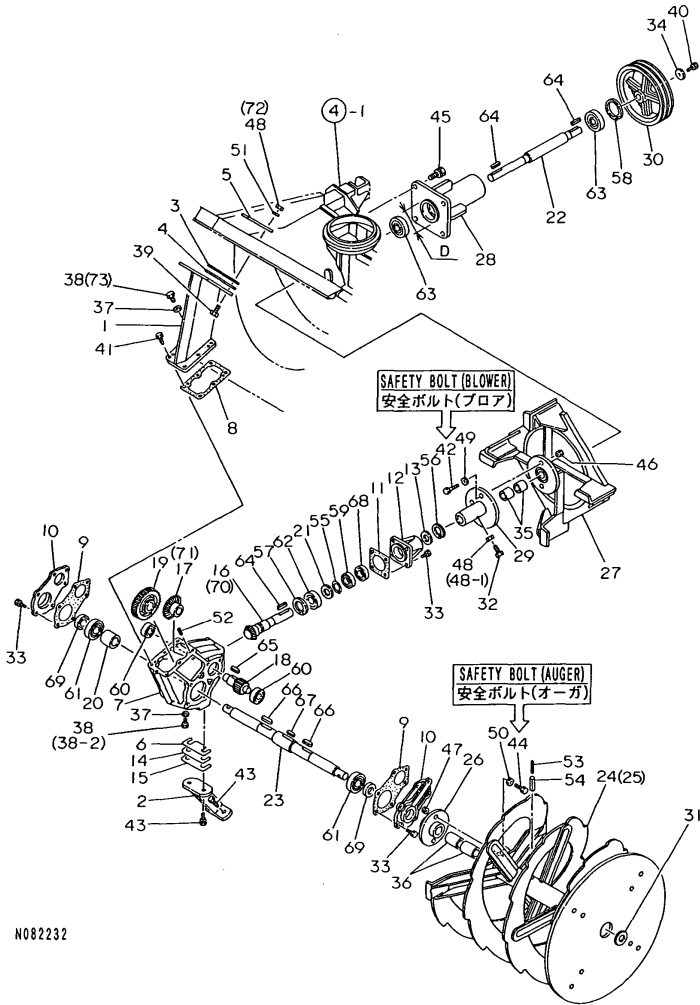
(D)=  
(E)=  
(F)=

No.	Lev.	Parts No.	Description	Qty						I	R
				(A)	(B)	(C)	(D)	(E)	(F)		
1	1	1N1953-12000	SUPPORT,AGR.GR.CASE	1	1						
2	1	1N1953-14000	SUPPORT CMP.,GR.CASE	1	1						
3	1	1N1953-19030	LINER 1.0,SUPPORT	2	2						
4	1	1N1953-19040	LINER 2.0,SUPPORT	5	5						
5	1	1N1953-19050	PLATE A,DOUBLING	2	2						
6	1	1N1953-19060	SHIM T=0.3	2	2						
7	1	1N1673-19110	CASE,AUGER GEAR	1	1						
8	1	1N1610-70020	PACKING,AUGER GR.CS.	1	1						
9	1	1N1610-70030	PACKING,GR.CS.COVER	2	2						
10	1	1N1633-19040	COVER,AUGER GEAR CS.	2	2						
11	1	1N1610-70040	PACKING,INPUT HOUSG	1	1						
12	1	1N1763-19060	HOUSING,INPUT	1	1						
13	1	1N1610-70070	PLATE,PROTECTIVE	1	1						
14	1	1N1610-70210	LINER 2.0,GEAR CASE	1	1						
15	1	1N1610-70220	LINER 0.6,GEAR CASE	3	3						
16	1	1N1600-77640	GEAR M3X13,BEVEL	1							
17	1	1N1763-29020	GEAR M3X33,BEVEL	1							
18	1	1N1763-29030	GEAR M3.5X10,BEVEL	1	1						
19	1	1N1763-29040	GEAR M3.5X35,SPUR	1	1						
20	1	1N1633-29050	COLLAR 40X40	1	1						
21	1	1N1763-29050	WASHER 28X40X2,THRST	1	1						
22	1	1N3153-49010	SHAFT,BLOWER	1	1						
23	1	1N1633-49020	SHAFT,AUGER	1	1						
24	1	1N3153-51000	AUGER L COMPL.	1	1						
25	1	1N3153-52000	AUGER R COMPL.	1	1						
26	1	1N1863-55000	FLANGE CMP,AUGER SHR	2	2						
27	1	1N3073-61000	BLOWER COMPL.	1	1						
28	1	1N3153-61000	MP	1	1						
28-1	1	1N3153-61001 (B=F502384)	MP		1						F 1
29	1	1N3073-62000	JOINT,AUGER	1	1						
30	1	1N1600-70960	V-PULLEY 230BX25	1	1						
30-1	1	1N3156-39060 (B=F603197)	V-PULLEY 230B-2X25		1						N
31	1	1N1639-19260 (B=F705301)	WASHER,THRUST	2	2						Z
32	1	1N1600-74650	BOLT 10X30,MACHINE	1	1						
33	1	1N1600-73590	BOLT W/SP,SM.PRECORD	16	16						
34	1	1N1600-72960	WASHER 8X35X3.2,RD.	1	1						
34-1	1	1N1600-80570 (B=F603197)	WASHER 8X35X4.5,RD.		1						R
35	1	1N1600-75180	LINER ML2530	2	2						
35-1	1	1N1600-79300 (B=F603197)	BUSH BM2530FB		2						R
36	1	1N1600-75200	LINER ML3550	4	4						
36-1	1	1N1600-79320 (B=F603197)	BUSH BM3550FB		4						R
37	1	1N1600-77650	PACKING 10X18X2,RD.	2	2						
38	1	26027-100102	BOLT 10X10,HEX.	2	2						
38-1	1	26207-100162 (B=F603197)	BOLT M10X 16 PLATED		2						R



Fig.5. GEAR CASE & AUGER

5. GEAR CASE & AUGER



N082232

Remarks

(1) REF.NO.28 & GROUP NO.4 REF.NO.1 ARE INTERCHANGEABLE BY SET WITH REF.NO.28-1 & GROUP NO.4 REF.NO.1-1 D=74MM FOR REF.NO.28 OR 90MM FOR REF. NO.28-1.

(2) REF.NOS.42&49 ARE A SET AND INTERCHANGEABLE WITH A SET OF REF.NOS. 42-1&49-1.

(3) REF.NOS.44&50 ARE A SET AND INTERCHANGEABLE WITH A SET OF REF.NOS. 44-1&50-1.

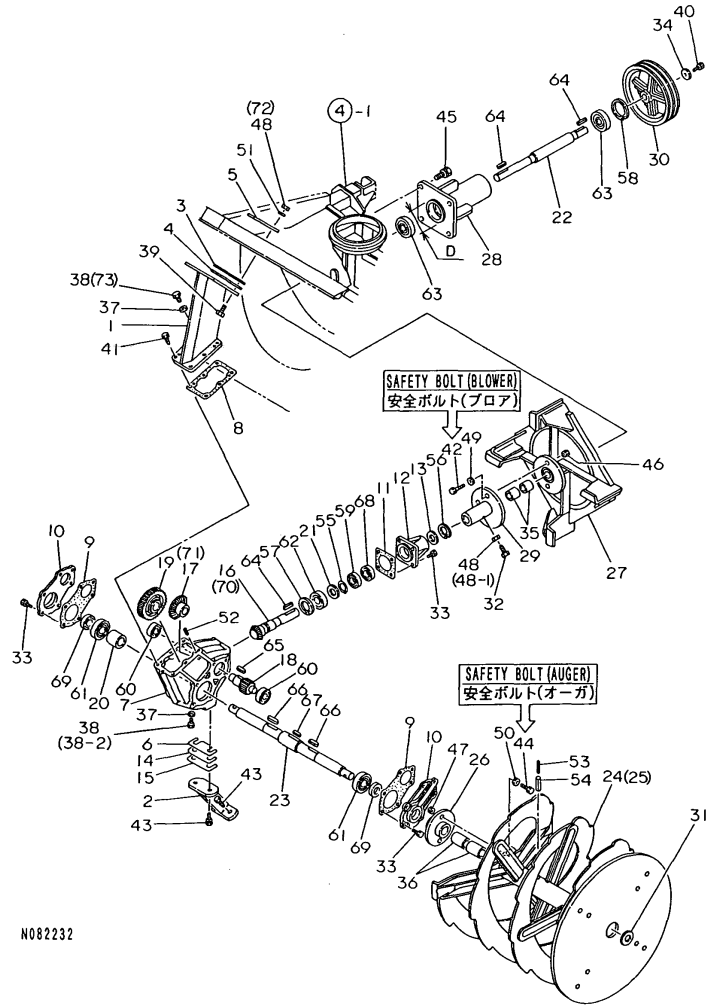
(A)=YSR1310HE  
(B)=YSR1320  
(C)=

(D)=  
(E)=  
(F)=

No.	Lev.	Parts No.	Description	Q'ty						I	R
				(A)	(B)	(C)	(D)	(E)	(F)		
38-2	1	26207-100162	BOLT M10X 16 PLATED (B=F705301)		1						K
39	1	26117-100302	BOLT M10X 30		6	6					
39-1	1	26116-100402	BOLT, M10X 40 PLATED (B=F603197)		6						R
39-2	1	26116-100352	BOLT, M10X 35 PLATED (B=F801771)		6						R
40	1	26013-080204	BOLT M 8X 20		1	1					
40-1	1	26106-080202	BOLT, M8X 20 PLATED (B=F603197)		1						R
41	1	1N1600-74610	BOLT 8X25		6	6					
41-1	1	1N1600-73590	BOLT W/SP.SM.PRECORD (B=F603197)		6						R
42	1	26013-080304	BOLT M 8X 30		1	1					
42-1	1	26207-080254	BOLT 8X25 (B=F603197)		1						F 2
43	1	26013-100252	BOLT, M10X 25		4	4					
43-1	1	1N1600-78890	BOLT M10X30,SM.SPRG (B=F603197)		4						R
44	1	26013-100304	BOLT, M10X 30		2	2					
44-1	1	26207-100304	BOLT, M10X 30 PLATED (B=F603197)		2						F 3
45	1	26013-120304	BOLT, M12X 30		4	4					
45-1	1	26013-120302	BOLT, M12X 30 (B=F603197)		4						R
46	1	26707-080002	NUT, M8		1	1					
47	1	26707-100002	NUT, M10		2	2					
48	1	26717-100002	NUT, M10		7	7					
48-1	1	26717-100002	NUT, M10 (B=F603197)		1						K
49	1	22137-080000	WASHER, 8		1	1					
49-1	1	22217-080000	WASHER, SPRING 8 (B=F603197)		1						F 2
50	1	22137-100000	WASHER, 10		2	2					
50-1	1	22217-100000	WASHER, SPRING 10 (B=F603197)		2						F 3
51	1	22217-100000	WASHER, SPRING 10 (B=F603197)		6	6					Z
52	1	22351-060016	PIN, SPRING 6.0X16		2	2					
53	1	22351-060045	PIN, SPRING 6.0X45		2	2					
54	1	22351-010045	SPRING PIN 1.0X45		2	2					
55	1	22242-000280	RING, 28		1	1					
56	1	22252-000450	RING, 45		1	1					
57	1	22252-000520	RING, 52		1	1					
58	1	22252-000620	RING, 62		1	1					
59	1	24101-060054	BEARING, BALL 6005		1	1					
60	1	24101-062054	BEARING, BALL 6205		2	2					
61	1	24101-062074	BEARING, BALL 6207		2	2					
62	1	1N1600-77730	BEARING 60/28		1	1					
63	1	24104-063054	BEARING, BALL 6305UU		2	2					
64	1	1N1600-72000	KEY 7X7X33 SS,FEATHR		3	3					

Fig.5. GEAR CASE & AUGER

5. GEAR CASE & AUGER



N082232

Remarks

(1) REF.NO.28 & GROUP NO.4 REF.NO.1 ARE INTERCHANGEABLE BY SET WITH REF.NO.28-1 & GROUP NO.4 REF.NO.1-1 D=74MM FOR REF.NO.28 OR 90MM FOR REF. NO.28-1.

(2) REF.NOS.42&49 ARE A SET AND INTERCHANGEABLE WITH A SET OF REF.NOS. 42-1&49-1.

(3) REF.NOS.44&50 ARE A SET AND INTERCHANGEABLE WITH A SET OF REF.NOS. 44-1&50-1.

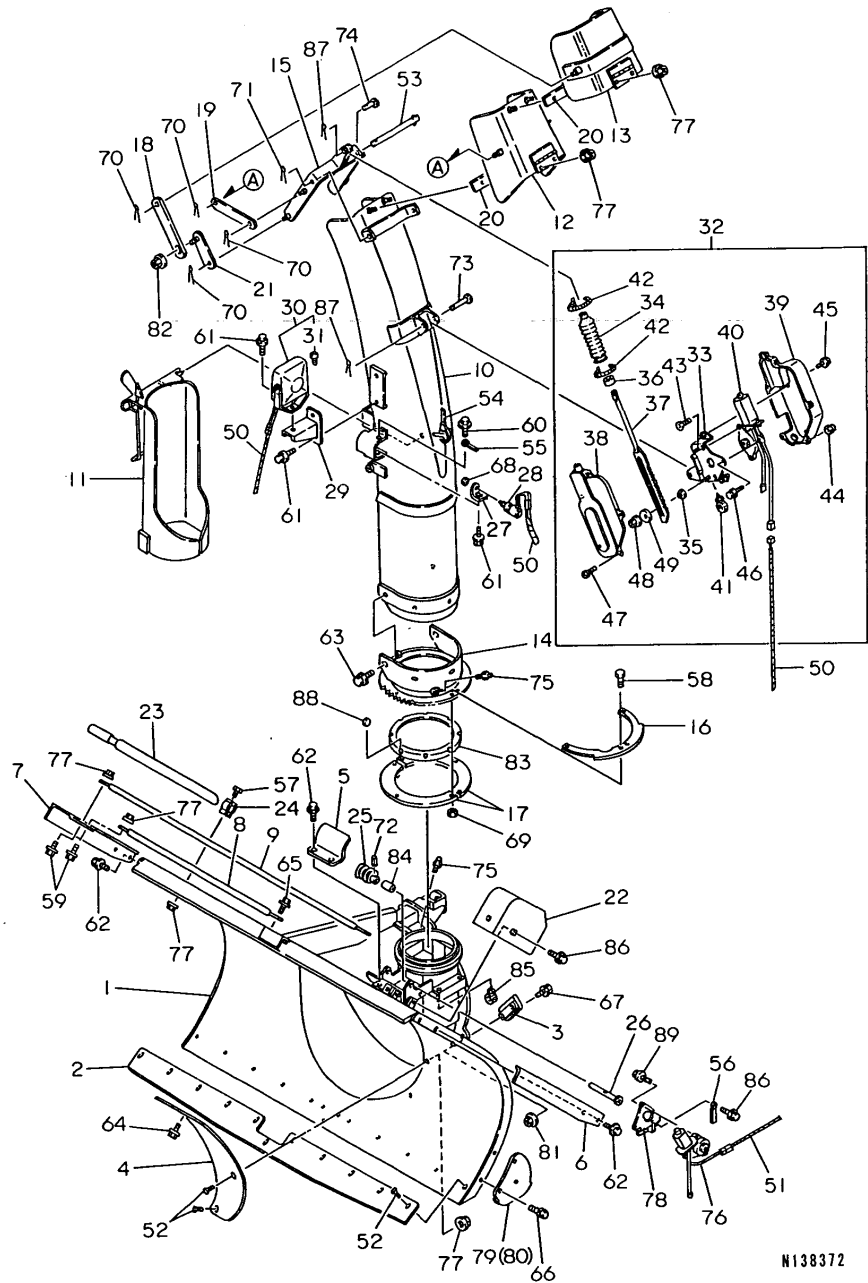
(A)=YSR1310HE  
(B)=YSR1320  
(C)=

(D)=  
(E)=  
(F)=

No.	Lev.	Parts No.	Description	Qty						I	R
				(A)	(B)	(C)	(D)	(E)	(F)		
65	1	1N1600-72040	KEY 8X7X30 RR,FEATHR	1	1						
66	1	1N1600-72090	KEY 10X8X40RR,SUNK	2	2						
67	1	1N1600-72110	KEY 12X8X32 SR,SUNK	1	1						
68	1	24421-254008	SEAL, OIL TC254008	1	1						
69	1	24421-355511	SEAL, OIL TC355511	2	2						
70	1	1N3153-29010	GEAR M3X14,BEVEL		1						
71	1	1N1763-29070	GEAR M3X33,BEVEL		1						
72	1	1N1600-78920 (B=F603197)	NUT M10,HARD LOCK	6							W
73	1	26207-100102 (B=F705301)	BOLT M10X 10 PLATED		1						W

Fig.12. SNOW REMOVING FRAM & CHUTE (ADDNL.ITEM)

1 2 . SNOW REMOVING FRAM & CHUTE (ADDNL.ITEM)



N138372

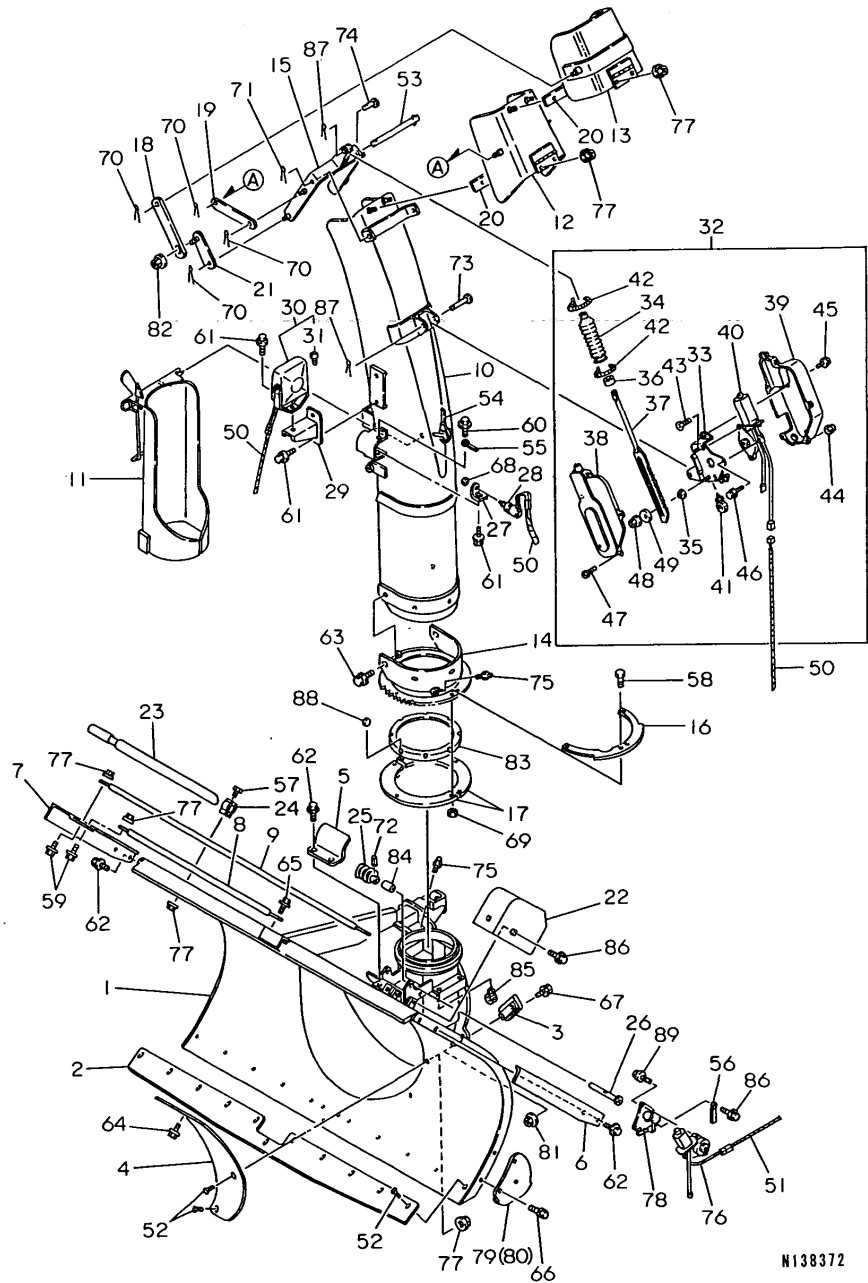
(A)=YSR1310HE  
(B)=YSR1320  
(C)=

(D)=  
(E)=  
(F)=

No.	Lev.	Parts No.	Description	Q'ty						I	R
				(A)	(B)	(C)	(D)	(E)	(F)		
1	1	7N3153-11002 (B=F705301)	PL.AS,SNW.REMV.FRAME		1						W
2	1	1N1953-19010 (B=F705301)	EDGE		1						W
3	1	1N3243-12000 (B=F705301)	GUIDE COMP.,ROLLING		4						W
4	1	1N1953-19020 (B=F705301)	PLATE,SHIELDING		1						W
5	1	1N3153-89010 (B=F705301)	COVER,WORM		1						W
6	1	1N1673-21000 (B=F705301)	PLATE L CMP,SNOW CUT		1						W
7	1	1N1673-22000 (B=F705301)	PLATE R CMP,SNOW CUT		1						W
8	1	1N1630-70090 (B=F705301)	BKR A,SNOW CUTTING		2						W
9	1	1N1630-70100 (B=F705301)	BKR B,SNOW CUTTING		1						W
10	1	7N3153-31000 (B=F705301)	PL.ASSY.,SHOOTER		1						W
11	1	7N3073-32000 (B=F705301)	COVER CMP.,CARTRIDGE		1						W
12	1	1N3163-33000 (B=F705301)	DEFLECTOR A COMPL.		1						W
13	1	1N3163-34000 (B=F705301)	DEFLECTOR B COMPL.		1						W
14	1	1N3153-32000 (B=F705301)	BASE COMP.,SHOOTER		1						W
15	1	1N3163-35000 (B=F705301)	ARM COMP.,SHOOTER		1						W
16	1	1N3163-39030 (B=F705301)	STOPPER,SHOOTER		1						W
17	1	1N1673-39010 (B=F705301)	CLAMP,CHUTE		2						W
18	1	1N3163-39020 (B=F705301)	LINK B,SHOOTER		2						W
19	1	1N3163-39070 (B=F705301)	ARM 133,LINK		2						W
20	1	1N1673-39030 (B=F705301)	RUBBER,CHUTE		2						W
21	1	1N3163-36000 (B=F705301)	LINK A,SHOOTER		2						W
22	1	1N3153-81000 (B=F705301)	COVER COMP.,MOTOR		1						W
23	1	1N1803-99010 (B=F705301)	ROD,SNOW SHOVELING		1						W
24	1	1N1803-99020 (B=F705301)	METAL,LOCK		2						W
25	1	1N1610-70131 (B=F705301)	WORM		1						W
26	1	1N3153-41000	SHAFT COMP,WORM		1						W

Fig.12. SNOW REMOVING FRAM & CHUTE (ADDNL.ITEM)

1 2 . SNOW REMOVING FRAM & CHUTE (ADDNL.ITEM)



N138372

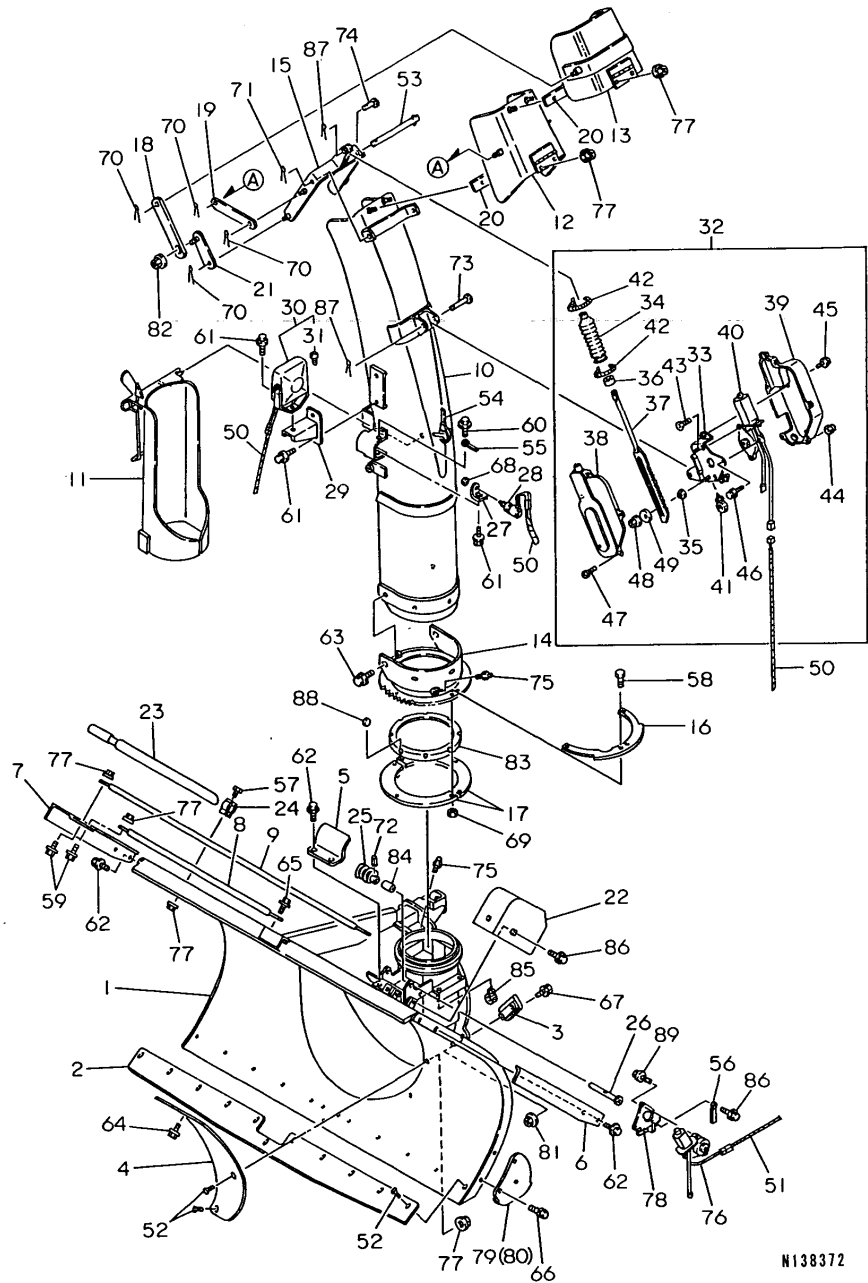
(A)=YSR1310HE  
(B)=YSR1320  
(C)=

(D)=  
(E)=  
(F)=

No.	Lev.	Parts No.	Description	Q'ty						I	R
				(A)	(B)	(C)	(D)	(E)	(F)		
			(B=F705301)								
27	1	1N3078-11000	BRACKET CMP,CHUTE SW (B=F705301)		1						W
28	1	1N1808-31000	SWITCH, GUARD (B=F705301)		1						W
29	1	1N1678-35000	STAY, CHUTE LIGHT (B=F705301)		1						W
30	1	1N3248-34000	LAMP S, WORKING (B=F705301)		1						W
31	2	1N3248-34200	BULB 12V-23W (B=F705301)		1						W
32	1	7N3163-00010	MOTOR ASSY., SHOOTER (B=F705301)		1						W
33	2	1N3163-37000	BRACKET A COMP., MOT. (B=F705301)		1						W
34	2	1N3163-39040	BOOT, SHOOTER (B=F705301)		1						W
35	2	1N3163-39060	COLLAR (B=F705301)		2						W
36	2	1N3163-39080	TUBE, SPACER (B=F705301)		1						W
37	2	1N3163-42000	RACK COMP., SHOOTER (B=F705301)		1						W
38	2	1N3163-89050	COVER L, MOTOR (B=F705301)		1						W
39	2	1N3163-89080	COVER R, MOTOR (B=F705301)		1						W
40	2	1N3198-21000	MOTOR ASSY., SHOOTER (B=F705301)		1						W
41	2	1N1600-81440	CLIP C-4397, CABLE (B=F705301)		1						W
42	2	1N1600-81430	BAND CV-140SW, CABLE (B=F705301)		2						W
43	2	1N1600-81490	SCREW M6X 16, CRFHMC. (B=F705301)		2						W
44	2	1N1600-81460	U-NUT M 5 (B=F705301)		5						W
45	2	26106-060122	BOLT, M6X 12 PLATED (B=F705301)		2						W
46	2	26106-060162	BOLT, M6X 16 PLATED (B=F705301)		1						W
47	2	1N1600-81450	SCREW M 5X 12 (B=F705301)		5						W
48	2	26367-060002	NUT, M6 (B=F705301)		2						W
49	2	22157-060000	WASHER, 6 (B=F705301)		2						W
50	1	1N3158-56000	HARNASS, SHOOTER (B=F705301)		1						W
51	1	1N3158-57000	HARNASS (B=F705301)		1						W

Fig.12. SNOW REMOVING FRAM & CHUTE (ADDNL.ITEM)

1 2 . SNOW REMOVING FRAM & CHUTE (ADDNL. ITEM)



N138372

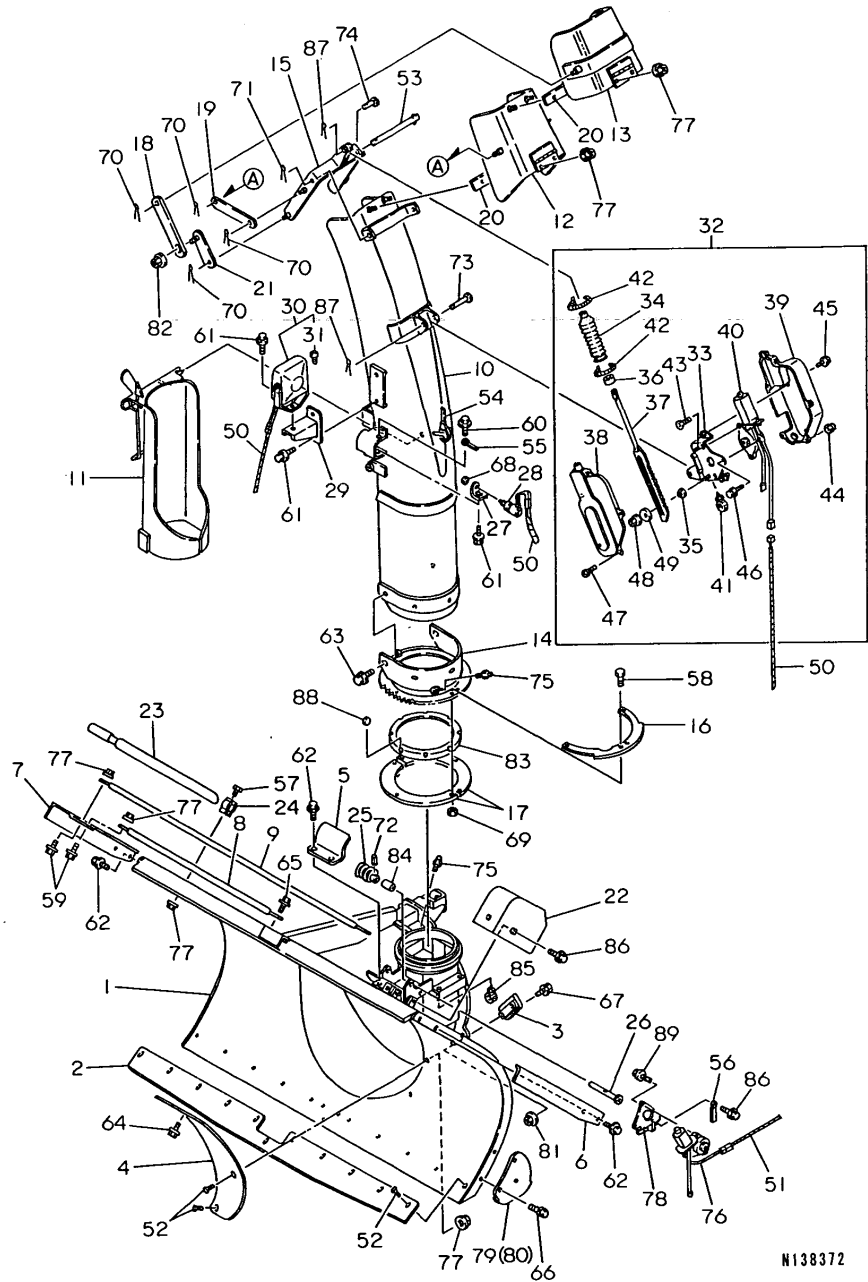
(A)=YSR1310HE  
(B)=YSR1320  
(C)=

(D)=  
(E)=  
(F)=

No.	Lev.	Parts No.	Description	Q'ty						I	R
				(A)	(B)	(C)	(D)	(E)	(F)		
52	1	1N1600-77630	BOLT 8X15,HEX.SCKT.F (B=F705301)		13						W
53	1	1N1600-77140	PIN 10X185,PRESS (B=F705301)		1						W
54	1	1N1600-77210	TIE RF140,REPEAT (B=F705301)		2						W
55	1	1N1600-75450	CLAMP 6X45,CORD (B=F705301)		1						W
56	1	1N1600-75120	CLAMP 8X80,CORD (B=F705301)		1						W
57	1	26116-080162	BOLT, M8X 16 PLATED (B=F705301)		2						W
58	1	26116-080202	BOLT, M8X 20 PLATED (B=F705301)		6						W
59	1	26106-080252	BOLT, M8X 25 PLATED (B=F705301)		4						W
60	1	26106-060122	BOLT, M6X 12 PLATED (B=F705301)		1						W
61	1	26106-080122	BOLT, M8X 12 PLATED (B=F705301)		4						W
62	1	26106-080162	BOLT, M8X 16 PLATED (B=F705301)		6						W
63	1	26106-080122	BOLT, M8X 12 PLATED (B=F705301)		5						W
64	1	26106-080202	BOLT, M8X 20 PLATED (B=F705301)		1						W
65	1	26106-080202	BOLT, M8X 20 PLATED (B=F705301)		2						W
66	1	26013-100252	BOLT, M10X 25 (B=F705301)		4						W
67	1	26136-120452	BOLT, M12X 45 PLATED (B=F705301)		8						W
68	1	26737-120002	NUT, M12 (B=F705301)		1						W
69	1	26717-080002	NUT, M8 (B=F705301)		6						W
70	1	22417-250160	PIN, COTTER 2.5X16 (B=F705301)		8						W
71	1	1N1600-72160	PIN 3X20,COTTER (B=F705301)		1						W
72	1	22351-045025	PIN, SPRING 4.5X25 (B=F705301)		1						W
73	1	1N1600-81470	PIN 8X55,ROUND HEAD (B=F705301)		1						W
74	1	1N1600-79550	PIN 8X25,ROUND HEAD (B=F705301)		1						W
75	1	1N1600-75150	NIPPLE A-MT6X1,GRS. (B=F705301)		4						W
76	1	1N3198-21000	MOTOR ASSY.,SHOOTER (B=F705301)		1						W
77	1	26367-080002	NUT, M8		12						W

Fig.12. SNOW REMOVING FRAM & CHUTE (ADDNL.ITEM)

1 2 . | SNOW REMOVING FRAM & CHUTE | (ADDNL. ITEM)



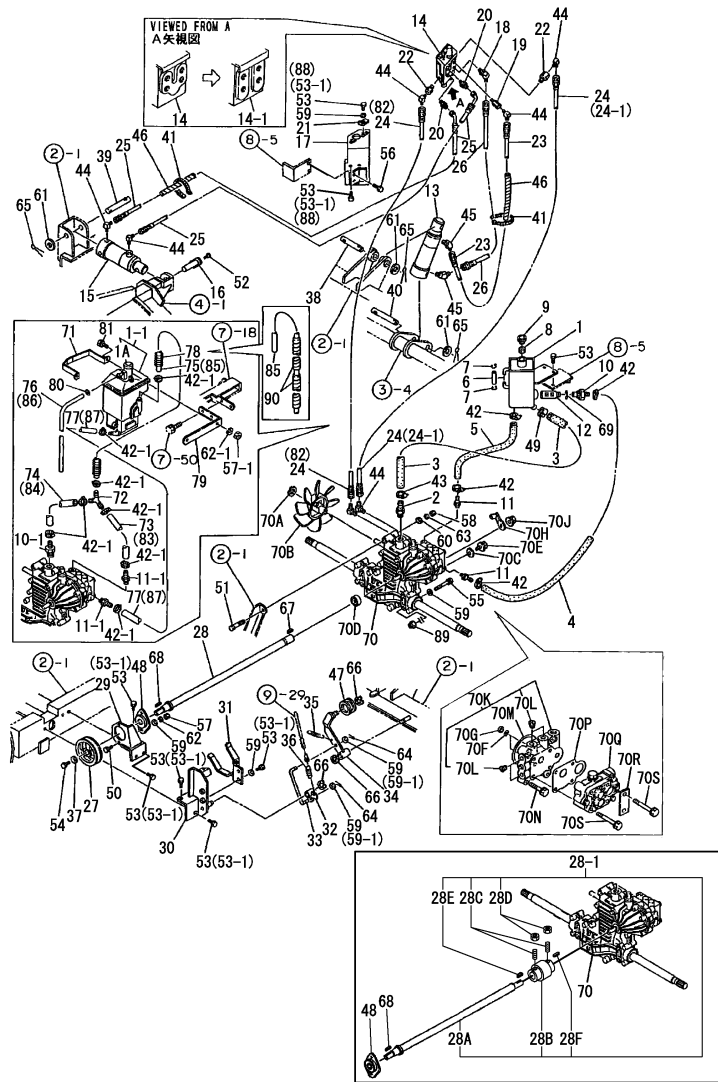
N138372

(A)=YSR1310HE  
(B)=YSR1320  
(C)=

(D)=  
(E)=  
(F)=

No.	Lev.	Parts No.	Description	Q'ty						I	R
				(A)	(B)	(C)	(D)	(E)	(F)		
			(B=F705301)								
78	1	1N3153-12000	BRACKET COMP.,MOTOR		1						W
			(B=F705301)								
79	1	1N3223-19030	SLEIH (H)		1						W
			(B=F705301)								
80	1	1N3223-19040	SLEIH (R)		1						W
			(B=F705301)								
81	1	26377-120002	NUT, M12		8						W
			(B=F705301)								
82	1	26367-080002	NUT, M8		2						W
			(B=F705301)								
83	1	1N3163-39050	RETAINER,BALL		1						W
			(B=F705301)								
84	1	1N3153-49030	COLLAR,WORM		1						W
			(B=F705301)								
85	1	1N1600-81440	CLIP C-4397,CABLE		2						W
			(B=F705301)								
86	1	26106-080162	BOLT, M8X 16 PLATED		5						W
			(B=F705301)								
87	1	22417-250160	PIN, COTTER 2.5X16		2						W
			(B=F705301)								
88	1	1N1600-81480	BALL 8.5,STEEL		8						W
			(B=F705301)								
89	1	26106-060162	BOLT, M6X 16 PLATED		3						W
			(B=F705301)								

Fig.6. HYDRAULIC PIPING



Remarks

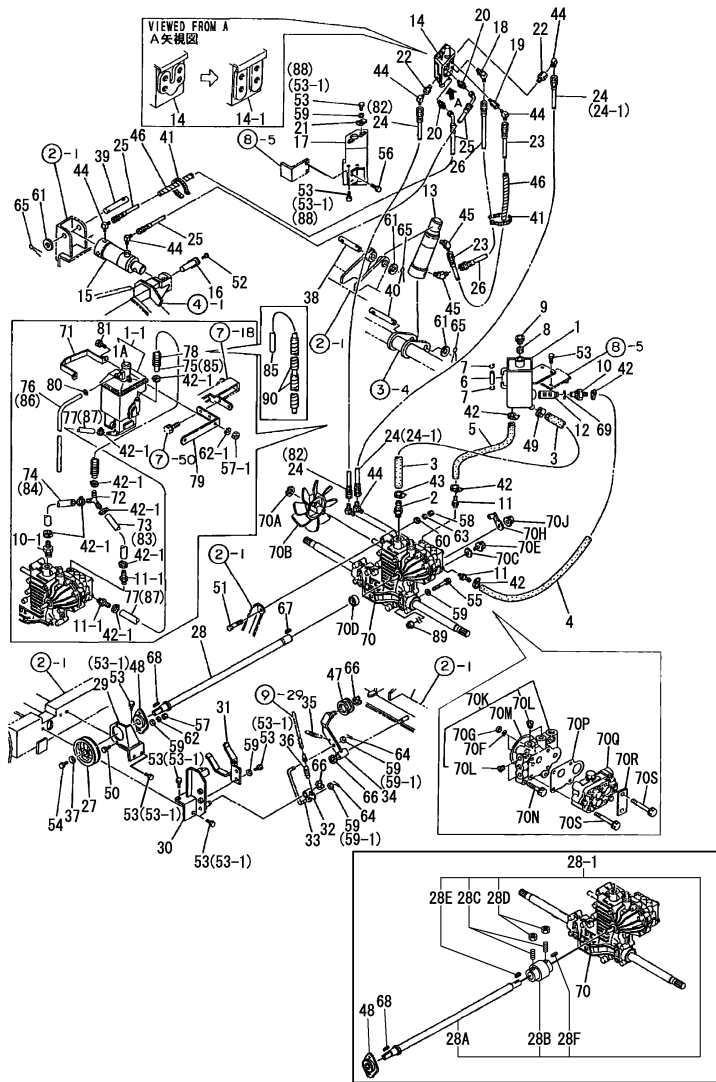
- (1) IT IS THE TRANSMISSION DISASSEMBLING LOAD.
- (2) REF.NO.14 IS INTERCHANGEABLE WITH A SET OF 14-1 AND GROUP NO.8, REF. NOS.7-1,50-1.
- (3) REF.NOS.51,58,60 AND 63 ARE A SET AND INTERCHANGEABLE WITH A SET OF 51-1 AND 58-1.

(A)=YSR1310HE  
(B)=YSR1320  
(C)=

(D)=  
(E)=  
(F)=

No.	Lev.	Parts No.	Description	Q'ty						I	R
				(A)	(B)	(C)	(D)	(E)	(F)		
1	1	1N3151-61000	SUB RESERVOIR ASSY	1							
1-1	1	1N1600-77790	TANK, LUB OIL	1	1						S
(A=F305281)											
1A	2	1N1600-81520	CAP	1	1						W
(A=F305281)											
2	1	1N3151-69020	ADAPTER PT3/4,SP.M1	1							Z
(A=F305281)											
3	1	1N3151-69030	HOSE 19X530	1							Z
(A=F305281)											
4	1	1N3151-69040	HOSE 12X600	1							Z
(A=F305281)											
5	1	1N3151-69050	HOSE 12X580	1							Z
(A=F305281)											
6	1	1N3151-69060	HOSE 5X55,GAUGE	1							Z
(A=F305281)											
7	1	1N3151-69070	CLIP B6.5,TUBE	2							Z
(A=F305281)											
8	1	1N3151-69080	SPONGE 23X15	1							Z
(A=F305281)											
9	1	1N3151-69090	BREATHER EZ2222A3,AR	1							Z
(A=F305281)											
10	1	1N3151-69100	ADAPTER PF3/4 CMP,SP	1							
10-1	1	1N3151-69210	PORT PT3/4X13.5,HOSE	1	1						S
(A=F305281)											
11	1	1N3151-69110	ADAPTER PT1/4 CMP,SP	2							
11-1	1	1N3151-69140	PORT PT1/4X12,HOSE	2	2						S
(A=F305281)											
12	1	1N3151-79010	FILTER	1							Z
(A=F305281)											
13	1	1N3155-00010	CYLINDER CW50X115	1	1						
14	1	1N1675-00040	VALVE,CONTROL	1	1						
14-1	1	1N3155-00021	CONTROL VALVE UNIT	1							F 2
(B=F603197)											
15	1	1N1675-00050	CYLINDER 50X60	1	1						
16	1	1N3155-11000	PIN COMP.,CYLINDER	1	1						
17	1	1N3075-12000	BASE COMPL.,VALVE	1	1						
18	1	1N1635-19010	ELBOW 1/4X1/4 W/SEAT	1	1						
19	1	1N1625-19010	JOINT 1/4X1/4	1	1						
20	1	1N1865-19010	ADAPTER	2	2						
21	1	1N1675-19020	STOPPER,HYDRO.LEVER	2	2						
22	1	1N1625-19020	JOINT 1/4X3/8	2	2						
23	1	1N1600-77560	HOSE 900 CMP.,HYDRO.	1	1						
24	1	1N3066-71000	HOSE 350 COMP.,HYD.	2							
24-1	1	1N3066-71000	HOSE 350 COMP.,HYD.	1	1						K
(A=F305281)											
25	1	1N1600-77570	HOSE 1300 CMP,HYDRO.	2	2						
26	1	1N1600-77580	HOSE 1000 CMP,HYDRO.	1	1						
27	1	1N3156-39010	V-PULLEY 100B-20	1	1						
28	1	1N3156-41000	SHAFT, COUNTER	1	1						
28-1	1	1N1600-81780	SHAFT, COUNTER	1	1						N
(A=FXXXXXX) (B=FXXXXXX)											

Fig.6. HYDRAULIC PIPING



Remarks

- (1) IT IS THE TRANSMISSION DISASSEMBLING LOAD.
- (2) REF.NO.14 IS INTERCHANGEABLE WITH A SET OF 14-1 AND GROUP NO.8, REF. NOS.7-1,50-1.
- (3) REF.NOS.51,58,60 AND 63 ARE A SET AND INTERCHANGEABLE WITH A SET OF 51-1 AND 58-1.

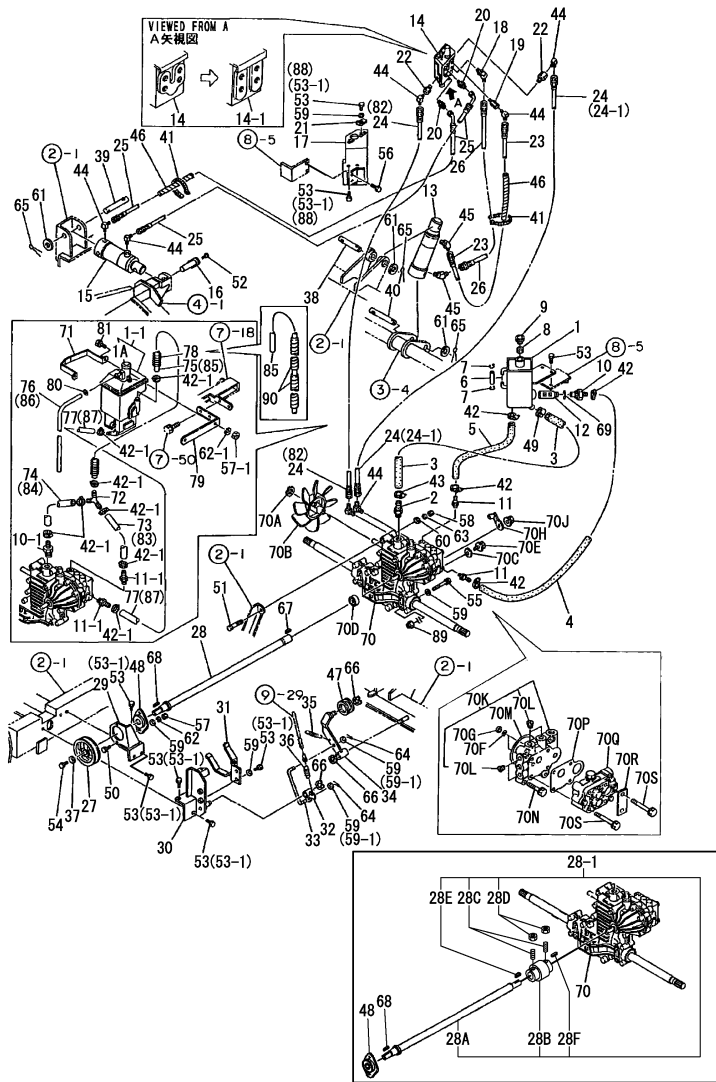
(A)=YSR1310HE  
(B)=YSR1320  
(C)=

(D)=  
(E)=  
(F)=

No.	Lev.	Parts No.	Description	Q'ty						I	R
				(A)	(B)	(C)	(D)	(E)	(F)		
28A	2	1N3156-41002 (A=FXXXXXX) (B=FXXXXXX)	SHAFT, COUNTER	1	1						W
28B	2	1N3156-00011 (A=FXXXXXX) (B=FXXXXXX)	COUPLING	1	1						W
28C	2	1N1600-81790 (A=FXXXXXX) (B=FXXXXXX)	SCREW 8X20	2	2						W
28D	2	26717-080002 (A=FXXXXXX) (B=FXXXXXX)	NUT, M8	2	2						W
28E	2	1N1600-77520 (A=FXXXXXX) (B=FXXXXXX)	KEY 5X5X20	1	1						W
28F	2	1N1600-81800 (A=FXXXXXX) (B=FXXXXXX)	KEY 6X6X20	1	1						W
29	1	1N3156-51000	BRACKET COMP.,UNIT	1	1						
30	1	1N3156-52000	HOLDER COMP.,WIRE	1	1						
31	1	1N3156-55000	STOPPER,COUNTER BELT	1	1						
32	1	1N3156-57000	CAM COMP.,TENSION	1	1						
33	1	1N3156-59010	ROD 150,TENSION	1	1						
34	1	1N3156-62000	ARM CMP,TRAVEL CLTCH	1	1						
35	1	1N1600-70450	SPRING,BACK	1	1						
36	1	1N1600-70260	SPRING,MAIN CLUTCH	1	1						
37	1	1N1600-74730	WASHER 8X30X4.5,RD.	1	1						
37-1	1	1N1600-77040 (B=F603197)	WASHER 8X30X3.2,CIRC		1						R
38	1	1N1600-77590	PIN 20X85,LUGGED	1	1						
39	1	1N1600-73500	PIN 20X95,LUGGED	1	1						
40	1	1N1600-74660	PIN 20X100,SLOTTED	1	1						
41	1	1N1600-74330	TIE RF250,REPEAT	2	2						
42	1	1N1600-77310	BAND 19,UNIVERSAL	4							
42-1	1	1N1600-77310 (A=F305281)	BAND 19,UNIVERSAL	8	8						K
43	1	1N1600-77320 (A=F305281)	BAND 25,UNIVERSAL	1							Z
44	1	1N1600-75020	ELBOW 90 302204	7	7						
45	1	1N1600-74340	ELBOW 45 302404	2	2						
46	1	1N1600-75360	PLUMMER 15X200	5	5						
47	1	1N1600-75500	PULLEY YTPS50-15,TEN	1	1						
48	1	1N1600-75270	FLANGE UNIT,RHOMBIC	1	1						
49	1	1N1600-77330	BAND 30,UNIVERSAL	1							
50	1	1N1600-74740	BOLT 8X25	2	2						
50-1	1	26106-080202 (B=F603197)	BOLT, M8X 20 PLATED		2						R
51	1	26117-100502	BOLT M10X 50 PLATED	1	1						
51-1	1	26136-100502 (B=F603197)	BOLT, M10X 50 PLATED		1						F 3
52	1	26013-060102	BOLT, M6X 10	1	1						
52-1	1	26106-060102 (B=F603197)	BOLT, M6X 10 PLATED		1						R
53	1	26013-080204	BOLT M 8X 20	14							
53-1	1	26013-080204 (A=F305281)	BOLT M 8X 20	12	12						K
53-2	1	26106-080202	BOLT, M8X 20 PLATED		7						R



Fig.6. HYDRAULIC PIPING



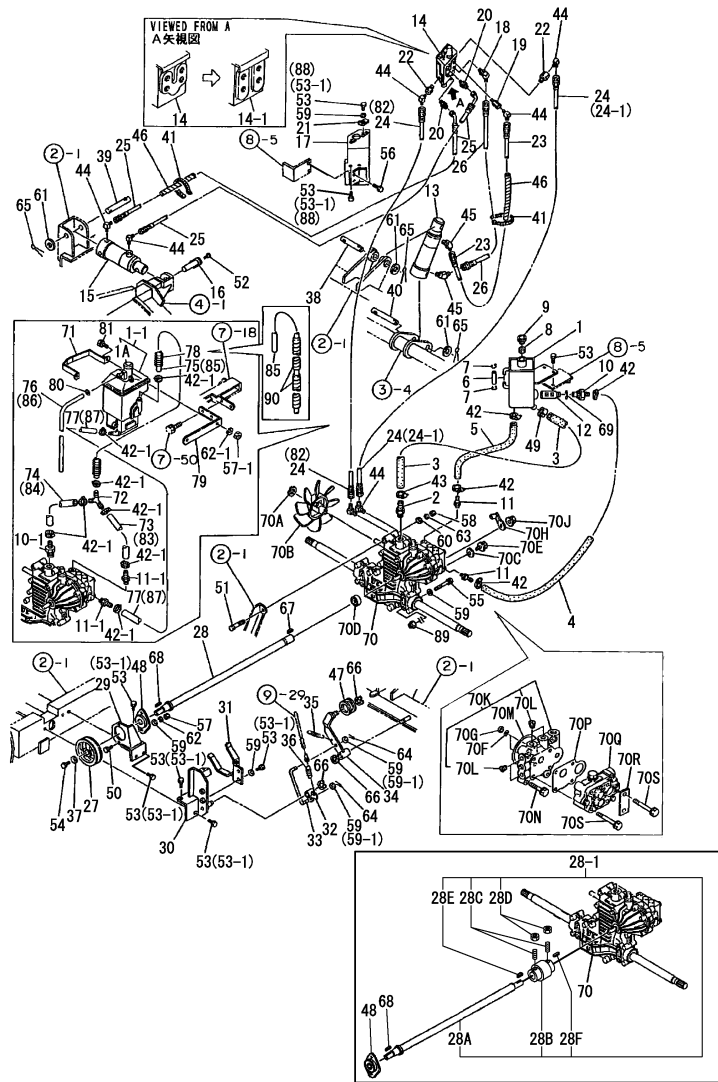
Remarks  
 (1)IT IS THE TRANSMISSION DISASSEMBLING LOAD.  
 (2)REF.NO.14 IS INTERCHANGEABLE WITH A SET OF 14-1 AND GROUP NO.8,REF. NOS.7-1,50-1.  
 (3)REF.NOS.51,58,60 AND 63 ARE A SET AND INTERCHANGEABLE WITH A SET OF 51-1 AND 58-1.

(A)=YSR1310HE  
 (B)=YSR1320  
 (C)=

(D)=  
 (E)=  
 (F)=

No.	Lev.	Parts No.	Description	Q'ty						I	R
				(A)	(B)	(C)	(D)	(E)	(F)		
			(B=F603197)								
54	1	1N1600-74520	BOLT 8X20 W/SP.WSHR.	1	1						
54-1	1	26106-080162	BOLT, M8X 16 PLATED		1						R
			(B=F603197)								
55	1	26013-080704	BOLT, M8X 70	4	4						
55-1	1	26106-080702	BOLT, M8X 70 PLATED		4						R
			(B=F603197)								
56	1	26013-100254	BOLT, M10X 25	2	2						
56-1	1	26013-100252	BOLT, M10X 25		2						R
			(B=F603197)								
57	1	26717-080002	NUT, M8	2							
57-1	1	26717-080002	NUT, M8	4	4						K
			(A=F305281)								
57-2	1	26367-080002	NUT, M8		4						R
			(B=F603197)								
58	1	26717-100002	NUT, M10	1	1						
58-1	1	26377-100002	NUT, M10		1						F 3
			(B=F603197)								
59	1	22137-080000	WASHER, 8	12	12						
59-1	1	22137-080000	WASHER, 8		2						K
			(B=F603197)								
60	1	22137-100000	WASHER, 10	1	1						Z
			(B=F603197)								
61	1	22137-200000	WASHER, 20	3	3						
62	1	22217-080000	WASHER, SPRING 8	2							
62-1	1	22217-080000	WASHER, SPRING 8	4	4						K
			(A=F305281)								
62-2	1	22217-080000	WASHER, SPRING 8		4						Z
			(B=F603197)								
63	1	22217-100000	WASHER, SPRING 10	1	1						Z
			(B=F603197)								
64	1	22417-250160	PIN, COTTER 2.5X16	2	2						
65	1	22417-400320	PIN, COTTER 4.0X32	3	3						
66	1	22242-000150	RING, 15	3	3						
67	1	1N1600-77520	KEY 5X5X20	1	1						Z
			(A=FXXXXXX) (B=FXXXXXX)								
68	1	22550-060250	KEY 6X6X25,FEATHER	1	1						
69	1	24311-000240	O-RING, 1AP24.0	1							Z
			(A=F305281)								
70	1	7N3130-50010	TRANSMISSION SB-6H	1	1						1
70A	2	192154-25310	CIRCLIP 15	1	1						
70B	2	1N3130-52510	FAN COMP.,COOLING	1	1						
70C	2	22190-100000	WASHER, SEAL 10	1	1						
70D	2	24421-153507	SEAL, OIL TC153507	1	1						
70E	2	26106-100162	BOLT, M10X 16 PLATED	1	1						
70F	2	24315-000080	O-RING, 1BP8.0	2	2						
70G	2	24372-000080	RING, BACK UP T2P8	2	2						
70H	2	1N3130-56260	LEVER CMP.,SD.CLUTCH	2	2						
70J	2	1E8135-56350	NUT M10,LOCK	2	2						
70K	2	1N3130-56510	PLATE ASSY	1	1						
70L	3	23871-010000	PLUG, R01	4	4						

Fig.6. HYDRAULIC PIPING

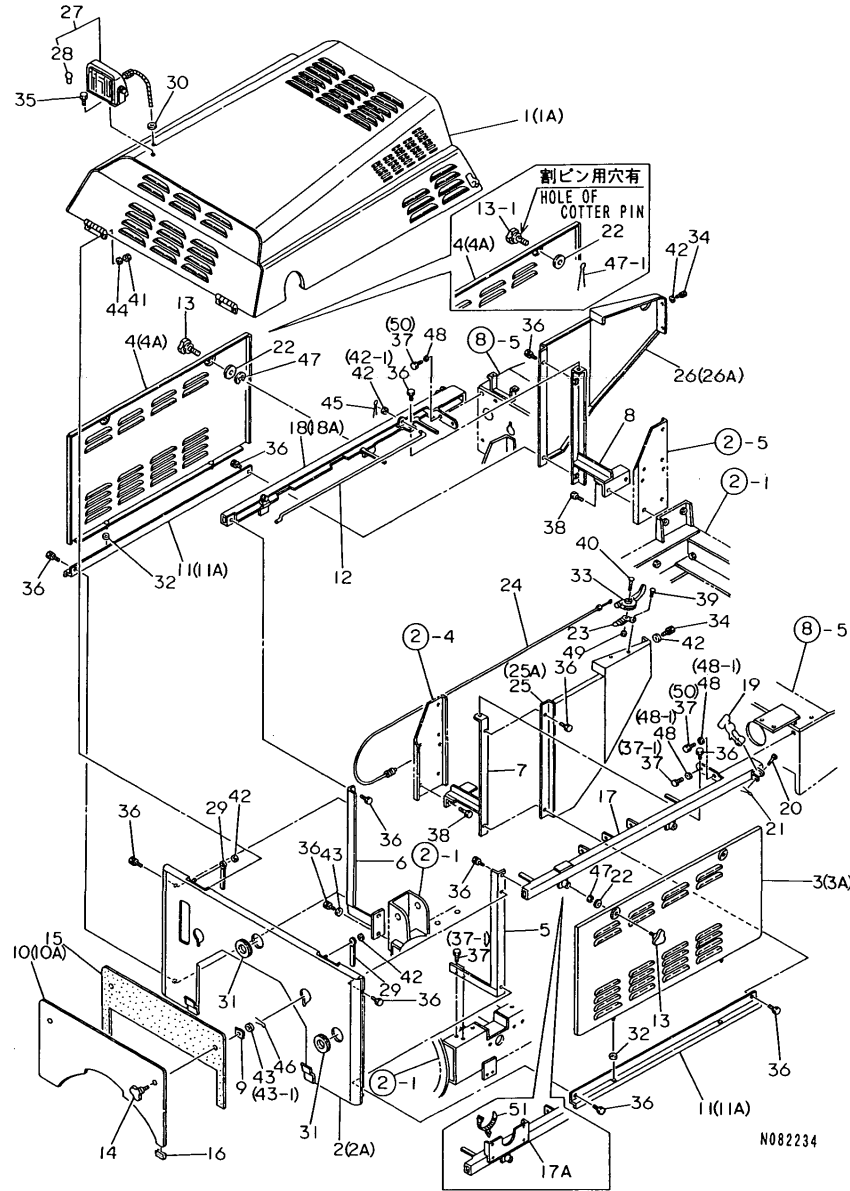


No.	Lev.	Parts No.	Description	Q'ty						I	R
				(A)	(B)	(C)	(D)	(E)	(F)		
70M	2	24321-000650	O-RING, 1AG65.0	1	1						
70N	2	26016-080352	BOLT, M8X 35	4	4						
70P	2	1C6290-11181	PACKING, PLATE	1	1						
70Q	2	1N3130-56710	PUMP CMP.,DBL.-ACTG	1	1						
70R	2	1N3130-56751	STAY	1	1						
70S	2	26016-080602	BOLT, M8X 60	4	4						
71	1	1N3151-69230	BAND	1	1						W
(A=F305281)											
72	1	1N3151-69160	Y-JOINT L30-13,HOSE	1	1						W
(A=F305281)											
73	1	1N3161-69130	HOSE 12X250	1							W
(A=F305281)											
74	1	1N3161-69140	HOSE 12X120	1							W
(A=F305281)											
75	1	1N3161-69150	HOSE 12X450	1							W
(A=F305281)											
76	1	1N3151-69220	HOSE 7.5X700,RUBBER	1							W
(A=F305281)											
77	1	1N3151-69170	HOSE 12X1200	1							W
(A=F305281)											
78	1	1N3151-69240	SPRING8XB200MA,GUARD	1	1						W
(A=F305281)											
78-1	1	1N3151-69240	SPRING8XB200MA,GUARD			1					Z
(B=F603197)											
79	1	1N3151-69250	BRACKET,FUEL TANK	1	1						W
(A=F305281)											
80	1	1N1600-78060	CLIP 10,HOSE	1	1						W
(A=F305281)											
81	1	26117-080202	BOLT M 8X 20 PLATED	2	2						W
(A=F305281)											
81-1	1	26106-080202	BOLT, M8X 20 PLATED			2					R
(B=F603197)											
82	1	1N1626-72001	HOSE 450,HYDRAULIC	1	1						W
(A=F305281)											
83	1	1N1600-78450	HOSE 13X250		1						
84	1	1N1600-78460	HOSE 13X120		1						
85	1	1N1600-78470	HOSE 13X450		1						
86	1	1N1600-78480	HOSE 8X700		1						
87	1	1N1600-78490	HOSE 13X1200		1						
87-1	1	1N1600-81730	HOSE 13X1100		1						R
(B=F603197)											
88	1	26106-080162	BOLT, M8X 16 PLATED		5						W
(B=F603197)											
89	1	26367-080002	NUT, M8		4						W
(B=F603197)											
90	1	1N1600-75360	PLUMMER 15X200		2						W
(B=F603197)											

Remarks  
 (1)IT IS THE TRANSMISSION DISASSEMBLING LOAD.  
 (2)REF.NO.14 IS INTERCHANGEABLE WITH A SET OF 14-1 AND GROUP NO.8,REF. NOS.7-1,50-1.  
 (3)REF.NOS.51,58,60 AND 63 ARE A SET AND INTERCHANGEABLE WITH A SET OF 51-1 AND 58-1.

Fig.7. COVERS

7. COVERS



Remarks  
 (1) REF. NOS.13 & 47 ARE A SET AND INTERCHANGEABLE WITH A SET OF REF. NOS.13-1 & 47-1.

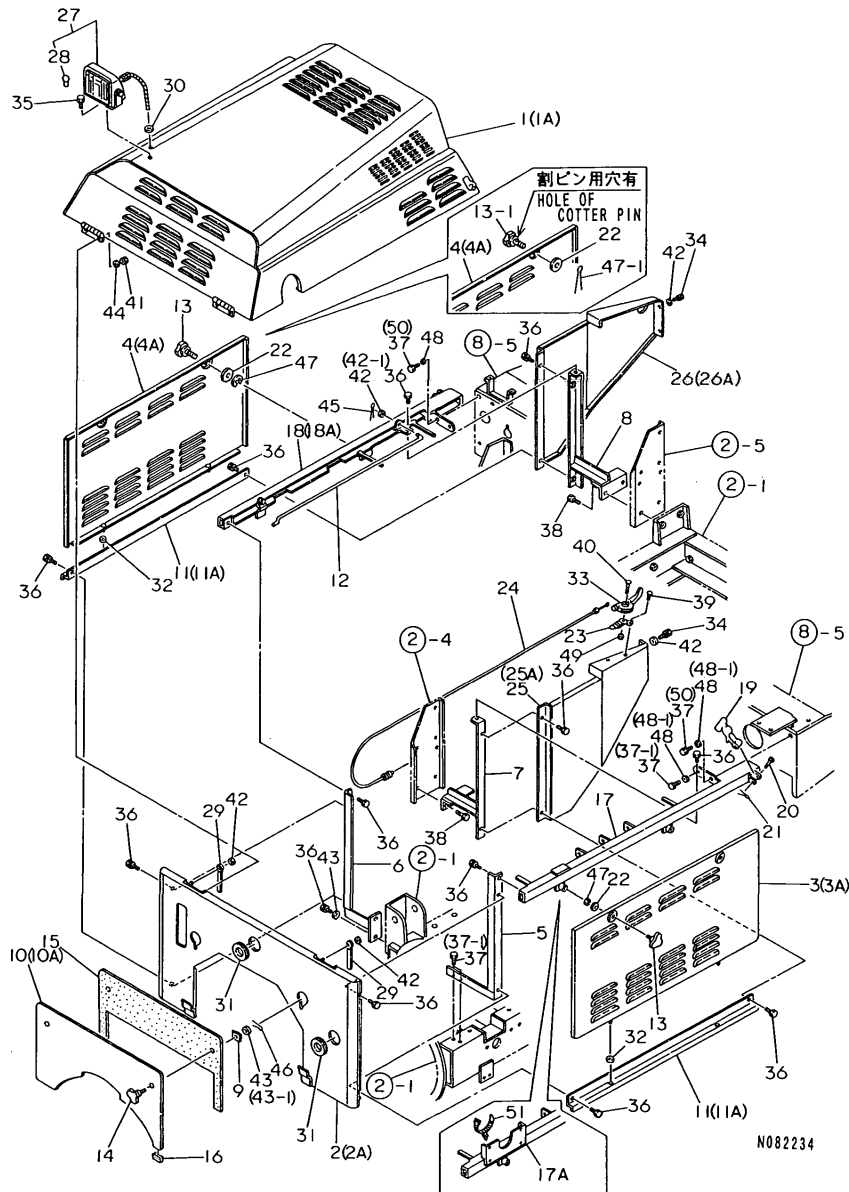
(A)=YSR1310HE  
 (B)=YSR1320  
 (C)=

(D)=  
 (E)=  
 (F)=

No.	Lev.	Parts No.	Description	Q'ty						I	R
				(A)	(B)	(C)	(D)	(E)	(F)		
1	1	1N3154-81000	HOOD	1							
1A	1	7N3154-81000	HOOD		1						
2	1	1N3154-82000	COVER COMP.,FRONT	1							
2-1	1	1N3154-82000-1	COVER COMP.,FRONT	1							S
		(A=F305281)									
2A	1	1N3154-82000-2	COVER COMP.,FRONT		1						
3	1	1N3154-83000	COVER L COMPL.,SIDE	1							
3-1	1	1N3154-83000-1	COVER L COMPL.,SIDE	1							S
		(A=F305281)									
3A	1	1N3154-83000-2	COVER L COMP.,SIDE		1						
3A-1	1	1N3154-83001	COVER L COMP.,SIDE		1						R
		(B=F603197)									
4	1	1N3154-84000	COVER R COMP.,SIDE	1							
4-1	1	1N3154-84000-1	COVER R COMP.,SIDE	1							S
		(A=F305281)									
4A	1	1N3154-84000-2	COVER R COMP.,SIDE		1						
5	1	1N3154-85000	STAY L CMP,FRNT.CVR.	1	1						
6	1	1N3154-86000	STAY R CMP,FRNT.CVR.	1	1						
7	1	1N3154-87000	STAY L CMP,REAR CVR.	1	1						
8	1	1N3154-88000	STAY R CMP,REAR CVR.	1	1						
9	1	1N3154-89000	NUT COMP.,CLAMP	2	2						
10	1	1N3154-89010	COVER,FRONT BELT	1							
10-1	1	1N3154-89010-1	COVER,FRONT BELT	1							S
		(A=F305281)									
10A	1	1N3154-89010-2	COVER,FRONT BELT		1						
11	1	1N3154-89020	STAY,UNDER	2							
11-1	1	1N3154-89020-1	STAY,UNDER	2							S
		(A=F305281)									
11A	1	1N3154-89020-2	STAY,UNDER		2						
12	1	1N3154-89030	STAY,BONNET	1	1						
13	1	1N3154-89040	THUMB SCREW 8X20	4	4						
13-1	1	1N3154-89041	THUMB SCREW 8X20		4						F 1
		(B=F603197)									
13-2	1	1N3164-89040	KNOB SCREW		4						R
		(B=F801771)									
14	1	1N3154-89050	THUMB SCREW 8X25	2	2						
15	1	1N3154-89060	RUBBER, ANTI VIBRAT.	1	1						
16	1	1N3154-89070	RUBBER 12X30,GROOVED	2	2						
17	1	1N3154-91000	BASE L COMP.,BONNET	1							
17A	1	7N3154-91000	PL.L AS.,BONNET BASE		1						
18	1	1N3154-92000	BASE R COMP.,BONNET	1							
18A	1	7N3154-92000	PL.R AS.,BONNET BASE		1						
19	1	1N1689-17030	CATCH,RUBBER HOOD	2	2						
20	1	1N1689-17040	PIN,ROUND HEAD	2	2						
21	1	1N1689-17050	PIN,COTTER	2	2						
22	1	22137-080000	WASHER, 8	4	4						
23	1	1N1677-59120	FITTINGS,THROTTLE LV	1	1						
24	1	1N1687-71000	WIRE,THROTTLE	1	1						
25	1	1N3157-81000	COVER L CMP,PANEL SD	1							
25-1	1	1N3157-81000-1	COVER L CMP,PANEL SD	1							S
		(A=F305281)									

Fig.7. COVERS

7. COVERS



Remarks  
 (1) REF. NOS.13 & 47 ARE A SET AND INTERCHANGEABLE WITH A SET OF REF. NOS.13-1 & 47-1.

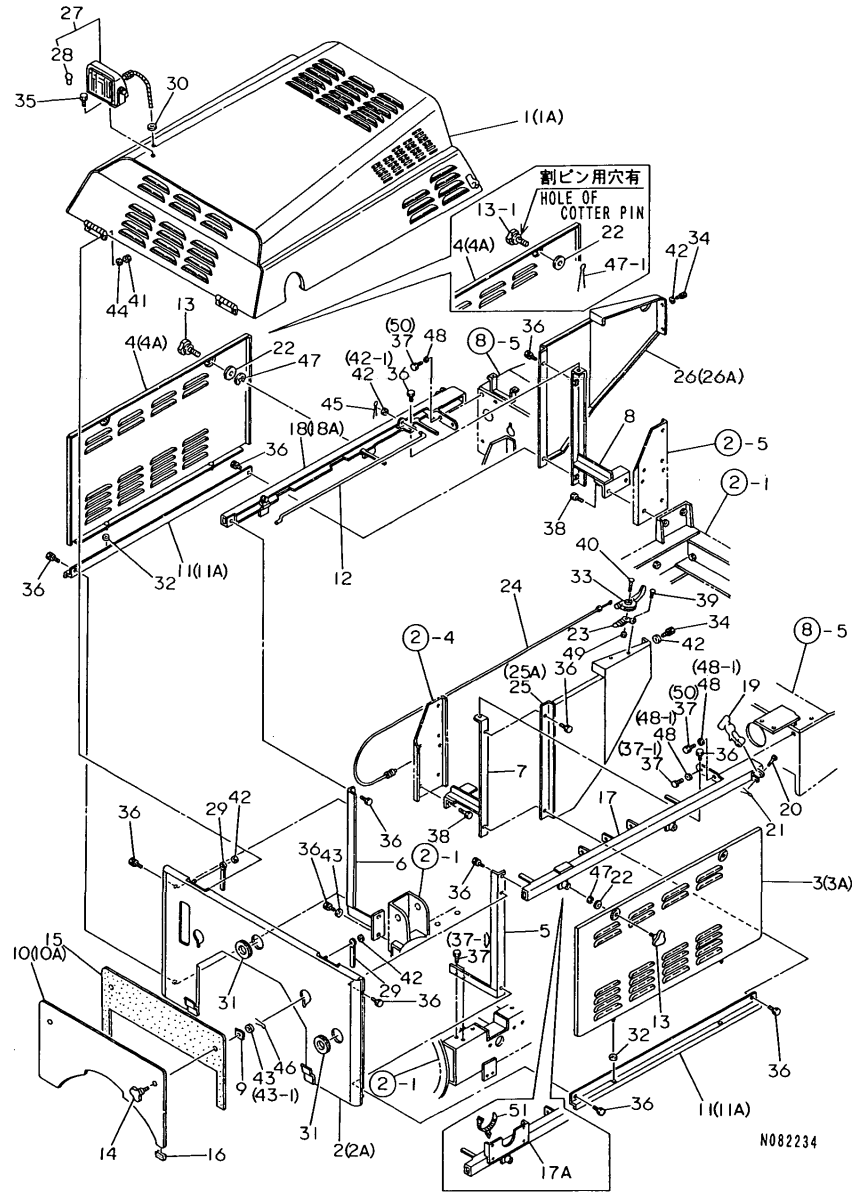
(A)=YSR1310HE  
 (B)=YSR1320  
 (C)=

(D)=  
 (E)=  
 (F)=

No.	Lev.	Parts No.	Description	Q'ty						I	R
				(A)	(B)	(C)	(D)	(E)	(F)		
25A	1	1N3157-81000-2	COVER L CMP,PANEL SD		1						
26	1	1N3157-82000	COVER R CMP,PANEL SD	1							
26-1	1	1N3157-82000-1	COVER R CMP,PANEL SD	1							S
(A=F305281)											
26A	1	1N3157-82000-2	COVER R CMP,PANEL SD		1						
27	1	1N1678-36000	HEADLIGHT	1	1						
27-1	1	1N3248-34000	LAMP S,WORKING		1						N
(B=F603197)											
28	2	1N1678-36100	BULB 12V-15W	1	1						
28-1	2	1N3248-34200	BULB 12V-23W		1						S
(B=F603197)											
29	1	1N1600-75120	CLAMP 8X80,CORD	2	2						
30	1	1N1600-74140	BUSH BSB-21,RUBBER	1	1						
31	1	1N1600-77670	BUSH BW-32-2,RUBBER	2	2						
32	1	1N1600-75240	BUSH B-6-3,RUBBER	4	4						
33	1	1N1600-75790	LEVER, THROTTLE	1	1						
34	1	26013-060164	BOLT M 6X 16	4	4						
34-1	1	26106-060162	BOLT, M6X 16 PLATED		4						R
(B=F603197)											
35	1	26013-080124	BOLT M 8X 12	1	1						
35-1	1	26106-080122	BOLT, M8X 12 PLATED		1						R
(B=F603197)											
36	1	26013-080164	BOLT M 8X 16	14	14						
36-1	1	26106-080162	BOLT, M8X 16 PLATED		14						R
(B=F603197)											
37	1	26013-080204	BOLT M 8X 20	6							
37-1	1	26013-080204	BOLT M 8X 20	3	3						K
(A=F305281)											
37-2	1	26106-080202	BOLT, M8X 20 PLATED		3						R
(B=F603197)											
38	1	26013-100254	BOLT, M10X 25	4	4						
38-1	1	26013-100252	BOLT, M10X 25		4						R
(B=F603197)											
39	1	26022-060162	SCREW, M6X16	2	2						
39-1	1	26106-060162	BOLT, M6X 16 PLATED		2						R
(B=F603197)											
40	1	26557-050302	SCREW, M5X30	1	1						
41	1	26707-060002	NUT, M6	4	4						
41-1	1	26367-060002	NUT, M6		4						R
(B=F603197)											
42	1	22137-060000	WASHER, 6	7	7						
42-1	1	22137-060000	WASHER, 6		1						K
(B=F603197)											
43	1	22137-080000	WASHER, 8	4	4						
43-1	1	22137-080000	WASHER, 8		2						K
(B=F603197)											
44	1	22217-060000	WASHER, SPRING 6	4	4						Z
(B=F603197)											
45	1	22417-200120	COTTER PIN 2.0X12	1	1						
46	1	22417-250160	PIN, COTTER 2.5X16	2	2						
47	1	22272-000060	RING, E- 6	4	4						

Fig.7. COVERS

7. COVERS



(A)=YSR1310HE  
(B)=YSR1320  
(C)=

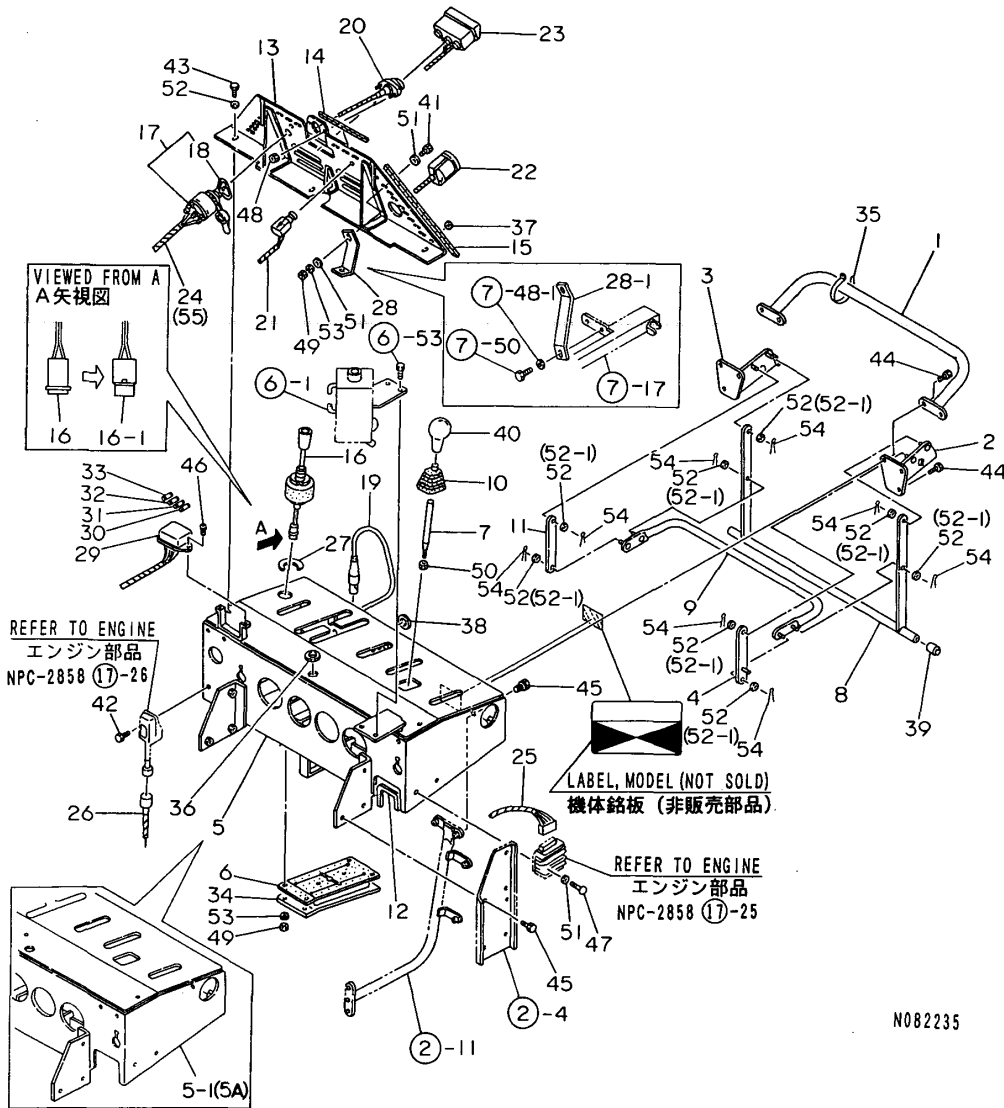
(D)=  
(E)=  
(F)=

No.	Lev.	Parts No.	Description	Qty						I	R	
				(A)	(B)	(C)	(D)	(E)	(F)			
47-1	1	22417-250160 (B=F603197)	PIN, COTTER 2.5X16		4						F	1
48	1	1N1600-77260	WASHER 8X25X2.3,CIRC		4							
48-1	1	1N1600-77260 (A=F305281)	WASHER 8X25X2.3,CIRC	2	2							K
48-2	1	22157-080000 (B=F603197)	WASHER, 8		2							R
49	1	26707-050002	NUT, M5	1	1							
50	1	26013-080254 (A=F305281)	BOLT M 8X 25	3	3							W
50-1	1	26106-080252 (B=F603197)	BOLT, M8X 25 PLATED		3							R
51	1	1N1600-81590	CLIP 1-19P7,CABLE		2							

Remarks  
(1) REF. NOS.13 & 47 ARE A SET AND INTERCHANGEABLE WITH A SET OF REF. NOS.13-1 & 47-1.

Fig.8. PANEL & HANDLE

8. PANEL & HANDLE



(A)=YSR1310HE  
(B)=YSR1320  
(C)=

(D)=  
(E)=  
(F)=

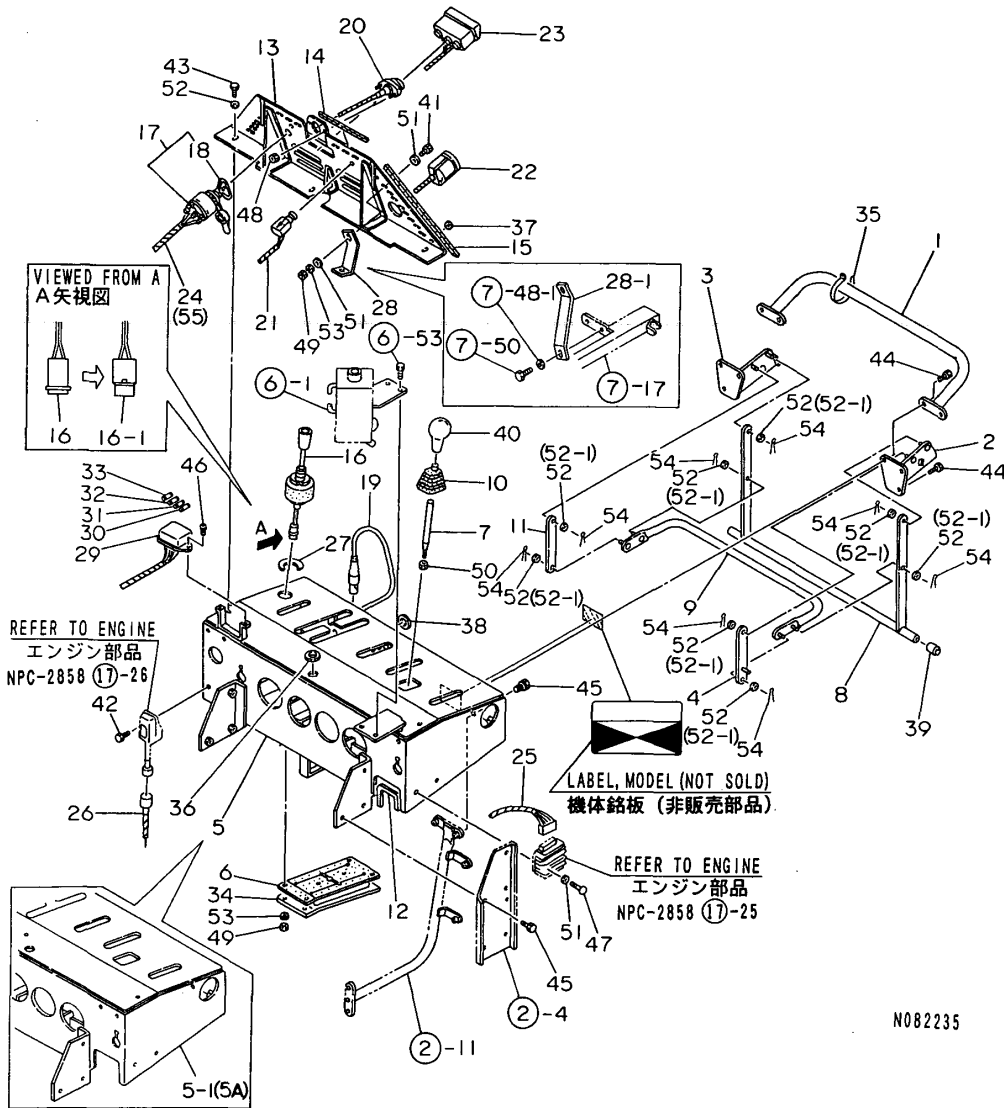
No.	Lev.	Parts No.	Description	Qty						I	R
				(A)	(B)	(C)	(D)	(E)	(F)		
1	1	1N3077-11000	HANDLE COMPL.	1	1						
2	1	1N3077-22000	BRACKET L,EMG.STP.LV	1	1						
3	1	1N3077-23000	BRACKET R,EMG.STP.LV	1	1						
4	1	1N3077-26000	LINK L CMP,STP.LEVER	1	1						
5	1	1N3157-21000	PANEL ASSY, CONTROL	1							
5-1	1	1N3157-21001	PANEL ASSY, CONTROL	1							S
(A=F305281)											
5A	1	7N3157-21000	PANEL ASSY, CONTROL		1						
6	1	1N3157-29010	SERVER,H.S.T.RUBBER	1	1						
7	1	1N1677-59111	LEVER,HYRAULIC CONT.	1	1						
7-1	1	1N3157-59110	LEVER,HYRAULIC CONT.		1						S 1
(B=F603197)											
8	1	1N3077-62000	LEVER CMP,EMERG.STOP	1	1						
9	1	1N3077-63000	GUARD COMP.,UPPER	1	1						
10	1	1N3077-69090	BOOT,LEVER	1	1						
11	1	1N3077-69130	LINK,STOP LEVER	1	1						
12	1	1N3077-69140	RUBBER 12X120,CHANNL	1	1						
13	1	1N3158-21000	PANEL COMP,INDICATOR	1	1						
14	1	1N3158-29020	RUBBER 8X155,GROOVED	2	2						
15	1	1N3158-29030	RUBBER 8X263,GROOVED	2	2						
16	1	1N1688-31000	SWITCH,LEVER	1	1						
16-1	1	1N1688-31001	SWITCH,LEVER		1						S
(B=F502343)											
17	1	1N1868-31000	SWITCH,MAIN	1	1						
18	2	123482-91291	KEY	1	1						
19	1	1N1938-31000	SWITCH,EMRGNCY.STOP	1	1						
20	1	1N3158-31000	LIGHT,PANEL	1	1						
21	1	1N1678-32000	SWITCH,LIGHTING	1	1						
22	1	1N3158-41000	METER, HOUR	1	1						
23	1	1N1678-41000	LAMP,3-L .IN ICATOR	1	1						
24	1	1N3158-51000	HARNESS (A), WIRE	1							
25	1	1N3158-52000	HARNESS (B), WIRE	1	1						
26	1	1N3158-55000	HARNESS E,WIRE	1	1						
27	1	1N3157-59080	SPACER,SHOOTER LEVER	1							Z
(A=F305281)											
28	1	1N3158-29040	STAY,INDICATOR PANEL	1							
28-1	1	1N3158-29041	STAY,INDICATOR PANEL	1	1						S
(A=F305281)											
29	1	1N3158-58000	BOX, FUSE	1	1						
30	1	1N1600-75410	FUSE 5A	1							
31	1	1N1600-75420	FUSE 10A	1	1						
32	1	1N1600-77680	FUSE 15A	1	1						
33	1	1N1600-75430	FUSE 30A,TUBE	1	2						
34	1	1N3157-29020	CLAMP,H.S.T.RUBBER	1	1						
35	1	1N1600-77210	TIE RF140,REPEAT	1	1						
36	1	1N1600-77690	BUSH BW-14-2,RUBBER	1							Z
(A=F402221)											
37	1	1N1600-75240	BUSH B-6-3,RUBBER	1	1						
38	1	1N1600-77340	BUSH SG-30B,FLM.RBRR	1	1						
39	1	1N1600-77700	FOOT C-31-4,RUBBER	2	2						
40	1	1N1600-77710	GRIP A10,LEVER	1	1						

Remarks

(1) SCREW=M8(REF. NO.7),M10(REF.

Fig.8. PANEL & HANDLE

8. PANEL & HANDLE



N082235

(A)=YSR1310HE  
(B)=YSR1320  
(C)=

(D)=  
(E)=  
(F)=

No.	Lev.	Parts No.	Description	Q'ty						I	R
				(A)	(B)	(C)	(D)	(E)	(F)		
41	1	26117-060162	BOLT M 6X 16 PLATED	1							
41-1	1	26117-060202	BOLT M 6X 20	1	1						N
(A=F402221)											
41-2	1	26106-060202	BOLT, M6X 20 PLATED (B=F603197)		1						R
42	1	26013-060164	BOLT M 6X 16	2	2						
42-1	1	26106-060162	BOLT, M6X 16 PLATED (B=F603197)		2						R
43	1	26013-080164	BOLT M 8X 16	3	3						
43-1	1	26106-080162	BOLT, M8X 16 PLATED (B=F603197)		3						R
44	1	1N1600-74610	BOLT 8X25	6	6						
44-1	1	26106-080252	BOLT, M8X 25 PLATED (B=F603197)		6						R
45	1	26013-100204	BOLT M10X 20	10	10						
45-1	1	26013-100202	BOLT, M10X 20 (B=F603197)		10						R
46	1	26022-050162	SCREW, M5X16	2	2						
46-1	1	26013-050162	BOLT, M5X 16 (B=F603197)		2						R
47	1	26022-060302	SCREW M 6X 30	2	2						
47-1	1	26106-060252	BOLT, M6X 25 PLATED (B=F603197)		2						R
48	1	26717-040002	NUT, M4	2	2						
49	1	26707-060002	NUT, M6	7	7						
49-1	1	26367-060002	NUT, M6 (B=F603197)		7						R
50	1	26717-080002	NUT, M8	1	1						
50-1	1	26717-100002	NUT, M10 (B=F603197)		1						S
51	1	22137-060000	WASHER, 6 (B=F603197)	4	4						Z
52	1	22137-080000	WASHER, 8	11	11						
52-1	1	22137-080000	WASHER, 8 (B=F603197)		8						K
52-2	1	22137-080000	WASHER, 8 (B=F801771)		8						Z
53	1	22217-060000	WASHER, SPRING 6 (B=F603197)	7	7						Z
54	1	22417-250160	PIN, COTTER 2.5X16	8	8						
55	1	1N3158-51001	HARNESS (A), WIRE		1						

Remarks

(1) SCREW=M8(REF. NO.7),M10(REF.

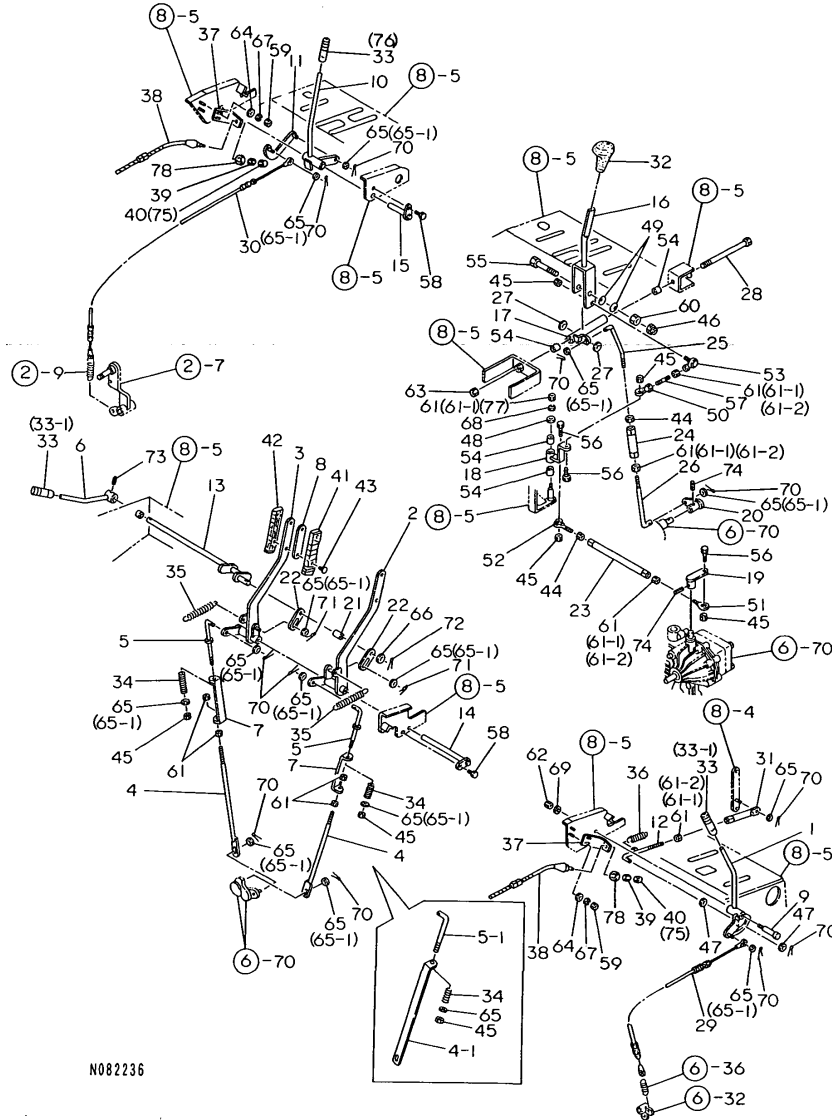
N:Old  $\xrightarrow{\text{Yes}}$  New, Q:Old  $\xrightarrow{\text{No}}$  New, R:Old  $\xrightarrow{\text{Yes}}$  New, S:Old  $\xrightarrow{\text{No}}$  New, W:Add, Z:Discontinued, F:Interchangeable by set, K:Q'ty Change

Fig.9. CONTROL LEVER

(A)=YSR1310HE  
(B)=YSR1320  
(C)=

(D)=  
(E)=  
(F)=

9. CONTROL LEVER



N082236

Remarks

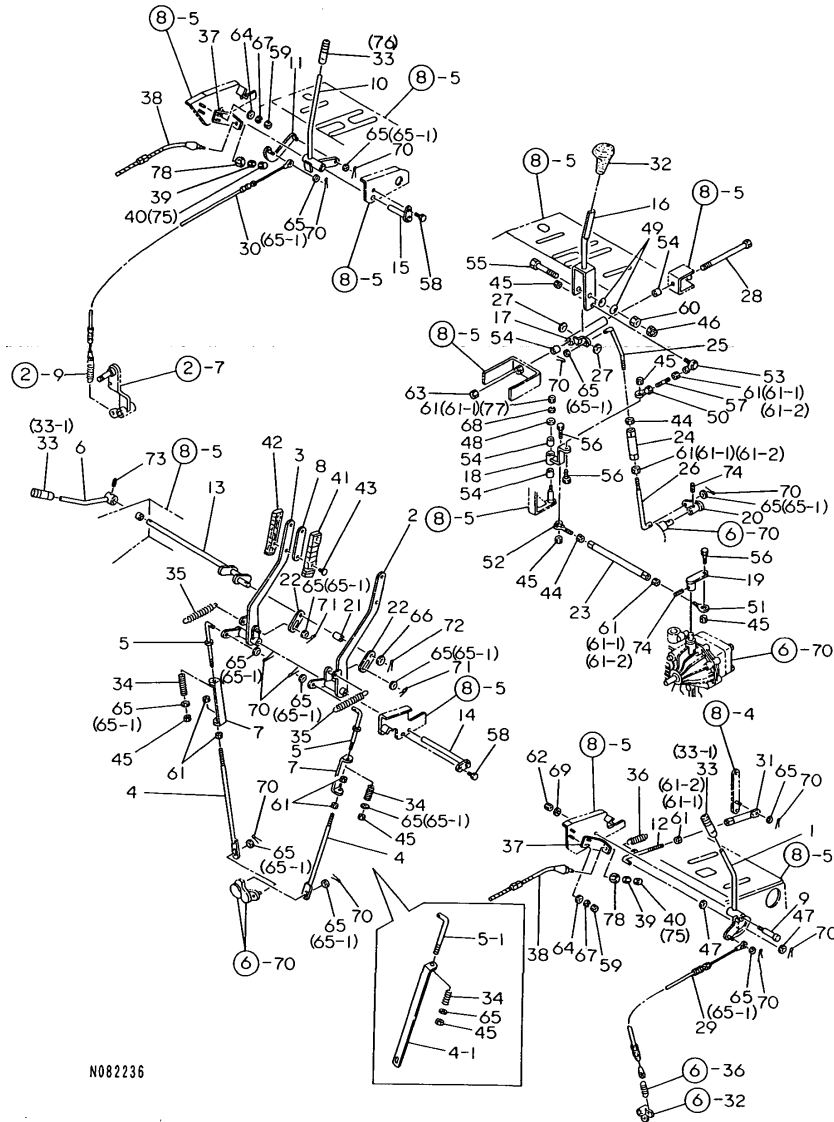
- (1) A SET OF REF. NOS.4,5 & 7 IS INTERCHANGEABLE WITH A SET OF REF. NOS.4-1 & 5-1.
- (2) A SET OF REF. NOS.8,41 & 42 IS INTERCHANGEABLE WITH A SET OF REF. NOS.41-1 & 42-1.

No.	Lev.	Parts No.	Description	Qty						I	R
				(A)	(B)	(C)	(D)	(E)	(F)		
1	1	1N3157-31000	LEVER CMP,TRVL.CLTCH	1	1						
2	1	1N3157-32000	LEVER L CMP,SD.CLTCH	1	1						
3	1	1N3157-33000	LEVER R CMP,SD.CLTCH	1	1						
4	1	1N3157-34000	ROD 305 CMP,SD.CLTCH		2						
4-1	1	1N3157-39040	ROD 400,SIDE CLUTCH		2						F 1
(A=F201746)											
5	1	1N3157-35000	ROD 125 CMP,SD.CLTCH		2						
5-1	1	1N3157-39030	ROD 135,SIDE CLUTCH		2						F 1
(A=F201746)											
6	1	1N1867-37000	LEVER CMP,PARK.BRAKE	1	1						
7	1	1N3157-39010	SPRING HOLDER		2						Z
(A=F201746)											
8	1	1N3157-39020	SPACER		2						Z
(B=F603197)											
9	1	1N3077-39050	BOLT M10	1	1						
10	1	1N3157-41000	LEVER CMP,AGR.CLUTCH	1	1						
11	1	1N3157-42000	LINK 95 CMP,AGR.CLTC	1	1						
12	1	1N3157-51000	ROD COMP.,ADJUSTING	1	1						
13	1	1N3157-52000	ARM, BRAKE	1	1						
14	1	1N3157-53000	PIN 175 COMP.,LEVER	1	1						
15	1	1N3157-54000	PIN 70 COMP.,LEVER	1	1						
16	1	1N3157-55000	LEVER CMP,HS.TRANSM.	1	1						
17	1	1N3157-56000	BOSS,HS.TRANSM.LEVER	1	1						
18	1	1N3157-57000	CAM CMP,HS.TRANSMIS.	1	1						
19	1	1N3157-58000	ARM COMP.,H.S.T.	1	1						
20	1	1N3157-59000	ARM COMP.,SUB-CHANGE	1	1						
21	1	1N3157-59020	COLLAR 12X20	1	1						
22	1	1N3157-59030	LINK,BRAKE	2	2						
23	1	1N3157-59040	LINK 235	1	1						
24	1	1N3157-59050	LINK 100	1	1						
25	1	1N3157-59060	ROD,SUB-CHANGE	1	1						
26	1	1N3157-59070	ROD 170	1	1						
27	1	1N3077-59040	WASHER 14X30X3,THRST	2	2						
28	1	1N3157-61000	SHAFT CMP,H.S.T.LVR.	1	1						
29	1	1N3157-71000	WIRE,CLUTCH	1	1						
30	1	1N3157-72000	AUGER CLUTCH WIRE	1	1						
31	1	1N1833-39030	ROD 105,CHUTE LINK	1	1						
32	1	1N3067-59910	GRIP,CHANGE LEVER	1	1						
33	1	1N3077-69020	GRIP,CONT.LEVER RED	3	3						
33-1	1	1N3077-69020	GRIP,CONT.LEVER RED		2						K
(B=F502384)											
34	1	1N3079-16010	SPRING 14X50,COILED	2	2						
35	1	1N1599-16040	SPRING 16.5X125,COIL	2	2						
36	1	1N1599-16030	SPRING 13.4X70,COIL.	1	1						
37	1	1N3078-19011	BRACKET, SWITCH	2	2						
38	1	1N1600-70180	SWITCH,NEUTRAL	2	2						
39	1	1N3068-39010	NUT	2	2						
40	1	1N3068-39020	CAP,RUBBER	2							
41	1	1N3077-69030	GRIP A,CLUTCH LEVER	2	2						
41-1	1	1N3247-69030	GRIP A,CLUTCH LEVER		2						F 2
(B=F603197)											



Fig.9. CONTROL LEVER

9. CONTROL LEVER



N082236

Remarks

- (1) A SET OF REF. NOS.4,5 & 7 IS INTERCHANGEABLE WITH A SET OF REF. NOS.4-1 & 5-1.
- (2) A SET OF REF. NOS.8,41 & 42 IS INTERCHANGEABLE WITH A SET OF REF. NOS.41-1 & 42-1.

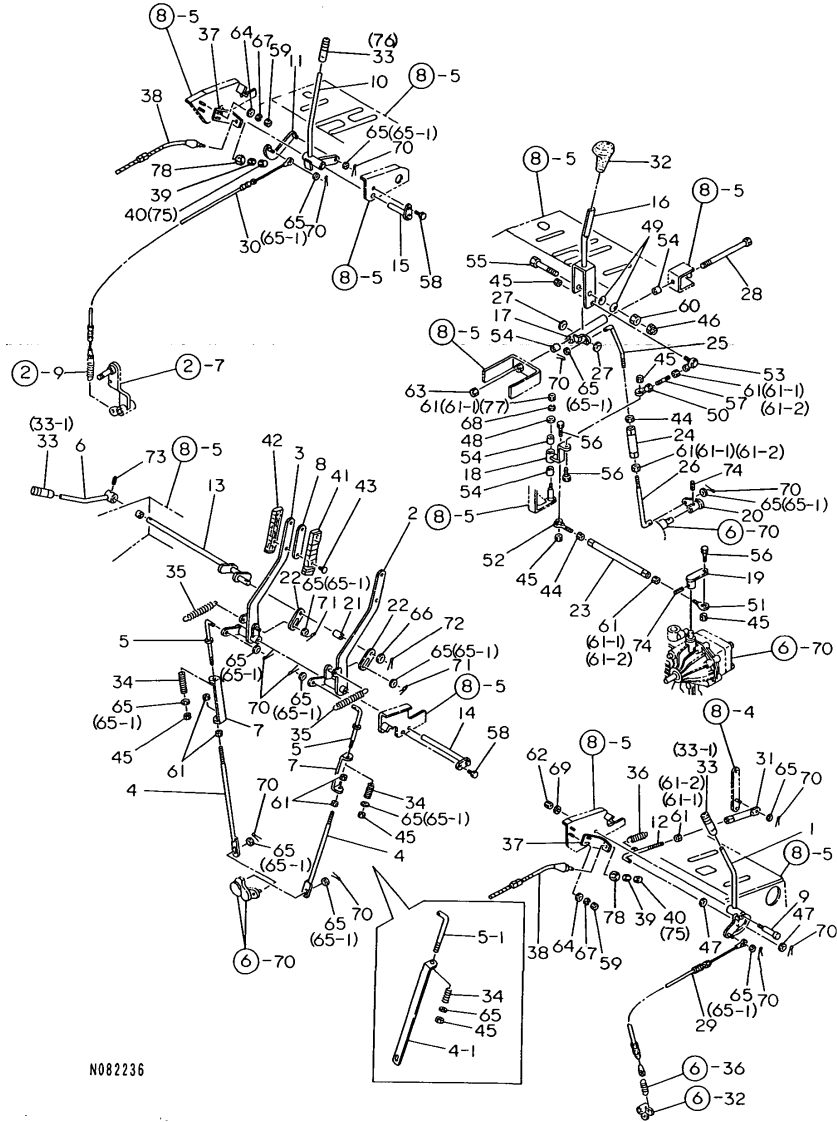
(A)=YSR1310HE  
(B)=YSR1320  
(C)=

(D)=  
(E)=  
(F)=

No.	Lev.	Parts No.	Description	Q'ty						I	R
				(A)	(B)	(C)	(D)	(E)	(F)		
42	1	1N3077-69040	GRIP B,CLUTCH LEVER	2	2						
42-1	1	1N3247-69040	GRIP B,CLUTCH LEVER		2						F 2
(B=F603197)											
43	1	1N3077-69060	SCREW M4X20	4	4						
44	1	1N1600-77250	NUT 8,SM.LEFT HAND	2	2						
45	1	1N1600-74790	U-NUT 8	6	6						
46	1	1N1600-77090	U-NUT M14	1	1						
47	1	1N1600-77260	WASHER 8X25X2.3,CIRC	2	2						
47-1	1	22157-080000	WASHER, 8		2						R
(B=F603197)											
48	1	1N1600-77270	WASHER 8X25X3.2,RD	1	1						
48-1	1	22157-080000	WASHER, 8		1						R
(B=F603197)											
49	1	1N1600-77300	SPRING H14,BELLEVIL.	2	2						
50	1	1N1600-77370	END SFR1-8,ROD	1	1						
51	1	1N1600-77380	END SMR1-8,ROD	1	1						
52	1	1N1600-77390	END SMR1-8L,ROD	1	1						
53	1	1N1600-77410	ELBOW LHS A8	1	1						
54	1	1N1600-77420	LINER ML1215.M	4	4						
54-1	1	1N1600-80580	BUSH BM1215FB		4						R
(B=F603197)											
55	1	1N1600-77490	BOLT M14X80	1	1						
56	1	1N1600-74850	BOLT 8X25	3	3						
56-1	1	26106-080252	BOLT, M8X 25 PLATED		3						R
(B=F603197)											
57	1	1N1600-77720	STUD 8X35	1	1						
58	1	26013-060164	BOLT M 6X 16	2	2						
58-1	1	26106-060162	BOLT, M6X 16 PLATED		2						R
(B=F603197)											
59	1	26707-060002	NUT, M6	4	4						
59-1	1	26367-060002	NUT, M6		4						R
(B=F603197)											
60	1	26707-140002	NUT, M14	1	1						
61	1	26717-080002	NUT, M8	9							
61-1	1	26717-080002	NUT, M8	5	5						K
(A=F201746)											
61-2	1	26717-080002	NUT, M8		4						K
(B=F603197)											
62	1	26717-100002	NUT, M10	1	1						
63	1	1N1600-74580	NUT 12	1	1						
63-1	1	26717-120002	NUT, M12		1						R
(B=F603197)											
64	1	22137-060000	WASHER, 6	4	4						Z
(B=F603197)											
65	1	22137-080000	WASHER, 8	14	14						
65-1	1	22137-080000	WASHER, 8		13						K
(B=F801771)											
66	1	22137-120000	WASHER, 12	1	1						
67	1	22217-060000	WASHER, SPRING 6	4	4						Z
(B=F603197)											
68	1	22217-080000	WASHER, SPRING 8	1	1						Z

Fig.9. CONTROL LEVER

9. CONTROL LEVER



N082236

Remarks

- (1) A SET OF REF. NOS.4,5 & 7 IS INTERCHANGEABLE WITH A SET OF REF. NOS.4-1 & 5-1.
- (2) A SET OF REF. NOS.8,41 & 42 IS INTERCHANGEABLE WITH A SET OF REF. NOS.41-1 & 42-1.

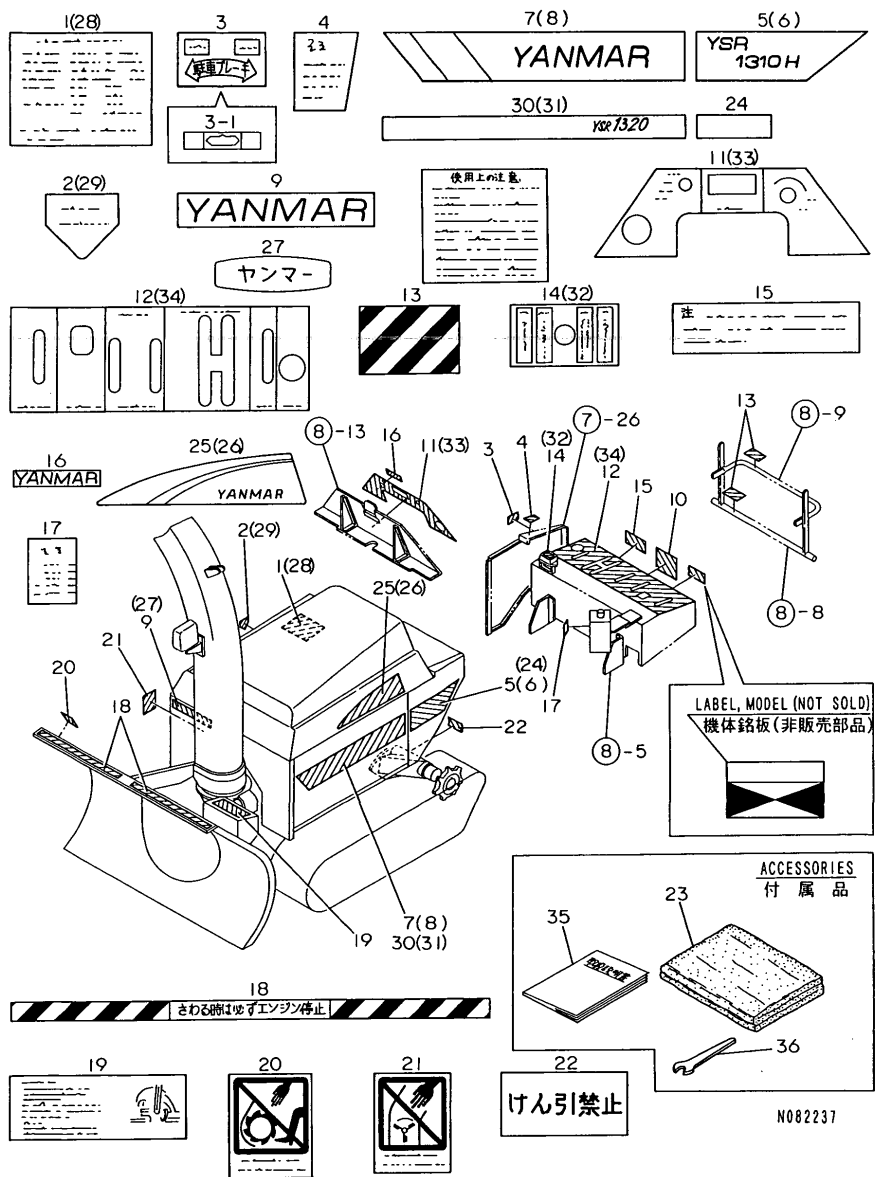
(A)=YSR1310HE  
(B)=YSR1320  
(C)=

(D)=  
(E)=  
(F)=

No.	Lev.	Parts No.	Description	Q'ty						I	R
				(A)	(B)	(C)	(D)	(E)	(F)		
			(B=F603197)								
69	1	22217-100000	WASHER, SPRING 10		1						
70	1	22417-250160	PIN, COTTER 2.5X16	11	11						
71	1	1N1600-72230	PIN 8,SNAP		2						
71-1	1	22372-080000	PIN, SNAP 8			2					R
			(B=F603197)								
72	1	1N1600-72160	PIN 3X20,COTTER		1						
73	1	22351-050025	PIN, SPRING 5.0X25		1						
74	1	22351-060025	PIN, SPRING 6.0X25	2	2						
75	1	1N3248-39010	M-S005370 Y NYG			2					
76	1	1N3247-69020	GRIP,CONTROL LEVER			1					W
			(B=F502384)								
77	1	26367-080002	NUT, M8			1					W
			(B=F603197)								
78	1	22137-100000	WASHER, 10			2					W
			(B=F801771)								

Fig.10. LABELS & ACCESSORIES

10. LABELS & ACCESSORIES



(A)=YSR1310HE  
(B)=YSR1320  
(C)=

(D)=  
(E)=  
(F)=

No.	Lev.	Parts No.	Description	Q'ty						I	R
				(A)	(B)	(C)	(D)	(E)	(F)		
1	1	1N3157-99080	MARK,MAINTENANCE	1							
2	1	1N1689-18040	MARK,OIL SUPPLY	1							
3	1	1N1869-18090	MARK,PARKING BRAKE	1	1						
3-1	1	1N3167-99191 (B=F502384)	MARK,PARKING BRAKE		1						S
4	1	1N3157-99120	MARK,PARKING CAUTION	1	1						
5	1	1N3157-99030	MARK L,MODEL	1							
6	1	1N3157-99040	MARK R,MODEL	1							
7	1	1N3077-99050	MARK L YANMAR,SIDE	1							
8	1	1N3077-99060	MARK L YANMAR,SIDE	1							
9	1	1N1679-18260	MARK B Y	1							
10	1	1N1867-99010	MARK,SMALL CAUTION	1							
11	1	1N3157-99010	MARK,INDICATOR PANEL	1							
12	1	1N3157-99020	PANEL MARK	1							
13	1	1N1937-99070	MARK,BLK.& YEL.STRP.	4	4						
14	1	1N3157-99070	LABEL, FUSE BOX	1							
15	1	1N3157-99130	LABEL, CAUTION	1							
16	1	1N3157-99110 (B=F502343)	MARK 14X92,YANMAR	1	1						Z
17	1	1N3157-99090 (A=F305281)	MARK,OIL GAUGE	1							Z
18	1	1N1837-99030 (B=F502343)	MARK,SNOW REM.CAUTN	2	2						Z
19	1	1N1937-99100	MARK,SAFE.BOLT CHG.	1	1						
20	1	1N1937-99120	MARK,AUGER SAFETY	1							
21	1	1N1869-18060	MARK,SAFETY	1							
22	1	1N3157-99100	MARK,NO PULLING	2	2						
23	1	1N1637-83001	COVER,OPR.SEAT	1	1						
23-1	1	1N3159-81000 (B=F705301)	COVER,SEET		1						S
24	1	1N3157-99050	MARK,REAR SIDE		2						
25	1	1N3167-99210	MARK L,YANMAR		1						
26	1	1N3167-99220	MARK R YANMAR		1						
27	1	1N3247-99120	MARK 163X50,YANMAR		1						
28	1	1N3157-99081	MARK,MAINTENANCE		1						
29	1	1N3247-99110	MARK,OIL FILLER		1						
30	1	1N3157-99031	MN2713801 Y QY		1						
31	1	1N3157-99041	MN3713800		1						
32	1	1N3157-99071	LABEL, FUSE BOX		1						
33	1	1N3157-99010	MARK,INDICATOR PANEL		1						
34	1	1N3157-99021	PANEL MARK		1						
35	1	1N3159-19011	MANUAL,OPERATION		1						
36	1	1N1600-80600 (B=F603197)	WRENCH 13		1						W

Remarks  
\* REFER TO GROUP 11 FOR SAFETY LABELS

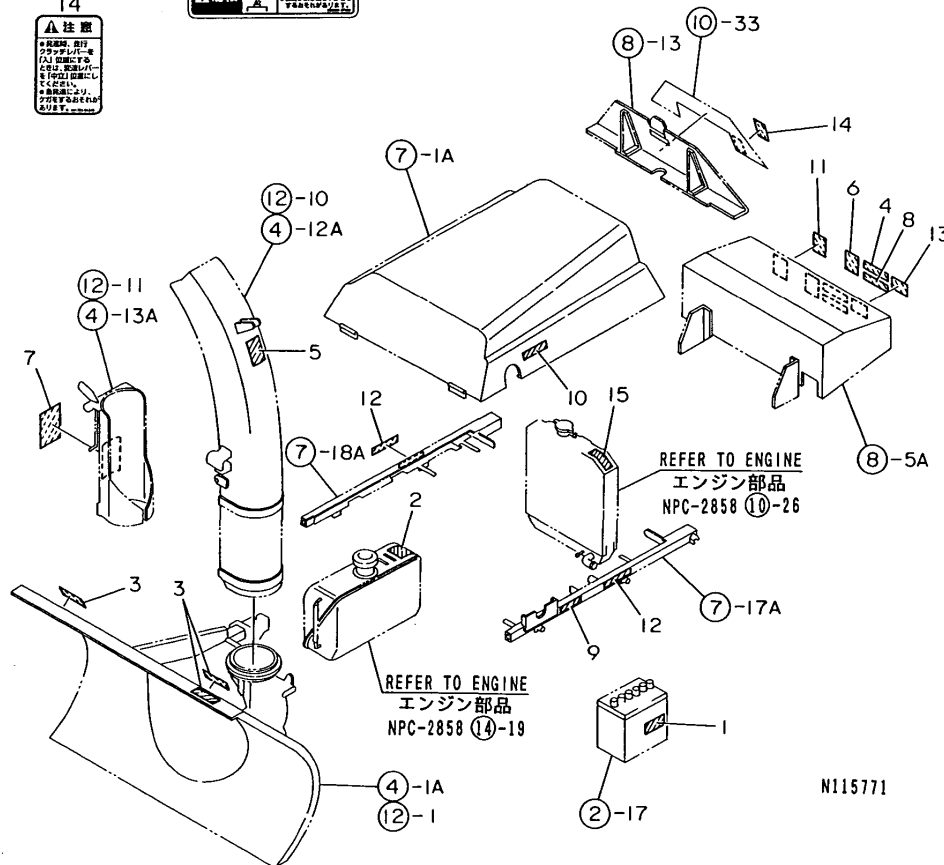
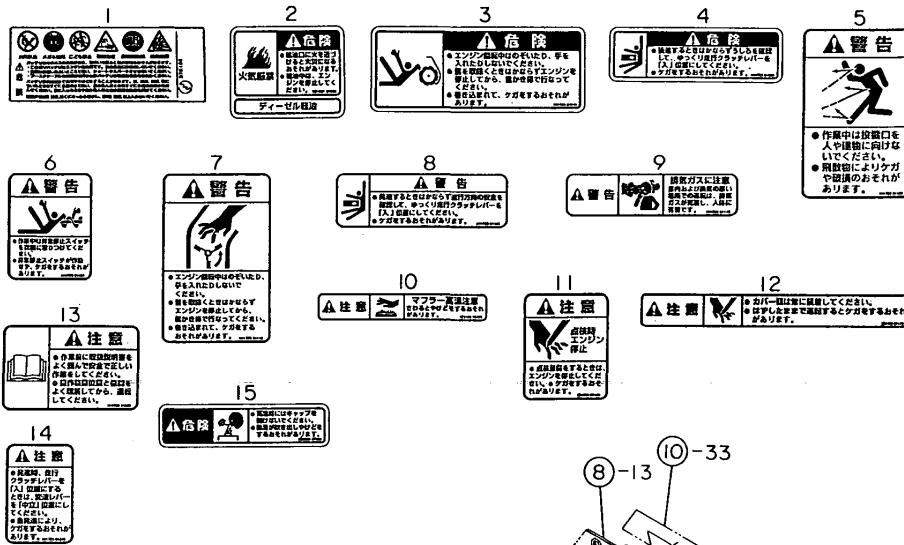
Fig.11. LABEL (SAFETY (ADDNL.ITEM))

(A)=YSR1310HE  
(B)=YSR1320  
(C)=

(D)=  
(E)=  
(F)=

11. LABEL (SAFETY (ADDNL.ITEM))

No.	Lev.	Parts No.	Description	Qty						I	R
				(A)	(B)	(C)	(D)	(E)	(F)		
1	1	1N1600-78390	LABEL,BATTERY DANGER		1						
2	1	1D1831-91200	DANGER,NO FIRE		1						
3	1	1N1723-91010	DANGER,SNW.REMV.UNIT		3						
4	1	1N1723-91030	DANGER,BACKING		1						
5	1	1N1723-91100	WARNING,SCATTERINGS		1						
6	1	1N1723-91120	WARNING,EMER.STOP SW		1						
7	1	1N1723-91110	WARNING,SHOOTER		1						
8	1	1N1723-91160	WARNING,TRAVEL.DIR.		1						
9	1	1N1723-91140	WARNING,EXH.GAS SIDE		1						
10	1	1E5120-86720	LABEL, CAUTION		1						
11	1	1E8500-97460	LABEL, ENGINE STOP		1						
12	1	1E8500-97470	LABEL, CAUTION		2						
13	1	1N1723-91300	CAUTION.OP.MANUAL		1						
14	1	1N1723-91310	CAUTION.QCK.STRT.HST		1						
15	1	1E8500-97220	LABEL, RADIATOR		1						



## Parts No. Index

Parts No.	Fig. No.	Ref. No.
123482-91291	8	18
192154-25310	6	70 A
1C6290-11181	6	70 P
1D1831-91200	11	2
1E5120-86720	11	10
1E8135-56350	6	70 J
1E8500-97220	11	15
1E8500-97460	11	11
1E8500-97470	11	12
1N1599-16030	9	36
1N1599-16040	9	35
1N1600-70040	3	12
1N1600-70180	9	38
1N1600-70260	6	36
1N1600-70310	2	10
1N1600-70450	6	35
1N1600-70510	2	17
1N1600-70600	1	11
1N1600-70960	5	30
1N1600-71270	2	8
1N1600-71590	4	73
		73 -1
		73 -2
1N1600-72000	5	64
1N1600-72040	5	65
1N1600-72090	5	66
1N1600-72110	5	67
1N1600-72160	4	70
	9	72
	12	71
1N1600-72230	9	71
1N1600-72960	5	34
1N1600-73500	6	39
1N1600-73590	5	33
		41 -1
1N1600-74140	7	30
1N1600-74250	2	43
		43 -1
1N1600-74330	1	27
	6	41
1N1600-74340	6	45
1N1600-74430	1	44
		44 -1
	3	26
1N1600-74450	1	35
1N1600-74460	1	36
1N1600-74470	1	37
1N1600-74520	6	54
1N1600-74540	2	28
	3	18

Parts No.	Fig. No.	Ref. No.
1N1600-74560	3	24
1N1600-74580	9	63
1N1600-74610	4	57
	5	41
	8	44
1N1600-74620	4	59
1N1600-74650	5	32
1N1600-74660	6	40
1N1600-74730	6	37
1N1600-74740	6	50
1N1600-74750	1	42
1N1600-74760	1	45
		45 -1
1N1600-74790	9	45
1N1600-74840	4	61
1N1600-74850	4	50
	9	56
1N1600-74890	2	28 -1
	3	19 -1
1N1600-74910	1	34
1N1600-75020	6	44
1N1600-75120	1	28
	4	45
		45 -1
	7	29
	12	56
1N1600-75140	1	29
1N1600-75150	4	76
	12	75
1N1600-75180	5	35
1N1600-75200	5	36
1N1600-75240	7	32
	8	37
1N1600-75270	6	48
1N1600-75280	2	20
1N1600-75360	6	46
		90
1N1600-75410	8	30
1N1600-75420	8	31
1N1600-75430	8	33
1N1600-75450	4	44
	12	55
1N1600-75500	6	47
1N1600-75540	2	35
1N1600-75790	7	33
1N1600-77040	6	37 -1
1N1600-77090	9	46
1N1600-77140	4	42
	12	53
1N1600-77150	4	77

Parts No.	Fig. No.	Ref. No.
1N1600-77160	4	47
1N1600-77170	4	74
1N1600-77180	4	75
1N1600-77200	4	2
1N1600-77210	1	26
		75
	4	43
	8	35
	12	54
1N1600-77240	4	28
1N1600-77250	9	44
1N1600-77260	7	48
		48 -1
	9	47
1N1600-77270	9	48
1N1600-77280	3	19
1N1600-77290	3	20
1N1600-77300	9	49
1N1600-77310	6	42
		42 -1
1N1600-77320	6	43
1N1600-77330	6	49
1N1600-77340	8	38
1N1600-77370	9	50
1N1600-77380	9	51
1N1600-77390	9	52
1N1600-77410	9	53
1N1600-77420	9	54
1N1600-77450	1	30
1N1600-77490	9	55
1N1600-77520	6	28 E
		67
1N1600-77530	1	31
1N1600-77540	3	8
1N1600-77550	3	21
1N1600-77560	6	23
1N1600-77570	6	25
1N1600-77580	6	26
1N1600-77590	6	38
1N1600-77600	4	18
1N1600-77610	4	24
1N1600-77620	4	30
1N1600-77630	4	41
	12	52
1N1600-77640	5	16
1N1600-77650	5	37
1N1600-77660	2	19
1N1600-77670	7	31
1N1600-77680	8	32
1N1600-77690	8	36

Parts No.	Fig. No.	Ref. No.
1N1600-77700	8	39
1N1600-77710	8	40
1N1600-77720	9	57
1N1600-77730	5	62
1N1600-77790	6	1 -1
1N1600-78060	6	80
1N1600-78300	3	20 -1
1N1600-78370	2	44
1N1600-78380	1	68
1N1600-78390	11	1
1N1600-78400	1	69
1N1600-78410	1	70
1N1600-78420	1	71
1N1600-78430	1	73
1N1600-78440	2	20 -1
1N1600-78450	6	83
1N1600-78460	6	84
1N1600-78470	6	85
1N1600-78480	6	86
1N1600-78490	6	87
1N1600-78700	1	74
1N1600-78890	5	43 -1
1N1600-78920	5	72
1N1600-79300	5	35 -1
1N1600-79320	5	36 -1
1N1600-79550	12	74
1N1600-80570	5	34 -1
1N1600-80580	9	54 -1
1N1600-80600	10	36
1N1600-80670	2	17 -1
1N1600-81430	12	42
1N1600-81440	12	41
		85
1N1600-81450	12	47
1N1600-81460	12	44
1N1600-81470	12	73
1N1600-81480	12	88
1N1600-81490	12	43
1N1600-81520	6	1 A
1N1600-81590	7	51
1N1600-81710	1	70 -1
1N1600-81720	1	71 -1
1N1600-81730	6	87 -1
1N1600-81780	6	28 -1
1N1600-81790	6	28 C
1N1600-81800	6	28 F
1N1610-70010	3	13
1N1610-70020	5	8
1N1610-70030	5	9
1N1610-70040	5	11

## Parts No. Index

Parts No.	Fig. No.	Ref. No.
1N1610-70070	5	13
1N1610-70130	4	27
1N1610-70131	4	27 -1
		27 -2
	12	25
1N1610-70210	5	14
1N1610-70220	5	15
1N1619-16010	2	41
1N1625-19010	6	19
1N1625-19020	6	22
1N1626-72001	6	82
1N1630-29041	1	12
1N1630-70090	4	10
	12	8
1N1630-70100	4	11
	12	9
1N1630-81000	4	3
1N1632-13001	3	3
1N1632-15000	3	5
1N1632-19010	3	6
1N1632-19020	3	7
1N1632-69020	3	11
1N1633-19040	5	10
1N1633-29050	5	20
1N1633-49020	5	23
1N1635-19010	6	18
1N1636-59010	2	40
1N1637-83001	10	23
1N1639-16010	3	16
1N1639-16020	3	17
1N1639-19020	3	14
1N1639-19040	3	15
1N1639-19190	2	9
1N1639-19260	5	31
1N1672-14000	3	3 -1
1N1672-61000	3	9
1N1673-19110	5	7
1N1673-21000	4	8
	12	6
1N1673-22000	4	9
	12	7
1N1673-39010	4	19
	12	17
1N1673-39030	4	22
	12	20
1N1675-00040	6	14
1N1675-00050	6	15
1N1675-19020	6	21
1N1677-59111	8	7
1N1677-59120	7	23

Parts No.	Fig. No.	Ref. No.
1N1678-32000	8	21
1N1678-35000	4	33
	12	29
1N1678-36000	4	34
	7	27
1N1678-36100	4	35
	7	28
1N1678-41000	8	23
1N1679-16010	3	16 -1
1N1679-16020	3	17 -1
1N1679-18260	10	9
1N1683-19010	4	7
1N1687-71000	7	24
1N1688-31000	8	16
1N1688-31001	8	16 -1
1N1689-17030	7	19
1N1689-17040	7	20
1N1689-17050	7	21
1N1689-18040	10	2
1N1723-91010	11	3
1N1723-91030	11	4
1N1723-91100	11	5
1N1723-91110	11	7
1N1723-91120	11	6
1N1723-91140	11	9
1N1723-91160	11	8
1N1723-91300	11	13
1N1723-91310	11	14
1N1763-19060	5	12
1N1763-29020	5	17
1N1763-29030	5	18
1N1763-29040	5	19
1N1763-29050	5	21
1N1763-29070	5	71
1N1763-39010	4	20
1N1767-59020	4	88
1N1803-99010	4	25
	12	23
1N1803-99020	4	26
	12	24
1N1808-31000	4	32
	12	28
1N1830-26000	1	7
1N1830-26001	1	65
1N1830-27001	1	8
1N1830-29021	1	10
1N1830-39010	1	13
1N1833-34000	4	15
1N1833-39020	4	21
1N1833-39030	4	23

Parts No.	Fig. No.	Ref. No.
1N1833-39030	9	31
1N1837-99030	10	18
1N1838-41000	1	23
1N1863-55000	5	26
1N1865-19010	6	20
1N1867-37000	9	6
1N1867-99010	10	10
1N1868-31000	8	17
1N1869-18060	10	21
1N1869-18090	10	3
1N1889-19010	2	9 -1
1N1937-99070	10	13
1N1937-99100	10	19
1N1937-99120	10	20
1N1938-31000	8	19
1N1938-74000	1	24
1N1938-75000	1	25
1N1953-12000	5	1
1N1953-14000	5	2
1N1953-19010	4	4
	12	2
1N1953-19020	4	6
	12	4
1N1953-19030	5	3
1N1953-19040	5	4
1N1953-19050	5	5
1N1953-19060	5	6
1N3066-71000	6	24
		24 -1
1N3067-59910	9	32
1N3068-39010	9	39
1N3068-39020	9	40
1N3073-19010	4	5
1N3073-32000	4	13
1N3073-33001	4	12
1N3073-34000	4	14
1N3073-35000	4	16
1N3073-36000	4	17
1N3073-61000	5	27
1N3073-62000	5	29
1N3075-12000	6	17
1N3077-11000	8	1
1N3077-22000	8	2
1N3077-23000	8	3
1N3077-26000	8	4
1N3077-39050	9	9
1N3077-59040	9	27
1N3077-62000	8	8
1N3077-63000	8	9
1N3077-69020	9	33

Parts No.	Fig. No.	Ref. No.
1N3077-69020	9	33 -1
1N3077-69030	9	41
1N3077-69040	9	42
1N3077-69060	9	43
1N3077-69090	8	10
1N3077-69130	8	11
1N3077-69140	8	12
1N3077-69150	4	79
		79 -1
1N3077-99050	10	7
1N3077-99060	10	8
1N3078-11000	4	31
	12	27
1N3078-19011	9	37
1N3078-42000	4	36
1N3078-49010	4	37
1N3078-49020	4	38
1N3079-16010	9	34
1N3106-59010	2	38 -1
		38 -2
1N3130-52510	6	70 B
1N3130-56260	6	70 H
1N3130-56510	6	70 K
1N3130-56710	6	70 Q
1N3130-56751	6	70 R
1N3150-21000	1	1
1N3150-22000	1	2
1N3150-23000	1	3
1N3150-23001	1	3 -1
1N3150-24000	1	4
1N3150-25000	1	5
1N3150-26000	1	6
1N3150-28000	1	58
1N3150-29000	1	56
1N3150-29010	1	9
1N3150-29011	1	66
1N3150-29020	1	59
1N3150-29021	1	59 -1
1N3150-29030	1	57
1N3150-29040	1	67
1N3150-31000	1	65 -1
1N3150-39010	1	14
1N3150-39020	1	15
1N3150-39030	1	16
1N3150-39040	1	17
1N3150-39050	1	18
1N3151-61000	6	1
1N3151-69020	6	2
1N3151-69030	6	3
1N3151-69040	6	4

## Parts No. Index

Parts No.	Fig. No.	Ref. No.
1N3151-69050	6	5
1N3151-69060	6	6
1N3151-69070	6	7
1N3151-69080	6	8
1N3151-69090	6	9
1N3151-69100	6	10
1N3151-69110	6	11
1N3151-69140	6	11 -1
1N3151-69160	6	72
1N3151-69170	6	77
1N3151-69210	6	10 -1
1N3151-69220	6	76
1N3151-69230	6	71
1N3151-69240	6	78
		78 -1
1N3151-69250	6	79
1N3151-79010	6	12
1N3152-11000	3	1
1N3152-12000	3	2
1N3152-13000	3	4
1N3152-69010	3	10
1N3153-11000	4	1
1N3153-12000	12	78
1N3153-29010	5	70
1N3153-32000	12	14
1N3153-39010	4	18 -1
		18 -2
1N3153-41000	12	26
1N3153-49010	5	22
1N3153-49030	12	84
1N3153-51000	5	24
1N3153-52000	5	25
1N3153-61000	5	28
1N3153-61001	5	28 -1
1N3153-81000	12	22
1N3153-89010	12	5
1N3154-11000	2	1
1N3154-12000	2	2
1N3154-13000	2	3
1N3154-19010	2	4
1N3154-19020	2	5
1N3154-81000	7	1
1N3154-82000	7	2
1N3154-82000-1	7	2 -1
1N3154-82000-2	7	2 A
1N3154-83000	7	3
1N3154-83000-1	7	3 -1
1N3154-83000-2	7	3 A
1N3154-83001	7	3 A-1
1N3154-84000	7	4

Parts No.	Fig. No.	Ref. No.
1N3154-84000-1	7	4 -1
1N3154-84000-2	7	4 A
1N3154-85000	7	5
1N3154-86000	7	6
1N3154-87000	7	7
1N3154-88000	7	8
1N3154-89000	7	9
1N3154-89010	7	10
1N3154-89010-1	7	10 -1
1N3154-89010-2	7	10 A
1N3154-89020	7	11
1N3154-89020-1	7	11 -1
1N3154-89020-2	7	11 A
1N3154-89030	7	12
1N3154-89040	7	13
1N3154-89041	7	13 -1
1N3154-89050	7	14
1N3154-89060	7	15
1N3154-89070	7	16
1N3154-91000	7	17
1N3154-92000	7	18
1N3155-00010	6	13
1N3155-00021	6	14 -1
1N3155-11000	6	16
1N3156-00011	6	28 B
1N3156-11000	2	36
1N3156-39010	6	27
1N3156-39060	5	30 -1
1N3156-41000	6	28
1N3156-41002	6	28 A
1N3156-51000	6	29
1N3156-52000	6	30
1N3156-53000	1	19
1N3156-54000	2	6
1N3156-55000	6	31
1N3156-56000	1	20
1N3156-56001	1	72
1N3156-57000	6	32
1N3156-58000	2	37
1N3156-59010	6	33
1N3156-59020	2	38
1N3156-59030	2	42
		42 -1
		42 -2
1N3156-61000	2	7
1N3156-62000	6	34
1N3156-63000	2	7 -1
1N3157-21000	8	5
1N3157-21001	8	5 -1
1N3157-22000	2	11

Parts No.	Fig. No.	Ref. No.
1N3157-23000	2	12
1N3157-29010	8	6
1N3157-29020	8	34
1N3157-31000	9	1
1N3157-32000	9	2
1N3157-33000	9	3
1N3157-34000	9	4
1N3157-35000	9	5
1N3157-39010	9	7
1N3157-39020	9	8
1N3157-39030	9	5 -1
1N3157-39040	9	4 -1
1N3157-41000	9	10
1N3157-42000	9	11
1N3157-51000	9	12
1N3157-52000	9	13
1N3157-53000	9	14
1N3157-54000	9	15
1N3157-55000	9	16
1N3157-56000	9	17
1N3157-57000	9	18
1N3157-58000	9	19
1N3157-59000	9	20
1N3157-59010	4	29
1N3157-59011	4	29 -1
		29 -2
1N3157-59020	9	21
1N3157-59030	9	22
1N3157-59040	9	23
1N3157-59050	9	24
1N3157-59060	9	25
1N3157-59070	9	26
1N3157-59080	8	27
1N3157-59110	8	7 -1
1N3157-61000	9	28
1N3157-71000	9	29
1N3157-72000	9	30
1N3157-81000	7	25
1N3157-81000-1	7	25 -1
1N3157-81000-2	7	25 A
1N3157-82000	7	26
1N3157-82000-1	7	26 -1
1N3157-82000-2	7	26 A
1N3157-83000	2	13
1N3157-99010	10	11
1N3157-99020	10	12
1N3157-99021	10	34
1N3157-99030	10	5
1N3157-99031	10	30
1N3157-99040	10	6

Parts No.	Fig. No.	Ref. No.
1N3157-99041	10	31
1N3157-99050	10	24
1N3157-99070	10	14
1N3157-99071	10	32
1N3157-99080	10	1
1N3157-99081	10	28
1N3157-99090	10	17
1N3157-99100	10	22
1N3157-99110	10	16
1N3157-99120	10	4
1N3157-99130	10	15
1N3158-11000	1	21
1N3158-12000	1	22
1N3158-19010	1	60
1N3158-19020	1	22 -1
1N3158-21000	8	13
1N3158-29020	8	14
1N3158-29030	8	15
1N3158-29040	8	28
1N3158-29041	8	28 -1
1N3158-31000	8	20
1N3158-41000	8	22
1N3158-51000	8	24
1N3158-51001	8	55
1N3158-52000	8	25
1N3158-53001	4	39
1N3158-54000	4	40
1N3158-55000	8	26
1N3158-56000	12	50
1N3158-57000	12	51
1N3158-58000	8	29
1N3158-61000	2	14
1N3158-71000	2	15
1N3158-72000	2	16
1N3158-99010	2	18
1N3159-19011	10	35
1N3159-81000	10	23 -1
1N3161-69130	6	73
1N3161-69140	6	74
1N3161-69150	6	75
1N3163-14000	4	84
1N3163-33000	12	12
1N3163-34000	12	13
1N3163-35000	12	15
1N3163-36000	12	21
1N3163-37000	12	33
1N3163-39020	12	18
1N3163-39030	12	16
1N3163-39040	12	34
1N3163-39050	12	83

## Parts No. Index

Parts No.	Fig. No.	Ref. No.
1N3163-39060	12	35
1N3163-39070	12	19
1N3163-39080	12	36
1N3163-42000	12	37
1N3163-89050	12	38
1N3163-89080	12	39
1N3164-89040	7	13 -2
1N3166-57000	2	39
1N3167-99191	10	3 -1
1N3167-99210	10	25
1N3167-99220	10	26
1N3198-21000	12	40
		76
1N3223-19030	4	85
		85 -1
	12	79
1N3223-19040	4	86
		86 -1
	12	80
1N3240-34000	1	77
1N3243-12000	12	3
1N3247-69020	9	76
1N3247-69030	9	41 -1
1N3247-69040	9	42 -1
1N3247-99110	10	29
1N3247-99120	10	27
1N3248-34000	4	34 -1
		34 -2
	7	27 -1
	12	30
1N3248-34200	4	35 -1
		35 -2
	7	28 -1
	12	31
1N3248-39010	9	75
1N3248-45000	1	25 -1
22137-050000	4	81
22137-060000	2	27
		27 -1
	4	64
		64 -1
		64 -2
	7	42
		42 -1
	8	51
	9	64
22137-080000	1	50
	4	65
		65 -1
		65 -2

Parts No.	Fig. No.	Ref. No.
22137-080000	5	49
	6	59
		59 -1
	7	22
		43
		43 -1
	8	52
		52 -1
		52 -2
	9	65
		65 -1
22137-100000	1	51
	3	27
	4	82
	5	50
	6	60
	9	78
22137-120000	9	66
22137-200000	6	61
22157-060000	12	49
22157-080000	7	48 -2
	9	47 -1
		48 -1
22157-100000	4	87
		87 -1
22190-100000	6	70 C
22217-060000	1	52
	2	29
	4	66
	7	44
	8	53
	9	67
22217-080000	1	53
	2	30
		30 -1
		30 -2
	4	67
	5	49 -1
	6	62
		62 -1
		62 -2
	9	68
22217-100000	1	54
	3	28
	5	50 -1
		51
	6	63
	9	69
22217-140000	3	31
22242-000150	6	66

Parts No.	Fig. No.	Ref. No.
22242-000170	2	31
22242-000200	2	32
		32 -1
22242-000280	5	55
22252-000350	2	33
22252-000450	5	56
22252-000520	5	57
22252-000620	5	58
22272-000060	7	47
22272-000070	1	55
22351-010045	5	54
22351-025025	4	90
		90 -1
22351-030025	4	72
22351-040025	4	88 -1
		88 -2
22351-045025	4	72 -1
		72 -2
	12	72
22351-050025	9	73
22351-060016	5	52
22351-060025	9	74
22351-060045	5	53
22372-080000	9	71 -1
22417-160100	4	80
		80 -1
22417-200120	7	45
22417-200160	4	68
22417-250160	4	69
	6	64
	7	46
		47 -1
	8	54
	9	70
	12	70
		87
22417-400320	4	71
	6	65
22550-060250	6	68
23871-010000	6	70 L
24101-060054	5	59
24101-062054	5	60
24101-062074	5	61
24104-060034	2	34
24104-060044	3	29
24104-060054	3	30
24104-063054	5	63
24311-000240	6	69
24315-000080	6	70 F
24321-000650	6	70 M

Parts No.	Fig. No.	Ref. No.
24372-000080	6	70 G
24421-153507	6	70 D
24421-254008	5	68
24421-355511	5	69
26013-050162	4	83 -1
		83 -2
	8	46 -1
26013-050164	4	83
26013-060102	6	52
26013-060124	4	51
26013-060164	1	38
	2	21
	4	52
	7	34
	8	42
	9	58
26013-060202	1	39
26013-080124	4	53
	7	35
26013-080164	1	40
	4	54
	7	36
	8	43
26013-080182	4	55
26013-080204	1	41
	2	22
		22 -1
	4	56
	5	40
	6	53
		53 -1
	7	37
		37 -1
26013-080252	1	62 -2
26013-080254	7	50
26013-080304	5	42
26013-080704	6	55
26013-100202	2	23 -1
	8	45 -1
26013-100204	2	23
	8	45
26013-100252	1	43
	2	24
	4	58 -1
		58 -2
	5	43
	6	56 -1
	7	38 -1
	12	66
26013-100254	4	58



# Parts No. Index

Parts No.	Fig. No.	Ref. No.
26013-100254	6	56
	7	38
26013-100302	3	23
26013-100304	5	44
26013-100552	3	24 -1
26013-120252	3	25 -1
		26 -1
26013-120254	3	25
26013-120302	5	45 -1
26013-120304	5	45
26016-080352	6	70 N
26016-080602	6	70 S
26022-050162	4	60
	8	46
26022-060162	7	39
26022-060302	8	47
26027-100102	5	38
26106-060102	6	52 -1
26106-060122	1	38 -1
	4	51 -1
		51 -2
	12	45
		60
26106-060162	1	39 -1
		76 -1
		78
	2	21 -1
	4	46 -1
		46 -2
		52 -1
		52 -2
	7	34 -1
		39 -1
	8	42 -1
	9	58 -1
	12	46
		89
26106-060202	1	32 -1
	8	41 -2
26106-060252	8	47 -1
26106-060352	4	47 -1
		47 -2
26106-080122	4	53 -1
		53 -2
		55 -1
		55 -2
	7	35 -1
	12	61
		63
26106-080162	1	40 -1

Parts No.	Fig. No.	Ref. No.
26106-080162	4	54 -1
		54 -2
	6	54 -1
		88
	7	36 -1
	8	43 -1
	12	62
		86
26106-080202	1	33 -1
		41 -1
		42 -2
	2	22 -2
	4	56 -1
		56 -2
	5	40 -1
	6	50 -1
		53 -2
		81 -1
	7	37 -2
	12	64
		65
26106-080252	1	42 -1
		61 -1
		62 -1
		63 -1
	4	50 -1
		50 -2
		57 -1
		57 -2
	7	50 -1
	8	44 -1
	9	56 -1
	12	59
26106-080302	1	64 -1
26106-080702	1	35 -1
	6	55 -1
26106-100162	6	70 E
26116-080162	4	48 -1
		48 -2
	12	57
26116-080202	4	49
	12	58
26116-080252	1	62
		63
26116-080302	1	64
26116-080404	1	34 -1
26116-100202	3	22 -1
26116-100352	5	39 -2
26116-100402	5	39 -1
26117-060162	1	76

Parts No.	Fig. No.	Ref. No.
26117-060162	4	46
	8	41
26117-060202	1	32
	8	41 -1
26117-080162	4	48
26117-080202	1	33
	6	81
26117-080252	1	61
26117-100202	3	22
26117-100302	5	39
26117-100502	6	51
26136-100502	6	51 -1
26136-120452	4	59 -1
		59 -2
	12	67
26207-080254	5	42 -1
26207-100102	5	73
26207-100162	5	38 -1
		38 -2
26207-100304	5	44 -1
26366-080002	4	78
26367-060002	1	47 -1
		79
	4	62 -1
		62 -2
	7	41 -1
	8	49 -1
	9	59 -1
	12	48
26367-080002	1	48 -1
	2	45
	4	78 -1
		78 -2
	6	57 -2
		89
	9	77
	12	77
		82
26377-100002	6	58 -1
26377-120002	4	89
		89 -1
	12	81
26557-040122	1	46
26557-050302	7	40
26607-080002	2	26
26707-050002	7	49
26707-060002	1	47
	2	25
	4	62
	7	41

Parts No.	Fig. No.	Ref. No.
26707-060002	8	49
	9	59
26707-080002	5	46
26707-100002	5	47
26707-140002	3	32
	9	60
26717-040002	8	48
26717-080002	1	48
	2	26 -1
		26 -2
	4	63
		63 -1
		63 -2
	6	28 D
		57
		57 -1
	8	50
	9	61
		61 -1
		61 -2
	12	69
26717-100002	1	49
	5	48
		48 -1
	6	58
	8	50 -1
	9	62
26717-120002	9	63 -1
26737-120002	4	61 -1
		61 -2
	12	68
7N3073-32000	4	13 A
	12	11
7N3073-33000	4	12 A
7N3130-50010	6	70
7N3153-11000	4	1 A
7N3153-11001	4	1 A-1
		1 A-2
7N3153-11002	12	1
7N3153-31000	12	10
7N3154-81000	7	1 A
7N3154-91000	7	17 A
7N3154-92000	7	18 A
7N3157-21000	8	5 A
7N3157-99010	10	33
7N3163-00010	12	32